

2 Alexandra Street, Stone

£170,000 Freehold



Pretty courtyard which is the perfect space to sit out in the summer months. • Perfect for first time buyers and investors • This end of terrace property features two double bedrooms and a modern bathroom with walk-in shower. • A lovely period property located just a stone's throw from the town centre! • Open plan lounge/dining room along with separate kitchen, ground floor W/C and utility room.



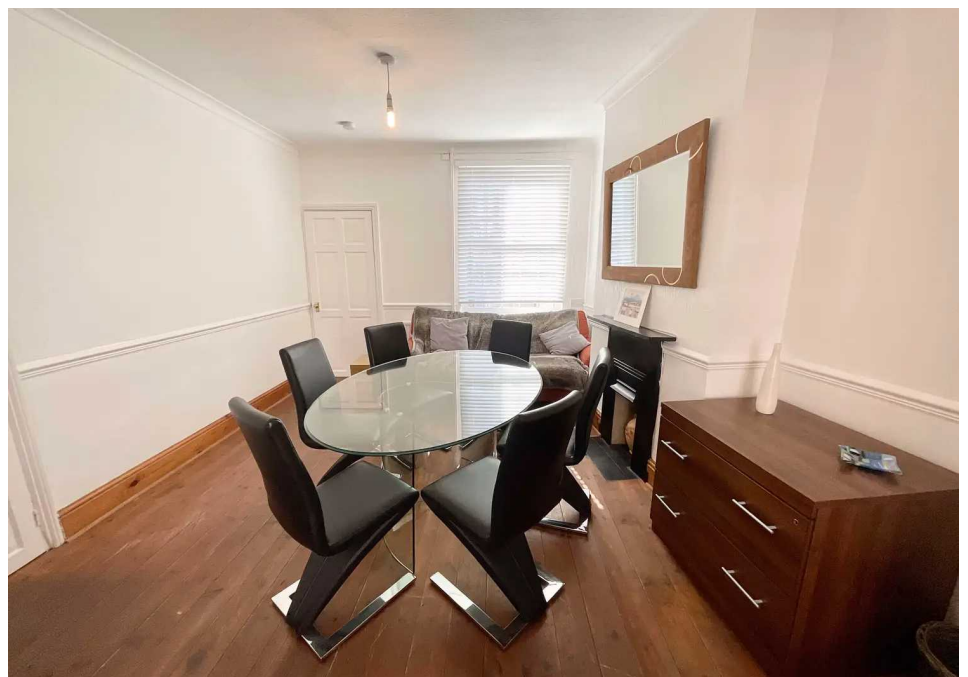
Roll up, roll up! Are you feeling lucky? Do you fancy your chances at a great opportunity? Well here it is, but not for long so be quick! A fantastic two bedroom end terrace property located in the heart of Stone with everything you need right on the door step. Bursting with lots of character including high ceilings and original fireplaces, this period property is a real gem! The entrance hall features original tiled flooring and leads through into an open plan lounge/diner which is the perfect space for entertaining guests. Beyond this is a lovely kitchen complete with convenient ground floor W/C and handy utility room at the rear perfect for tucking away the laundry! Upstairs, there are two generous double bedrooms and a stylish contemporary bathroom with large walk in shower. Externally, the property has a lovely courtyard area which is a great space for sitting out in summer months. This brilliant period property is a great opportunity for first time buyers, investors or those looking to downsize whilst not having to compromise on a superb location. Contact our Stone office to arrange your viewing today.



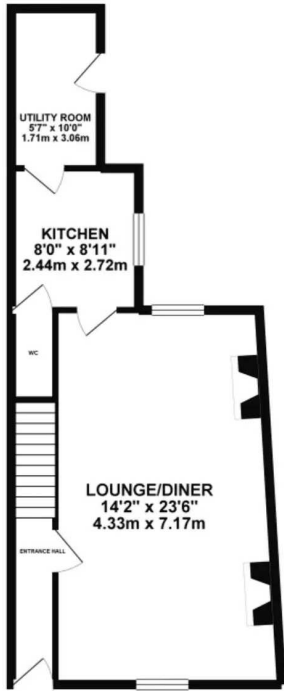
Fantastic 2 bed end terrace in central Stone with original features such as high ceilings and fireplaces. Open lounge/diner, kitchen, utility room, courtyard, 2 double bedrooms, contemporary bathroom. Ideal for first-time buyers, investors, downsizers. Contact our Stone office now!
Tenure: Freehold

EPC Energy Efficiency Rating: E

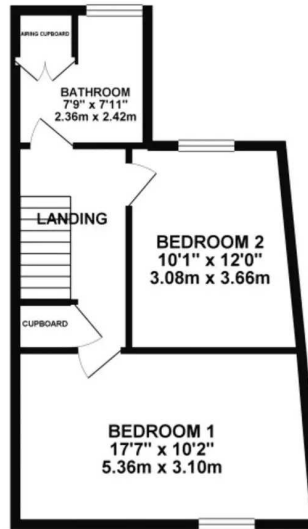
EPC Environmental Impact Rating: F



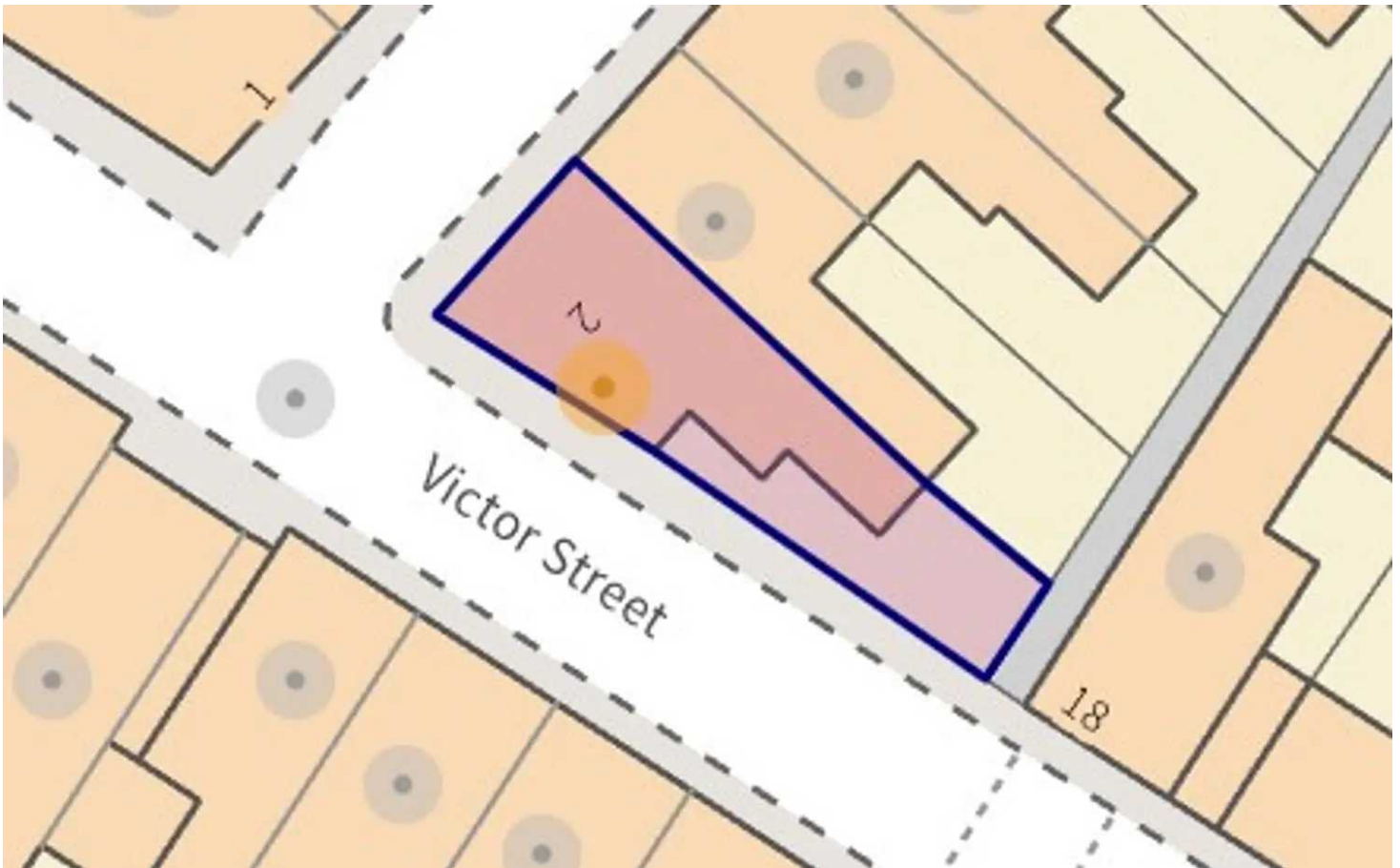
GROUND FLOOR



1ST FLOOR



While every effort has been made to ensure the accuracy of the floorplan (based on measurements of doors, windows, rooms and any other levels are approximate and no responsibility is taken for any error or omission in this document. This plan is for guidance purposes only and should be used as such by any prospective purchaser. The services, systems and appliances shown have not been tested and no guarantee as to their suitability or efficiency can be given.
Made with MyPlan 02/23



You can include any text here. The text can be modified upon generating your brochure.