

13 Birkholme Drive, Meir Heath

£289,950 Freehold



Sought after location close to excellent local schooling and with easy access to major commuter links and local amenities. • Beautiful two bedroom bungalow situated in Meir Heath with plenty to offer you! • Two double bedrooms along with a superb bathroom featuring a shower over the bath. • Two generous reception rooms including a formal dining room and a stunning lounge to the front with walk in bay window. • Sitting on a generous plot offering ample driveway to the front and a large garden to the rear along with a detached garage too.



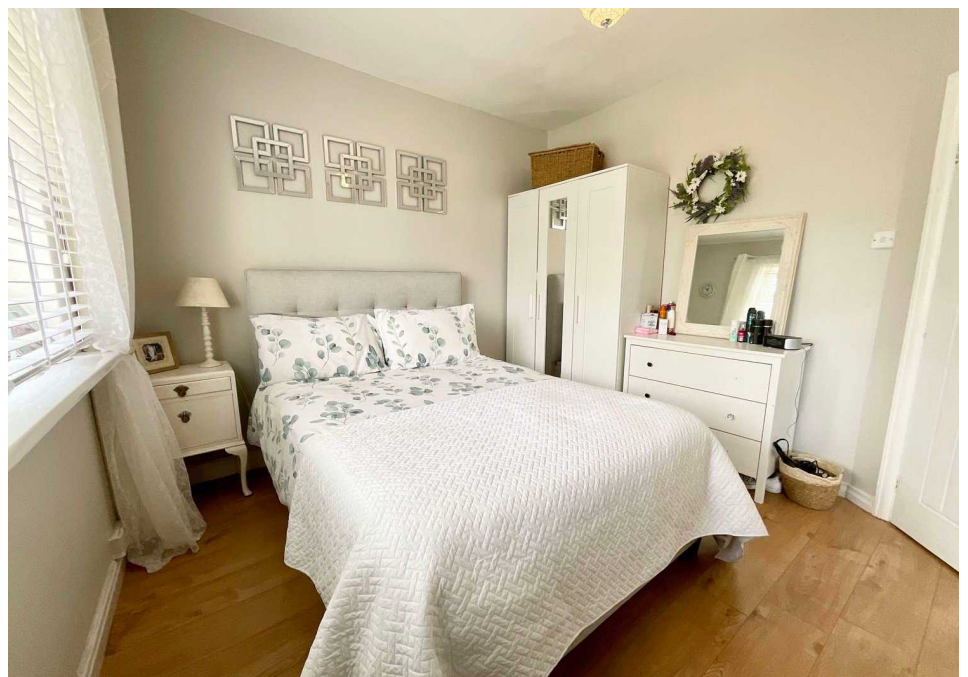
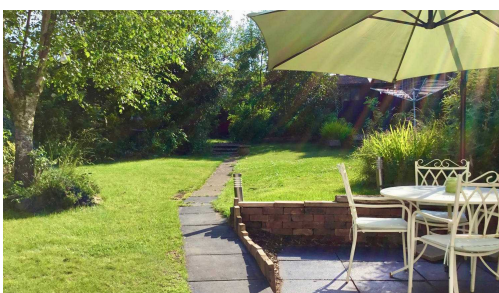
"Life is a mystery, Everyone must stand alone, I hear you call my name, And it feels like home" Prepare to feel right at home as this stunning two bedroom bungalow is calling out to you... don't ignore the signs because your prayers and dreams have been answered. Situated on Birkholme Drive in the sought after Meir Heath area this wonderful bungalow is sure to tick all the right boxes. The property begins with a handy front porch leading through into a welcoming entrance hall featuring a useful storage cupboard. Off the hall are two double bedrooms along with a superb bathroom with a shower over the bath. There are two reception rooms including a bright and airy front lounge with walk in bay window as well as a formal dining room that is great for entertaining guests. Off the dining room is the kitchen which boasts a set of French doors opening out onto the patio along with a very convenient utility area which is perfect for tucking the laundry away. Externally, this property does not disappoint having a generous driveway that provides ample parking and then a large rear garden with plenty of space to sit out as well as a detached garage too. This bungalow is no mystery but certainly is something that you don't want to miss out on. Contact our Stone office to arrange your viewing today!



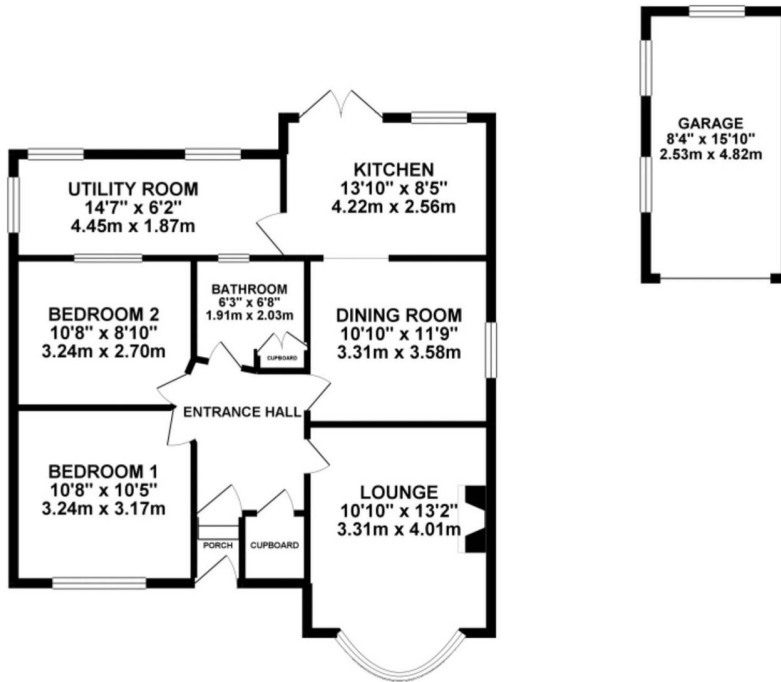
Charming 2-bed bungalow in sought-after Meir Heath area. Features 2 reception rooms, spacious kitchen with French doors, generous driveway, large rear garden, and detached garage. Book your viewing now! Tenure: Freehold

EPC Energy Efficiency Rating: D

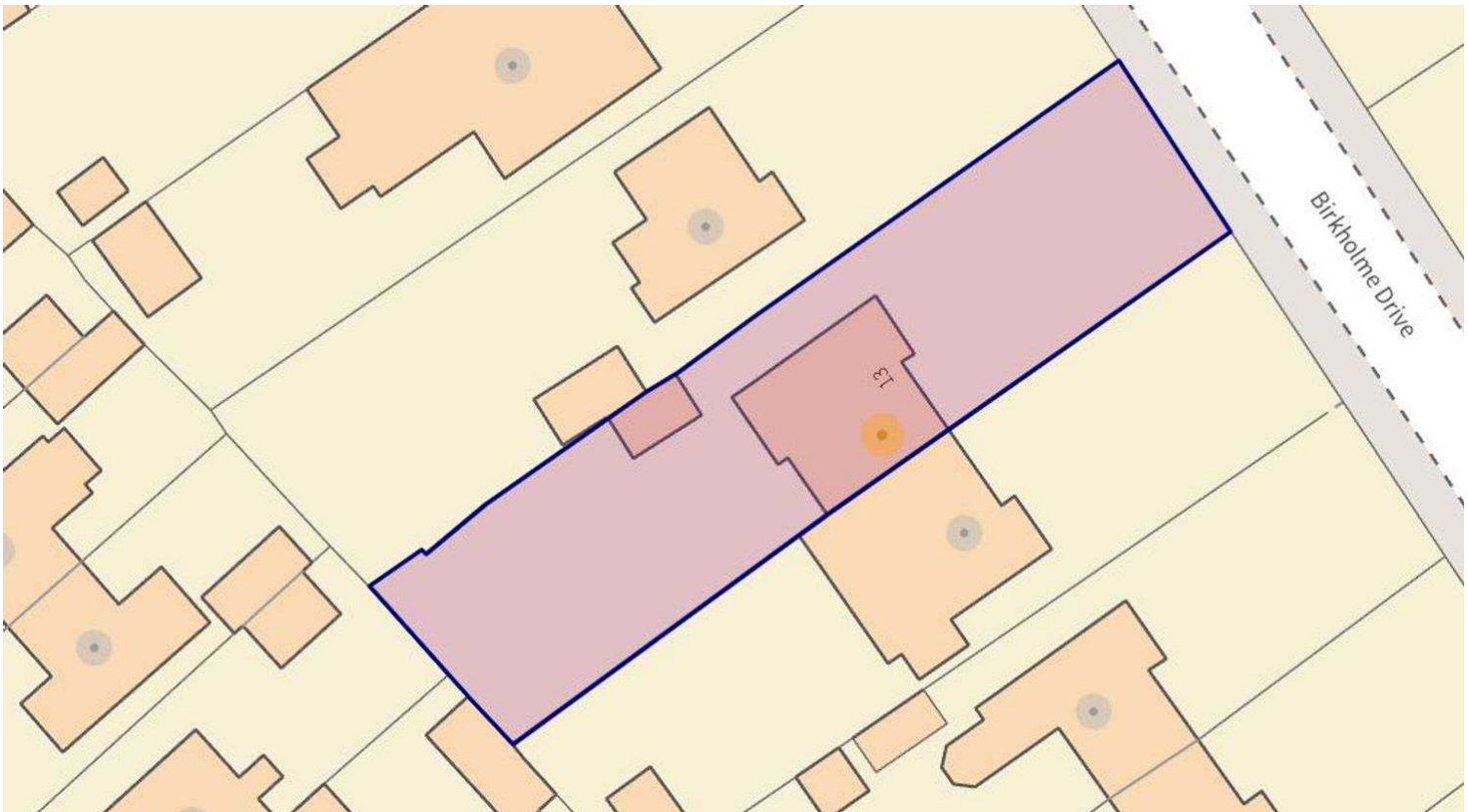
EPC Environmental Impact Rating: C



GROUND FLOOR



Whilst every effort has been made to ensure the accuracy of the floorplan contained here, measurements of doors, windows, rooms and any other items are approximate and no responsibility is taken for any error or omission in this statement. This plan is for illustrative purposes only and should be used in conjunction with any prospective purchaser. The services, systems and appliances shown here have not been tested and no guarantee is given for their operability or efficiency and no guarantee is given.
Made with HARPIN ©2023



You can include any text here. The text can be modified upon generating your brochure.

01785 814917