

Apt 28, Joules Place Stafford Street, Market Drayton



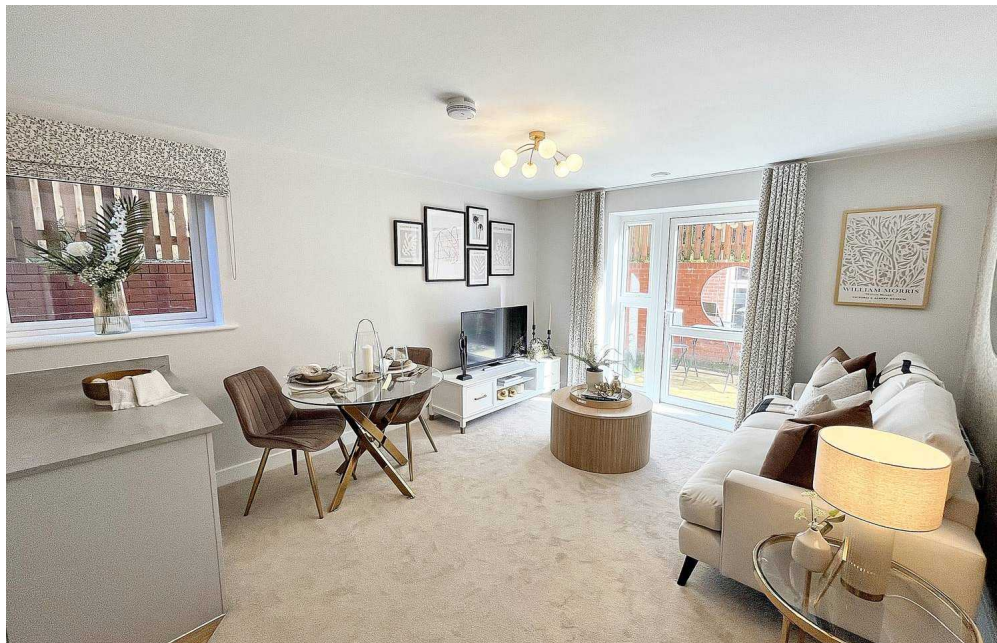
£169,950 Leasehold

Modern fitted kitchens with integrated appliances and white suite high quality fitted wet rooms • One bedroom retirement apartment offering modern living ideally located close to the centre of picturesque Market Drayton • Designed specifically for over 60's with dedicated manager onsite during office hours • A range of amenities close by including markets, restaurants, shops and canal-side walks • Stunning communal areas including residents lounge and beautiful landscaped courtyard gardens

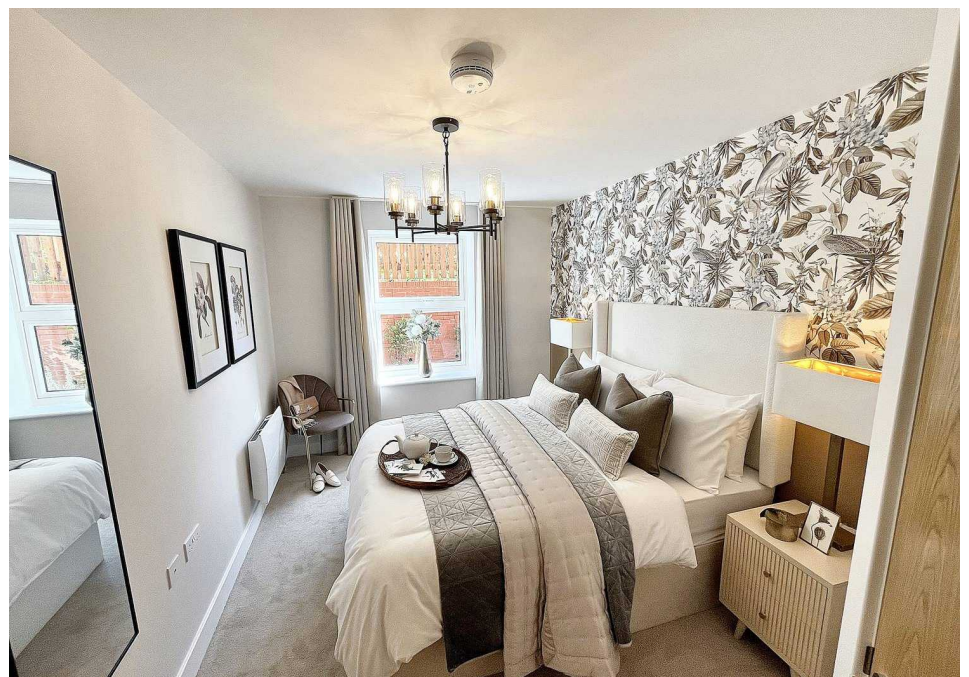
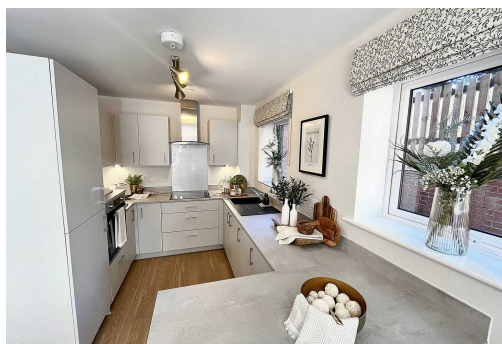


Think of a lifestyle stripped of all those annoying time consuming chores. That's McCarthy & Stone Retirement Living. You can enjoy independence with your own front door, in an environment that offers companionship, privacy and security. There are facilities such as the lounge for socialising with other homeowners, as well as beautiful landscaped gardens for everyone to enjoy. And, when you have your friends or relatives over, there's a convenient guest suite available. Joules Place is situated on Stafford Street in the historic town of Market Drayton, and is a superb Retirement Living development designed for the over 60's. The development offers both one and two bedroom apartments for sale split over three floors with lift access, they are finished to a high specification and consist of entrance hallway, spacious walk in storage cupboard, good sized living/dining room, fitted kitchen with built in appliances, one bedroom with a walk in wardrobe and a large wet room. Further features include camera entry system that work on the TV in your apartment, intruder alarms, fire detection equipment and 24 hour state-of-the-art emergency call system so you can be sure that the safety and security of homeowners is really taken care of. The development is run by a dedicated House Manager who is on site during office hours, so complete peace of mind is guaranteed. As well as being on hand to offer help, support and advise to homeowners, the House Manager takes care of the external maintenance, gardening and landscaping. It's much more than an apartment - it really is life made easy.

Market Drayton is a historic market town in North Shropshire, close to the Welsh and Staffordshire borders. Joules Place Retirement Living development is in a central location, with all local amenities practically on the doorstep. It's only 0.2 miles away from the centre of the town, which is accessed via a gently sloping and pedestrian friendly walk along Stafford Street. The streets of Market Drayton have a lot of historic character, with a mix of half-timbered, Georgian and Victorian buildings. The town has also retained its heritage, and the Buttercross market shelter, a stone portico in the centre of the town, is filled with popular market stalls on Wednesdays. The centre also offers a variety of local amenities, including an Asda and Morrisons supermarket, a medical centre, local shops, a library, a post office, a pharmacy and several banks. Away from the town centre, it's also easy to get out and explore. The town sits next to the Shropshire Union Canal, where you can enjoy a number of picturesque walks on the canal towpaths. In the wider area, there are also a number of beautiful gardens like Wollerton Old Hall and the Dorothy Clive Garden, as well as heritage



Think of a lifestyle stripped of all those annoying time consuming chores. That's McCarthy & Stone Retirement Living. You can enjoy independence...
Tenure: Leasehold





You can include any text here. The text can be modified upon generating your brochure.