

## The Ash, Trentham Fields, New Inn Lane, Trentham

£584,995



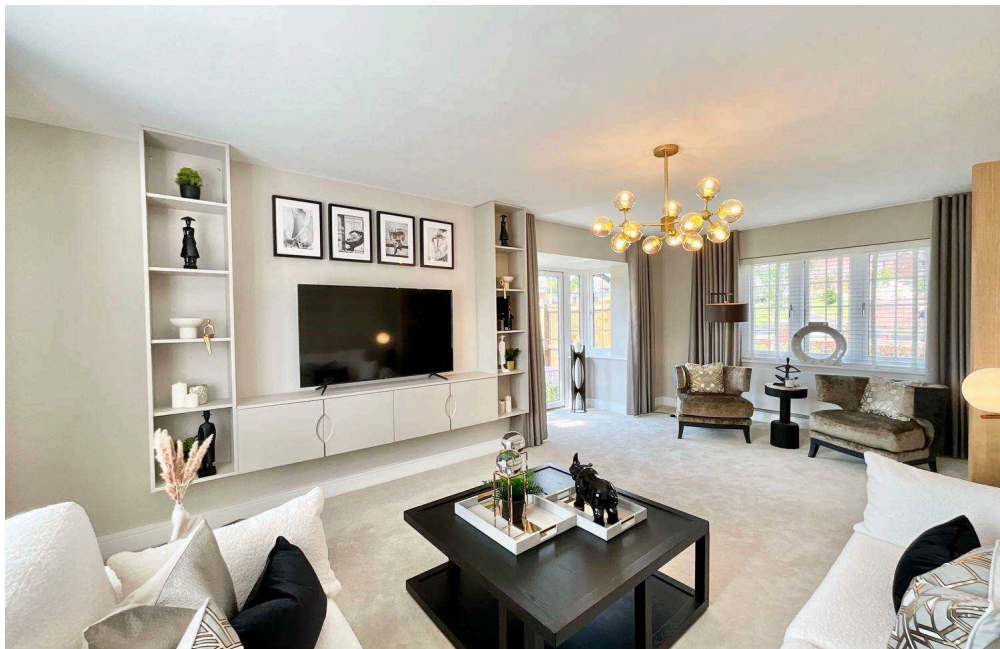
Innovative technology used throughout the property including underfloor heating to the ground floor, wifi kitchen appliances, car charging point and speedy wifi as standard • Set on a unique development where sustainable living and modern technology become one to future proof your home for years to come within a sustainable environment • A detached double garage sits to the side of the property providing further storage space and parking should you require it • Five spacious bedrooms and three bathrooms occupy the first floor whilst two separate reception rooms and a spacious kitchen diner with separate utility room make the ground floor complete • All of this sat on a large garden plot with space to the front, side and rear providing and abundance of private outdoor space to combine with the public spaces within the development



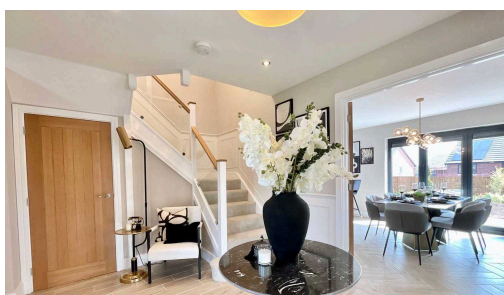
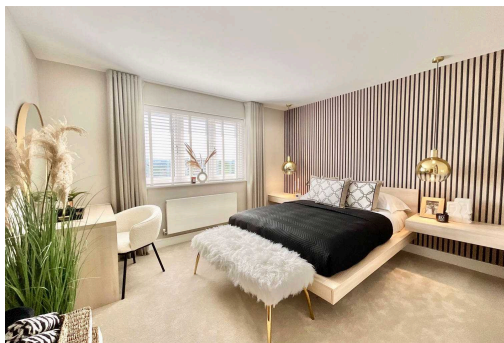


The Ash is a beautifully designed, five bedroom, detached family home with detached double garage set within the sensational Trentham Fields development where convenience and conservation have become one. Set over two floors, the ground floor lends itself to modern day living perfectly with a large kitchen with space for dining fitted with a range of base and wall units along with WiFi appliances as standard with bi-folding doors opening out into the garden. There are two further reception rooms to use as you wish whether that be separate living spaces for adults and children or the smaller of the two used as a space to work from home. The utility room accessed from the kitchen and guest WC from the main entrance hallway makes the ground floor complete. Up on the first floor there are four double bedrooms and fifth large single room making the perfect nursery or home office should that suit your needs better. The main bedroom has an en-suite shower room and fitted wardrobes whilst bedroom two also benefits from an en-suite shower room. The family bathroom with both bath tub and separate shower cubicle completes the first floor. Outside, there is a driveway and detached double garage along with extensive garden to both the front and rear with access all around the property. Beyond your private garden, you have access to all that this stunning development has to offer in regards to open spaces, out door play spaces and gym equipment or nature walks through the woodland and around the ponds. This is the perfect family home with all of the space and versatility both inside and out that a family could need along with a fantastic specification as standard to include features such as underfloor heating to the ground floor, carpets throughout, cottage oak with solid core internal doors, photovoltaic panels, fibre internet connection and a huge choice of fixtures and fittings within the kitchens and bathrooms to make it just right for you. The Ash truly is a house to make your home. Get in touch with us today to arrange your appointment to take the next step into making this house your home.





The Ash is a beautifully designed, five bedroom, detached family home with detached double garage set within the sensational Trentham Fields developme...  
Council Tax band: TBD



**Lounge with bay:**

4.50m x 6.40m / 14' 9" x 21'

**Lounge without bay:**

3.82m x 6.40m / 12' 7" x 21'

**Family room:**

4.26m x 3.68m / 14' x 12' 1"

**Kitchen/Dining:**

6.40m x 3.54m / 21' x 11' 7"

**Utility:**

1.62m x 2.85m / 5' 4" x 9' 4"

**W.C:**

1.50m x 1.05m / 4' 11" x 3' 5"

**Principal bedroom:**

3.66m x 4.27m / 12' x 14'

**En-suite:**

1.62m x 2.47m / 5' 4" x 8' 1"

**Bedroom 2:**

3.49m x 3.54m / 11' 6" x 11' 7"

**En-suite 2:**

1.62m x 1.80m / 5' 4" x 5' 11"

**Bedroom 3:**

3.74m x 3.21m / 12' 3" x 10' 6"

**Bedroom 4:**

2.62m x 3.08m / 8' 7" x 10' 1"

**Bedroom 5:**

2.88m x 2.49m / 9' 5" x 8' 2"

**Bathroom:**

2.78m x 1.93m / 9' 1" x 6' 4"

You can include any text here. The text can be modified upon generating your brochure.