

## 1 The Avenue, Stone

£200,000 Leasehold



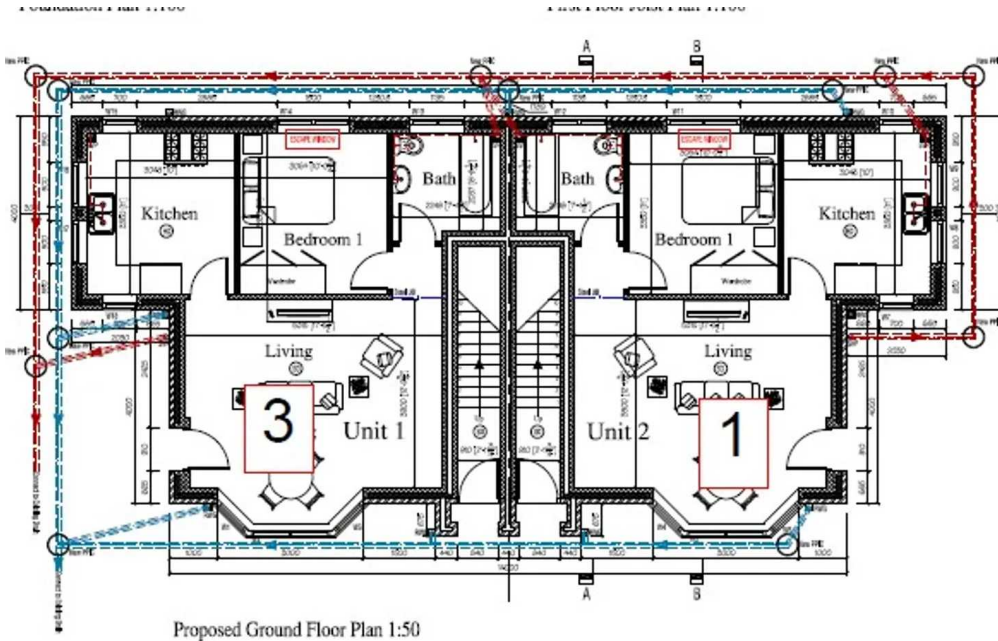
Small, select brand new development of only 4 luxury apartments strolling distance to town. • Situated on the ground floor, this apartment offers a perfect downsize, and ideal base for great commuter links • Apartment living with it's own front door, and private parking space • Stone offers pretty parks, a great community feel and lovely walks as well as fantastic road and rail commuter links. • Accommodation including a lovely living room with bay window, stylish kitchen and good size rooms throughout





AVAILABLE MAY 2024!

With a gentle Viennese Waltz from your front door into town, to a tango down the high street to pick up the essentials, a quickstep in for some refreshments, and then a Cha-Cha-Cha back home, we can safely say that Strictly is rivalling Kirstie & Phil for Location, Location, Location! Due for build completion Spring 2024, this brand new, small and select development is on one of the most prestigious streets in Stone, and this fabulous ground floor apartment will provide a superb base, perfect downsize and the ideal way to enjoy all that the lovely town has to offer, even if you can only enjoy Strictly from the comfort of your chair this apartment is perfect being fully accessible, for those with mobility needs. With it's own front door, and a spacious living room with walk in bay window, there is a stylish and well equipped Kutschenhaus kitchen with integrated dishwasher, fridge freezer, oven, induction hob and washing machine, a good size bedroom and wonderful shower room and outside you have your own private parking (NB. The apartments are wired to cater for future residents to fit car charging points should this be required). So, whether your favourite Strictly is Movie week, where you snuggle up and pop on a film; Musicals week, when you head along to the local theatre, or Couples Choice where you can wander to your pick of places to eat or drink, this apartment is accessible to everything! Forget Kirstie & Phil....you just need JDP to pass you the dream home!



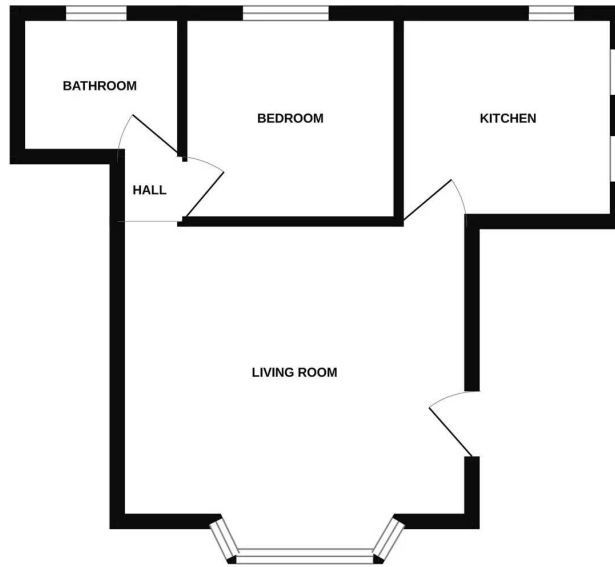
With a gentle Viennese Waltz from your front door into town, to a tango down the high street to pick up the essentials, a quickstep in for some refres...  
 Tenure: Leasehold



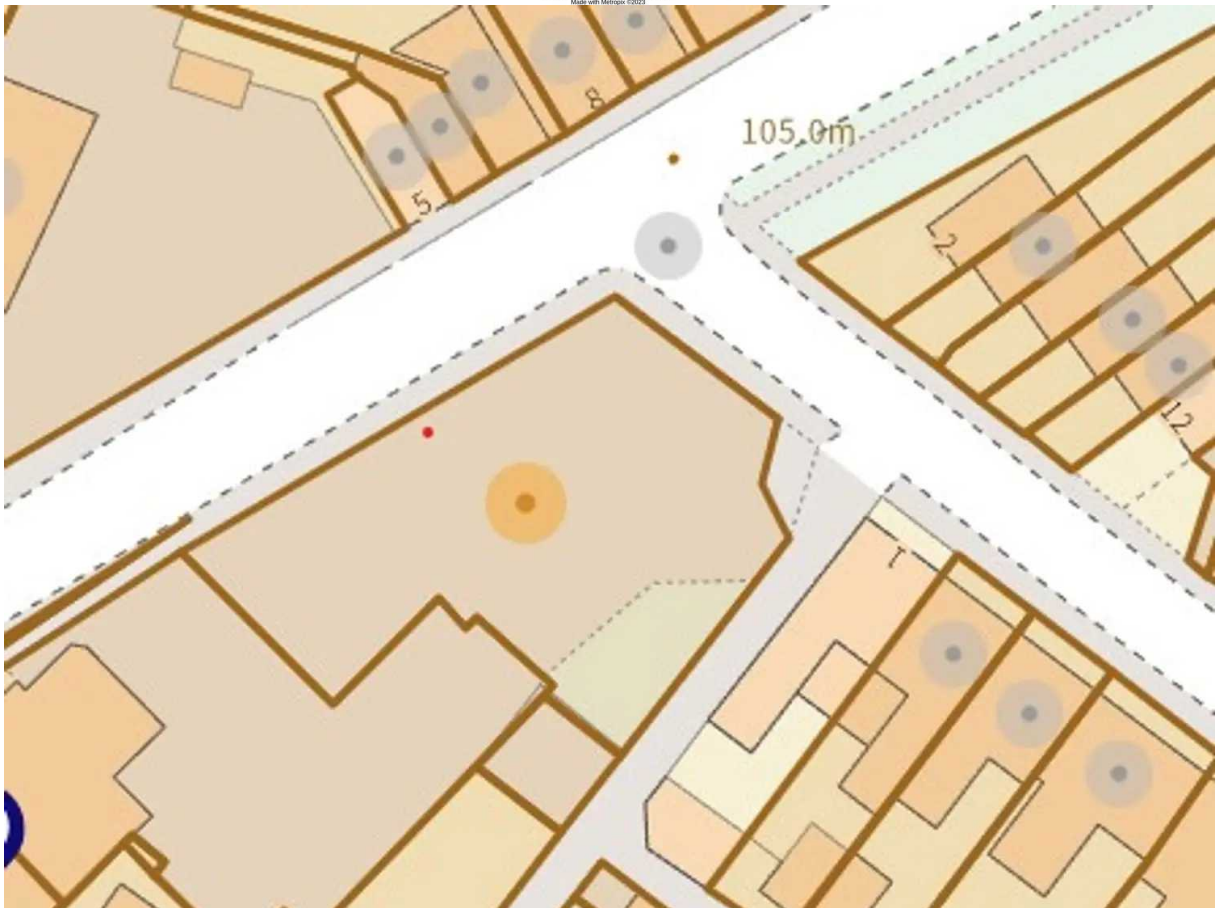
kütch  
The Ge



GROUND FLOOR



While every attempt has been made to ensure the accuracy of the floorplan contained herein, measurements of doors, windows, rooms and any other items are approximate and no responsibility is taken for any error, omission or mis-statement. This plan is for illustrative purposes only and should be used as such by any prospective purchaser. The services, systems and appliances shown have not been tested and no guarantee as to their operability or efficiency can be given.  
Made with Maptopia ©2023



You can include any text here. The text can be modified upon generating your brochure.