



## 7 The Green, Wrenbury

£240,000 Freehold



Delightful 2 bedroom Victorian cottage in the village of Wrenbury with stunning views across the village green • Cosy lounge, complete with a log burner effect fire and original beams • Pleasant South East facing garden, ideal for enjoying the sunshine and alfresco dining on the patio • Bedroom 1 with built-in wardrobes and views over the green • Chain-free



Nestled in the heart of the picturesque village of Wrenbury, this delightful 2 bedroom terraced Victorian cottage offers a tranquil retreat with charming character features and stunning views across the village green. As you step through the front door, you are welcomed into the cosy lounge, complete with a log burner effect fire and original beams, creating a warm and inviting atmosphere perfect for relaxing evenings. The adjacent dining room boasts traditional charm and features stairs leading to the first floor, adding to the cottage's unique character.

The well-equipped kitchen provides a modern touch with integrated appliances including a fridge freezer, electric oven and hob, along with plumbing for a washer and dishwasher, all set against a backdrop of stainless steel sink and ample storage space. The property further benefits from oil central heating, ensuring comfort throughout the seasons. Bedroom 1 offers a peaceful sanctuary with built-in wardrobes and views over the green.

The family bathroom features a mains-fed shower, WC, and wash hand basin, providing modern convenience within a period setting. Additionally, a handy lean-to offers extra storage space, enhancing the functionality of this charming home.

Outside, the property continues to impress with its pleasant South East facing garden, ideal for enjoying the sunshine and alfresco dining on the patio. The garden also features a raised lawn, providing a lovely space for outdoor activities and relaxation. A brick-built outdoor storage area and shed offer ample space for gardening tools and outdoor equipment, ensuring the property is well-equipped for its new owners from day one. This chain-free home presents a rare opportunity to own a piece of village life in the sought-after location of Wrenbury, making it an ideal choice for those looking to embrace countryside living without compromising on comfort and style.

### **Location**

Wrenbury has a selection of local amenities including Post Office/village store, church and 2 public houses, doctors surgery and train station. The nearest Primary Schools are located in Wrenbury and Sound. There are plenty of countryside and canal side walks and cycle paths to be explored and the historic market town of Nantwich is just four miles away. Nantwich is renowned for its historic buildings and independent shops, boutiques and eateries. There is a bus service from Nantwich to Whitchurch through Wrenbury. There are excellent rail connection from Crewe (8 miles away) to London and other major cities. The major road links to the M6 Junction 16 is around 12 miles away.

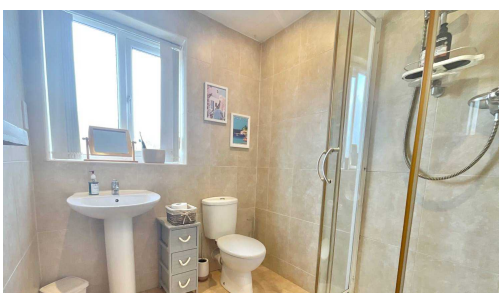


Charming 2-bed Victorian cottage in Wrenbury village. Lounge with log burner effect fire, modern kitchen, SE facing garden. Peaceful location with local amenities and easy access to Nantwich and transport links. Perfect countryside retreat with character.  
Council Tax band: B

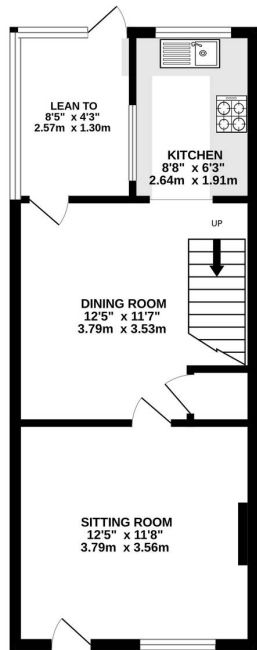
Tenure: Freehold

EPC Energy Efficiency Rating: F

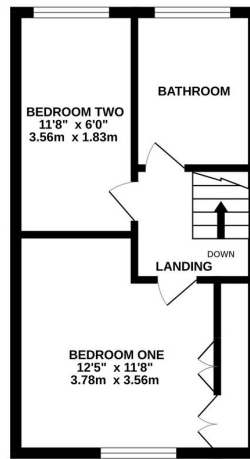
EPC Environmental Impact Rating: F



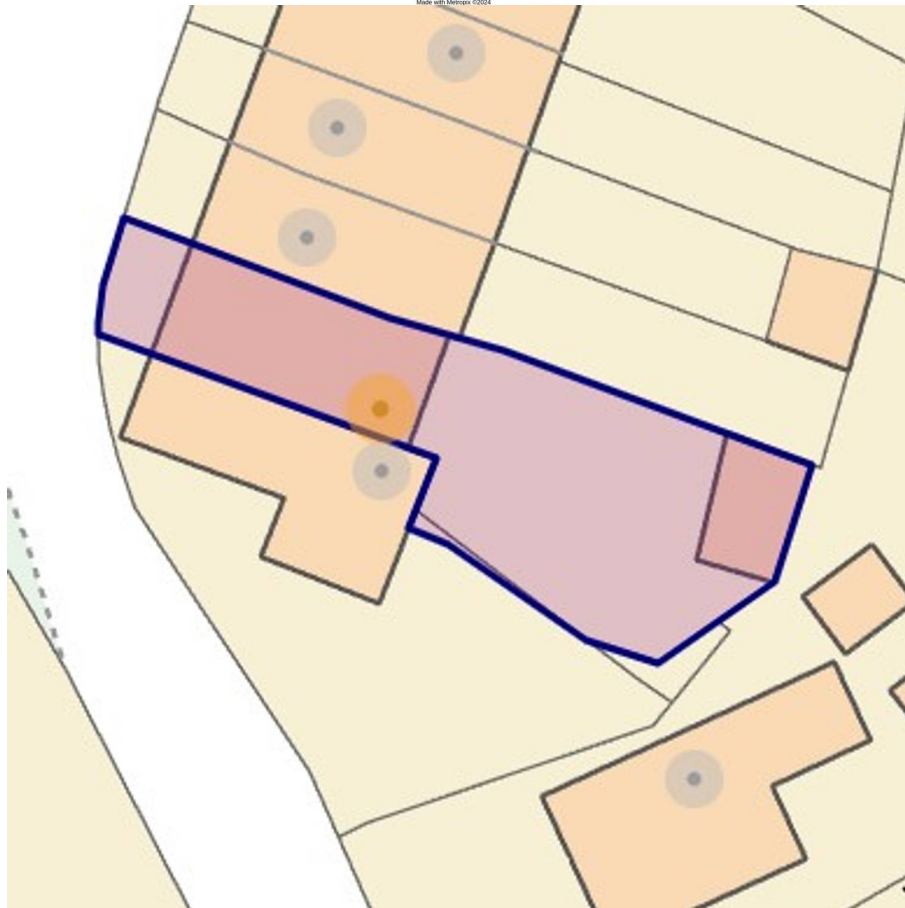
GROUND FLOOR



1ST FLOOR



Whilst every attempt has been made to ensure the accuracy of the floorplan contained herein, measurements of doors, windows, rooms and any other items are approximate and no responsibility is taken for any error, omission or mis-statement. This plan is for illustrative purposes only and should be used as such by any prospective purchaser. The services, systems and appliances shown have not been tested and no guarantee as to their operability or efficiency can be given.  
Made with Metronix CS024



You can include any text here. The text can be modified upon generating your brochure.