



7 Hallahan Close, Stone

£415,000 Freehold



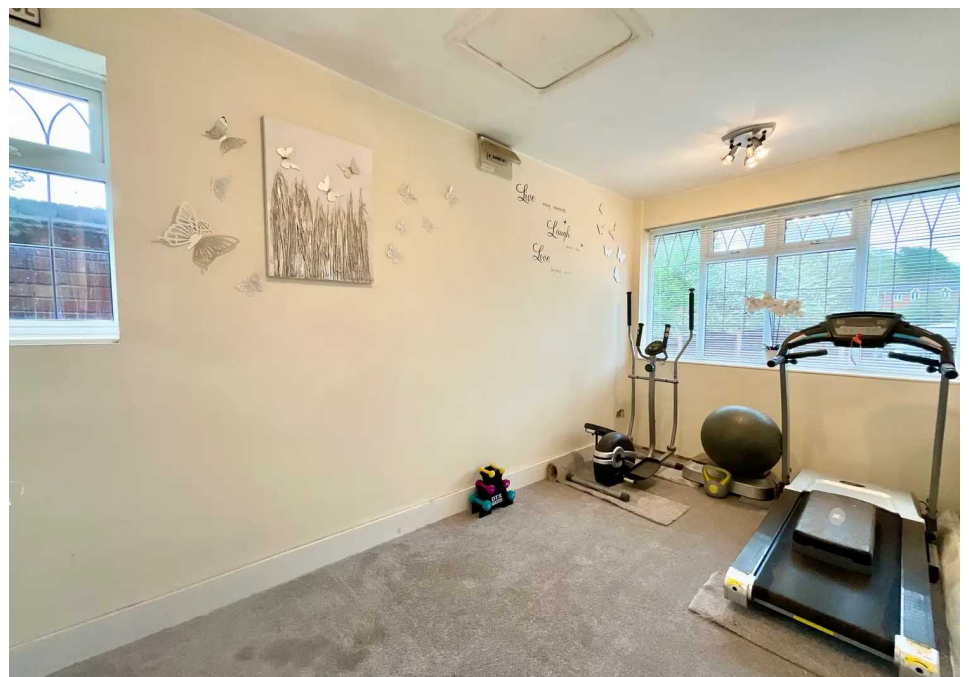
Fabulous family home with ample living space and four good-sized bedrooms. • The converted garaged, currently being used as a gym, could be a study or a playroom or anything to suit your needs. • Calling all 'Kitchen people' this one is for you, brilliant open plan, kitchen/diner/living space that overlooks the garden. • The master bedroom, with fitted wardrobes benefits from a luxurious shower room. • Situated in a sought-after area in Stone, with great schools, parks, country walks and excellent commuter links close by.



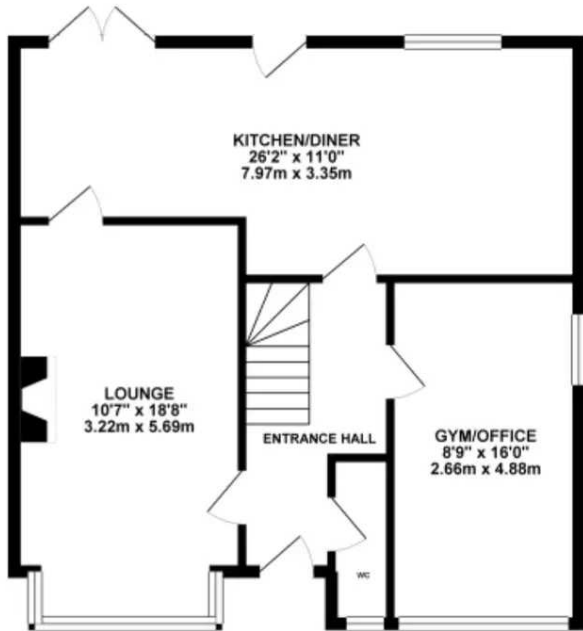
Welcome to Hallahan Close, where the name rolls off the tongue as smoothly as an invitation to explore this captivating home. Tucked away in a private corner plot, this four-bedroom detached family home welcomes with its charm and warmth. Step through the inviting entrance hall, where the downstairs modern guest cloakroom offers convenience and the spacious gym, formerly a garage, presents endless possibilities – perhaps an office or a playroom for the little ones. The generous lounge boasts a bay window and a cosy fireplace. For those who consider themselves ‘kitchen people’ this house is for you! An expansive kitchen/dining/living area awaits, with French doors opening to a delightful patio. This space is a haven for kitchen lovers, offering ample room for cooking, dining, and living. Upstairs, discover four well-proportioned bedrooms and a family bathroom with a shower over the bath. The master bedroom indulges with fitted wardrobes and a luxurious shower room. Outside, a spacious driveway provides ample parking, while your own private access to the street ensures convenience. The rear garden basks in the southwest sun, featuring a patio and lawn – an idyllic setting for entertaining guests or simply enjoying the good old English weather! Located near the town centre, with excellent schools, parks, and scenic walks all near by. Don't miss out on this brilliant family home that has been truly cherished. Call us now – at Hallahan Close, opportunities like this won't last long!



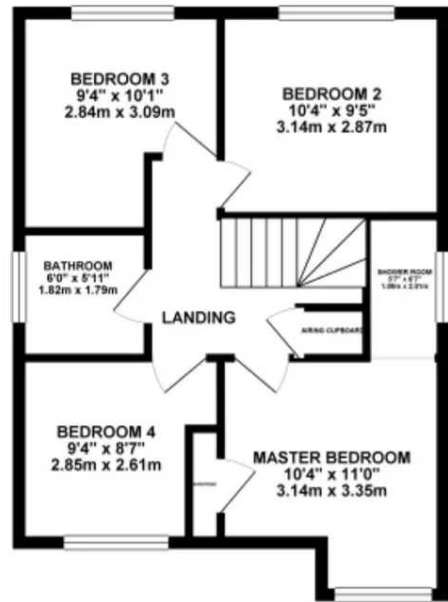
Charming 4-bed detached home in Stone. Spacious kitchen/living area, gym/office, lounge with fireplace, master with wardrobes/shower room. Southwest garden, ample parking, near town centre. Ideal family home – call now!
Council Tax band: E
Tenure: Freehold



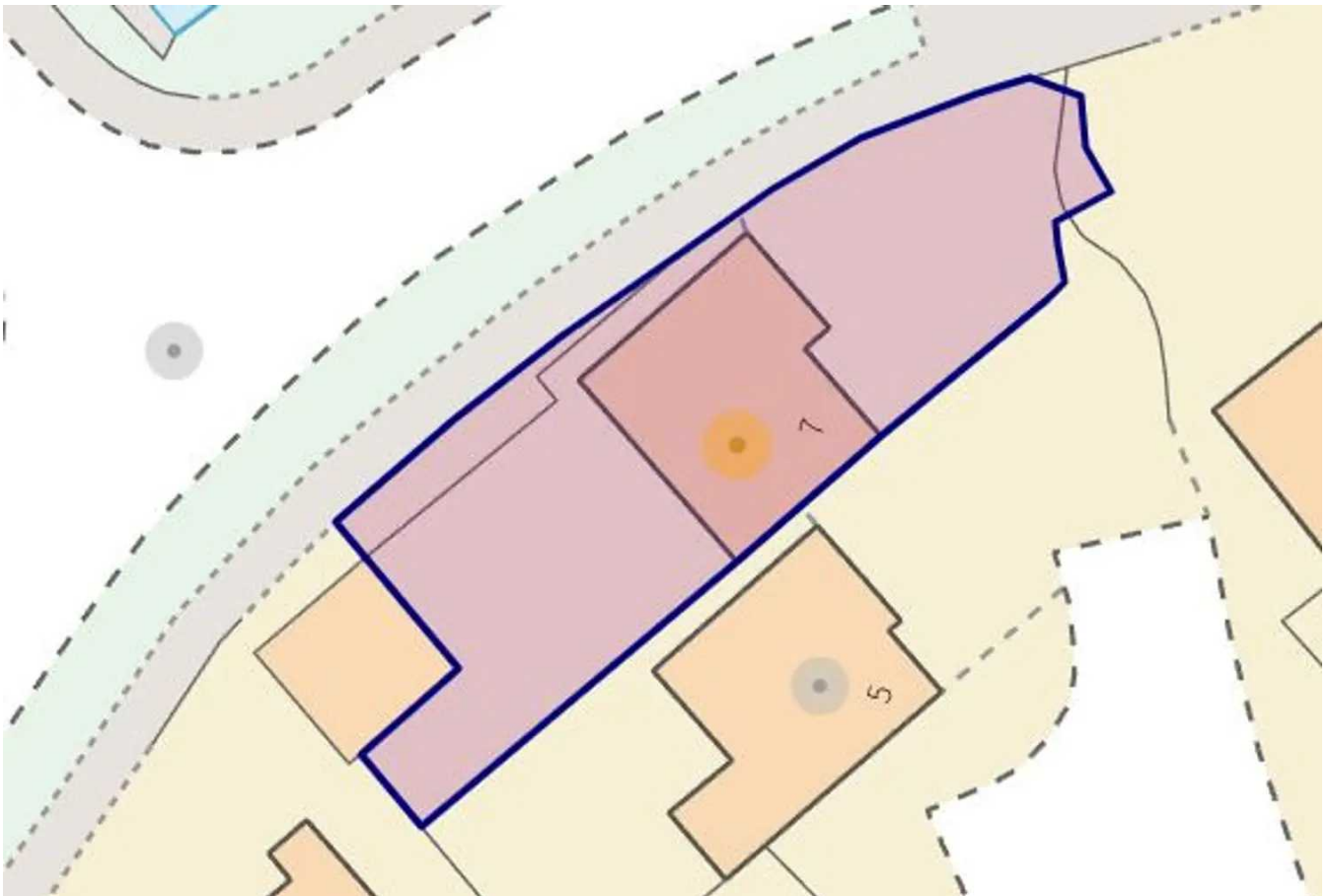
GROUND FLOOR



1ST FLOOR



Whilst every attempt has been made to ensure the accuracy of the floorplan contained here, measurements of doors, windows, rooms and any other items are approximate and no responsibility is taken for any error, omission or mis-statement. This plan is for illustrative purposes only and should be used as such by any prospect or purchaser. The services, systems and appliances shown have not been tested and no guarantee as to their operability or efficiency can be given.
Made with hbxplan ©2024



You can include any text here. The text can be modified upon generating your brochure.