

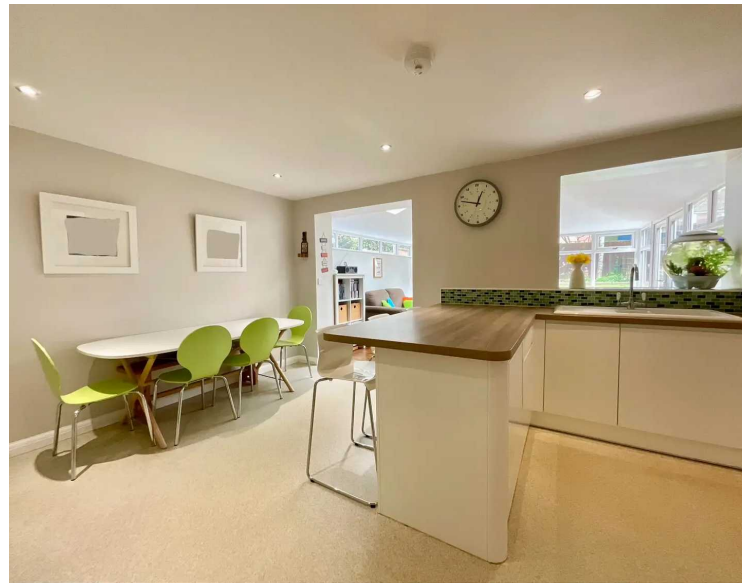


14 Candler Drive, Stone

£350,000 Freehold



Ample living space from the spacious lounge to the expansive kitchen and dining area. • Practical perfection, with a utility room, and garage space for storage. • Garden delights, immaculately kept, with pretty borders and a secluded seating area. • Situated on a popular estate close to Stone town centre, excellent schools, amenities and commuter links. • Serene Spot in a picture-perfect plot – tucked on Candler Drive, this 5-bedroom detached home overlooks the park.



Can you believe your luck? Welcome to this 5-bedroom detached family home on Candler Drive, positioned in a serene spot within the estate. This home overlooks the park at the end of a cul-de-sac, providing a picturesque backdrop to your daily routines. Can you imagine the possibilities? As you step into this lovingly maintained home, a welcoming entrance hall guides you to a spacious lounge with a big and beautiful bay window to the front. Continue your journey to discover the expansive kitchen and dining area. Ample space awaits family gatherings around the dining table, while the L-shaped kitchen boasts integrated appliances. Wander further into the warm embrace of the conservatory, offering additional living space and French doors leading to the rear garden. Can you utilise every inch? A utility room, born from the conversion of the garage by the current owners, becomes a testament to practicality while still providing access to the garage for handy storage. Can you picture your sanctuary? Ascend to the first floor, where four generously sized bedrooms await. The largest among them enjoys views over the front from the bay window and benefits from an ensuite with a walk-in shower. A smart and modern family bathroom, complete with shower over bath, completes this floor. Can you reach for the stars? Venture to the top floor, currently used as the master suite, which grants you the ultimate privacy and features a great-sized ensuite with a walk-in shower. Can you feel at home? Outside, the immaculate rear garden includes a patio, lawn, pretty borders, and a secluded seating area, promising blissful rest under the open sky. Can you see yourself here yet? A truly remarkable family home offering living space spread across three storeys. Situated on a popular estate close to Stone town centre, it ensures every need is met, from excellent schools to convenient amenities and commuter links. Can you afford to miss out on Candler Drive? Don't hesitate – seize the opportunity and contact us today to arrange a viewing at Candler Drive.



Captivating 5-bed detached family home on Candler Drive nestled in a tranquil estate. Boasts park views, spacious rooms, modern kitchen, conservatory, utility room, and delightful garden. Master suite on top floor. Perfect for family living near Stone town centre. Arrange a viewing now! Council Tax band: E

Tenure: Freehold

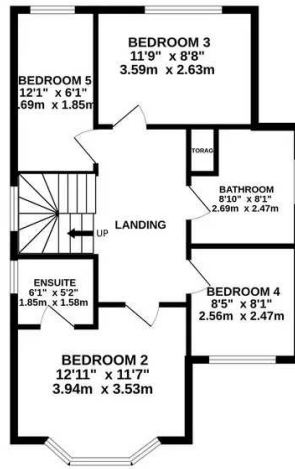
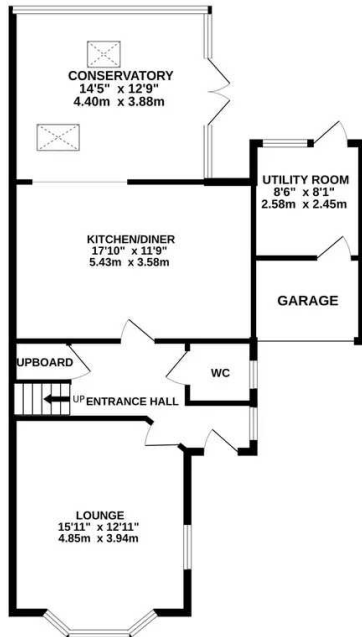




GROUND FLOOR

1ST FLOOR

2ND FLOOR



Whilst every attempt has been made to ensure the accuracy of the floorplan contained here, measurements of doors, windows, rooms and any other items are approximate and no responsibility is taken for any error, omission or mis-statement. This plan is for illustrative purposes only and should be used as such by any prospective purchaser. The services, systems and appliances shown have not been tested and no guarantee as to their operability or efficiency can be given.
Made with Metropix ©2024

You can include any text here. The text can be modified upon generating your brochure.

01785 814917