



111 Priory Road, Stone

£115,000 Leasehold



Two-bedroom upper floor flat, with generous living area, kitchen, bathroom, and ample storage. • Step outside into your own sun trap garden, offering a peaceful retreat right at your doorstep. • Situated on Priory Road, this flat offers fantastic accessibility and is within walking distance to Stone. • This property has endless potential, making it an ideal choice for first-time buyers or investors looking to add their personal touch. • Being offered for sale with no upward chain.



"Mary, Mary, quite contrary, how does your garden grow?" this great sized two-bedroom flat on Priory Road in Stone offers its own garden that holds promise for those with a green thumb. Step through your private front door into an entrance hall, complete with convenient storage space for coats and shoes. Ascend the stairs to find a spacious landing, offering ample room for additional storage solutions. Leading you to the kitchen, which overlooks the gardens outside, with space for all necessary appliances. A well-appointed bathroom boasts a shower over the bath. The flat features two generously sized bedrooms and a spacious living area. This property holds much promise making it an excellent opportunity for first-time buyers eager to put their stamp on their new home, investors seeking a project, or those looking to downsize while still enjoying the convenience of living within walking distance to Stone. Situated on a quiet road, one of the biggest bonuses of this flat is its own sun trap garden, providing a private outdoor space to unwind and enjoy the sunshine. Being offered for sale with no upward chain, be quick to call us to arrange your viewing.



2-bed flat on Priory Road in Stone with private garden. Features spacious living area, ample storage, and kitchen overlooking garden. Ideal for first-time buyers, investors, or downsizers. Offered with no upward chain. Call now to view!

Council Tax band: A

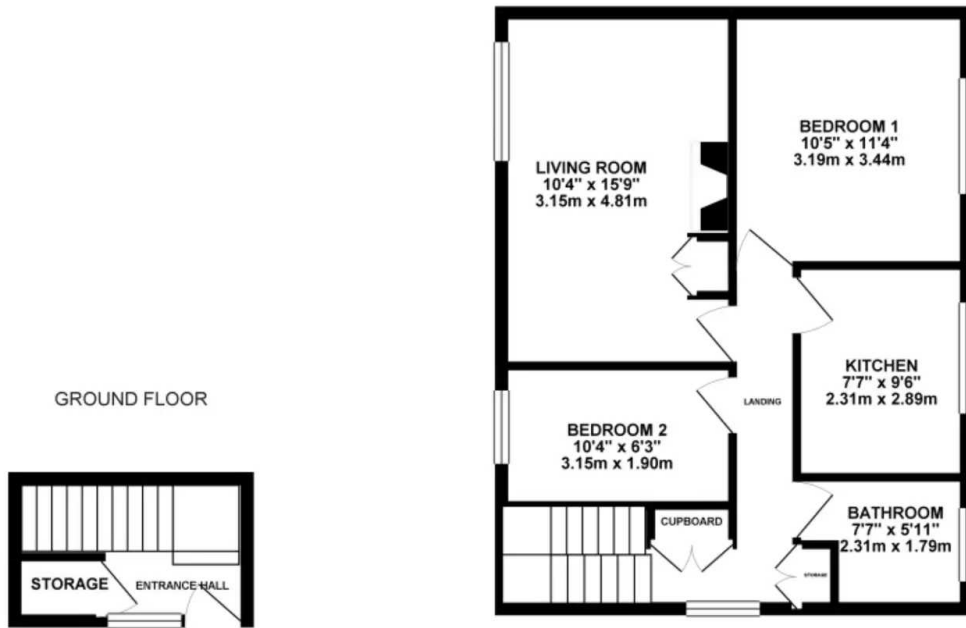
Tenure: Leasehold

EPC Energy Efficiency Rating: C

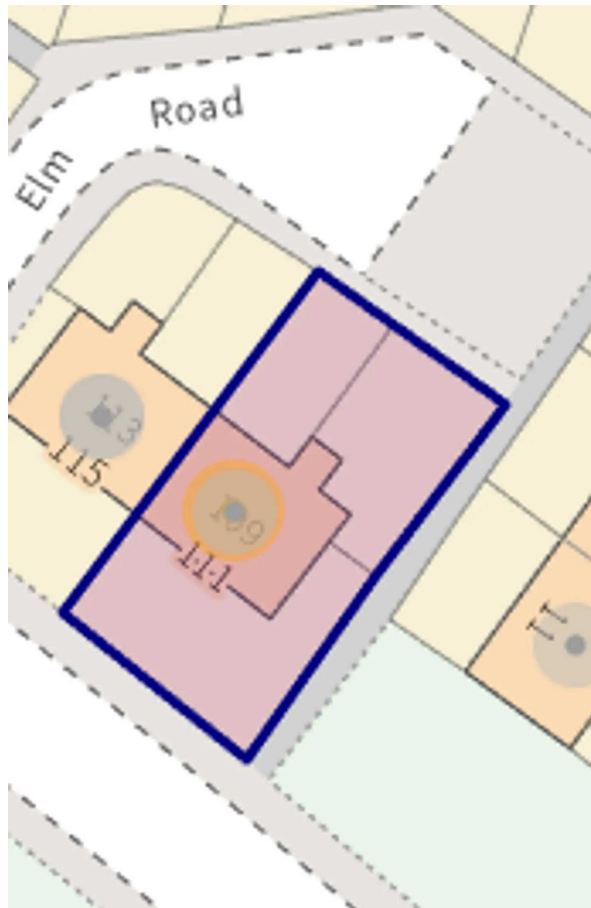
EPC Environmental Impact Rating:



1ST FLOOR



Whilst every attempt has been made to ensure the accuracy of the floorplan contained here, measurements of doors, windows, rooms and any other items are approximate and no responsibility is taken for any error, omission or mis-statement. This plan is for illustrative purposes only and should be used as such by any prospective purchaser. The services, systems and appliances shown have not been tested and no guarantee as to their operability or efficiency can be given.
Made with Metropix ©2024



You can include any text here. The text can be modified upon generating your brochure.