



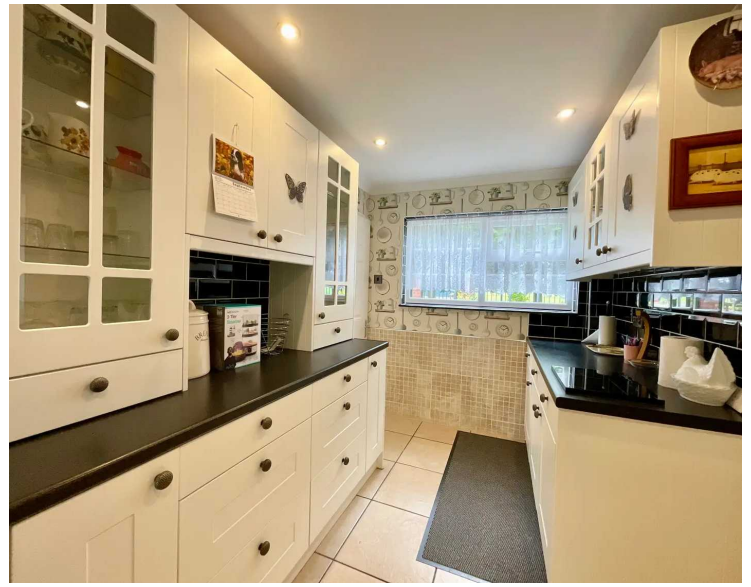
16 Ash Road, Stone

£200,000 Freehold



Standing out like a black and white domino, this house offers a striking and distinctive design that sets it apart. • With an extension to the side, including a loft room above, there's plenty of room for your imagination to run wild. •

The modern kitchen provides a stylish focal point, while the spacious living room and conservatory offer ample living spaces. • Tucked away in a cul-de-sac, this house offers peace and quiet while still being close to amenities. • Enjoy the privacy of the garden, complete with a summer house. Plus, with views of the nearby cricket ground, you can catch the action without leaving home.

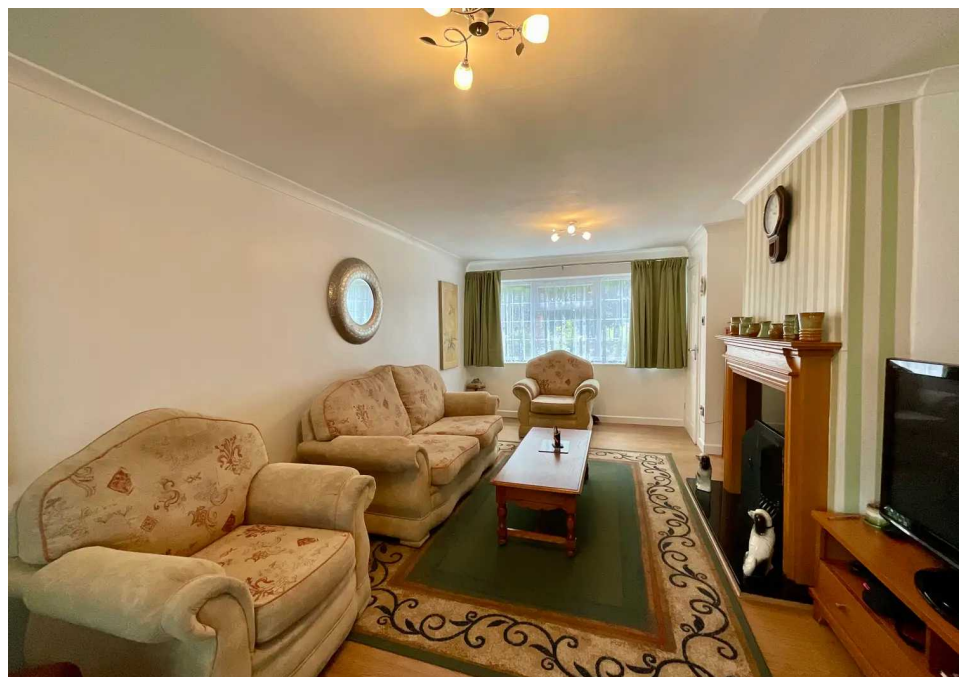


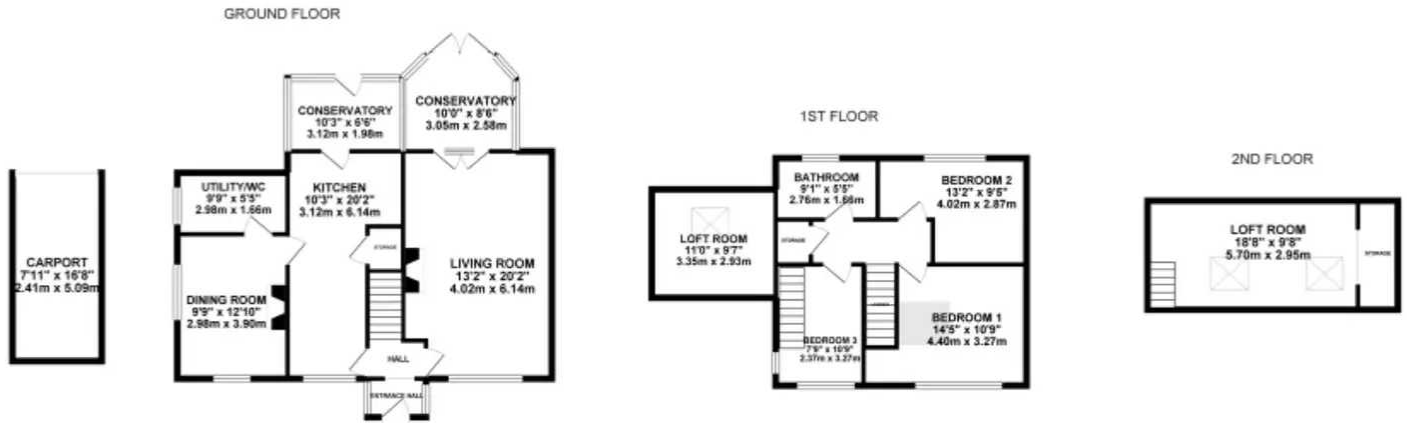
Welcome to Ash Road, where every corner promises a unique twist! This striking property stands out like a black-and-white domino amid the traditional landscape of the neighbourhood. Step through the entrance hall, where a modern kitchen beckons, its sleek design contrasting with the charm of the rest of the house. Adjacent, the extension to the side offers endless possibilities—whether it becomes a dining area, a playroom, or even an additional bedroom—with a loft room above, providing versatile space for your imagination to play. There's also a generous utility room and a downstairs guest cloakroom. A spacious living room and a conservatory complete the downstairs area, offering seamless indoor-outdoor living. Three good-sized bedrooms upstairs provide ample accommodation, while the loft room offers even more potential—a perfect retreat or home office. Outside, the property boasts gardens to both the front and back, providing greenery and privacy. A convenient carport ensures your vehicle stays protected. From the garden, enjoy views of the nearby cricket ground—a prime spot to catch a match from the comfort of your own home. Here, a summer house invites you to unwind amidst your surroundings. Tucked away in a cul-de-sac, this house offers peace and quiet while remaining close to amenities. Stone is nearby, offering everything you need within easy reach. With its unique style and abundance of features, Ash Road offers endless potential for you to make it your own. Don't miss your chance to experience the charm and versatility of this one-of-a-kind property.



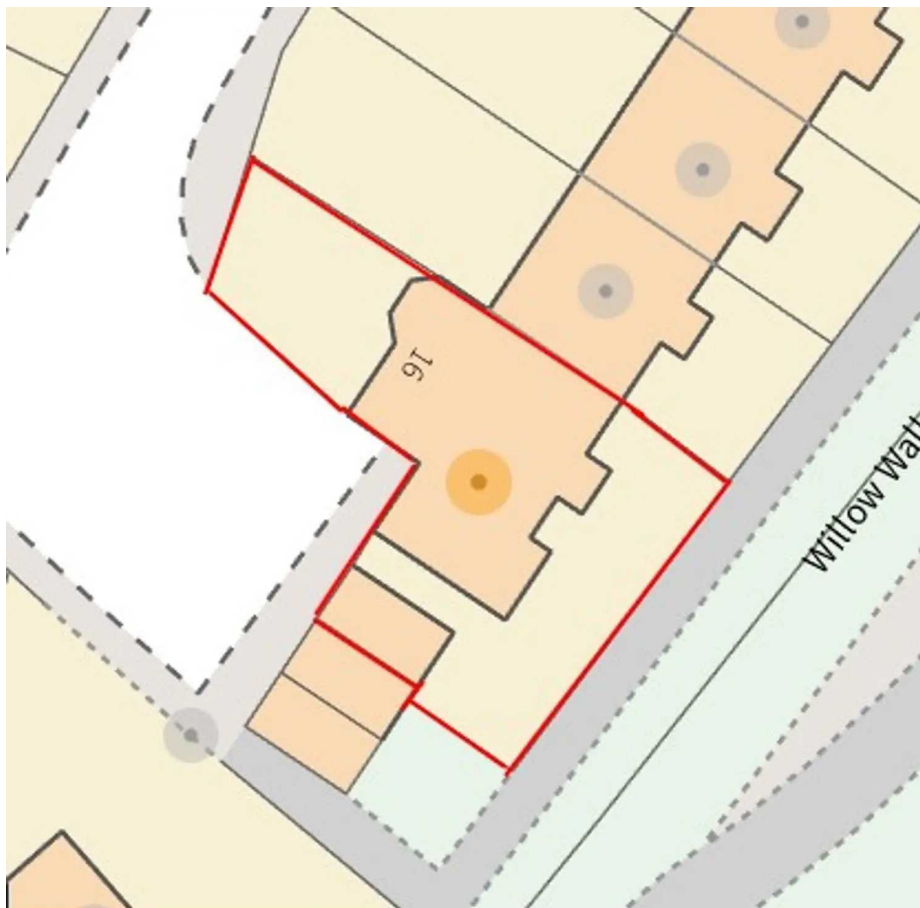
Modern and versatile property with unique style on Ash Road. Features spacious living areas, 3 bedrooms, loft rooms, gardens, carport, and summer house. Prime location near amenities and cricket ground. Peaceful cul-de-sac setting. Ideal for those seeking charm and potential. Council Tax band: A

Tenure: Freehold





Whilst every attempt has been made to ensure the accuracy of the floorplan contained here, measurements of doors, windows, rooms and any other items are approximate and no responsibility is taken for any error, omission or mis-statement. This plan is for illustrative purposes only and should be used as such by any prospective purchaser. The services, systems and appliances shown have not been listed and no guarantee as to their operability or efficiency can be given.
 Made with Metropix ©2024



You can include any text here. The text can be modified upon generating your brochure.