



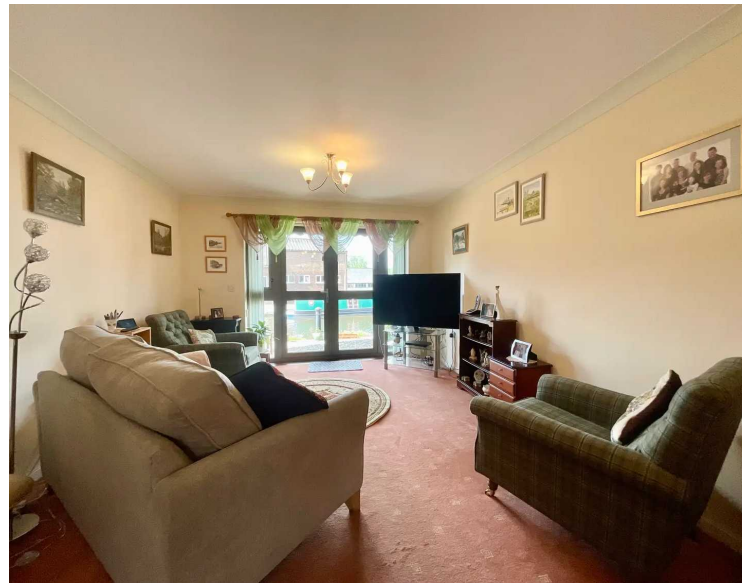
Apt 1, Cameron Wharf Newcastle Street, Stone



£240,000 Leasehold

Enjoy the serene beauty of canal-side living in this two-bedroom ground-floor apartment with a spacious wraparound garden that offers picturesque views. • The interior features a spacious living and dining room with French doors to the garden, a fully fitted kitchen with built-in appliances, and a bathroom with a walk-in shower. •

The exclusive front door and private back gate provide an added sense of privacy and seclusion. • The wraparound garden with a gravel and decked area, surrounded by beautiful shrubbery and flowers, offers a fantastic outdoor retreat right at your doorstep. • Situated just on the edge of the town centre, you're incredibly close to shops, amenities, and the train station, combining convenience with peaceful living.



Time to get your ducks in a row! This rare opportunity to own a delightful two-bedroom apartment at Cameron Wharf is not to be missed. In a super desirable location, this charming home offers canal-side living and the convenience of town amenities just around the corner. The contemporary interior boasts a spacious living and dining room with French doors opening to the garden, providing picturesque canal views. The main bedroom is a double with ample fitted wardrobe space, while the second bedroom is perfect for guests or a home office. The fully fitted kitchen is equipped with built-in cooking appliances and space for additional appliances, and the bathroom features a walk-in shower. Outside, enjoy the privacy of your own front door and a spacious wraparound garden overlooking the canal, featuring a gravel and decked area—perfect for counting those ducks! With allocated parking, visitor spaces and a private back gate.. Don't miss out on this exceptional opportunity—schedule a viewing today and see why this apartment is truly a rare find!



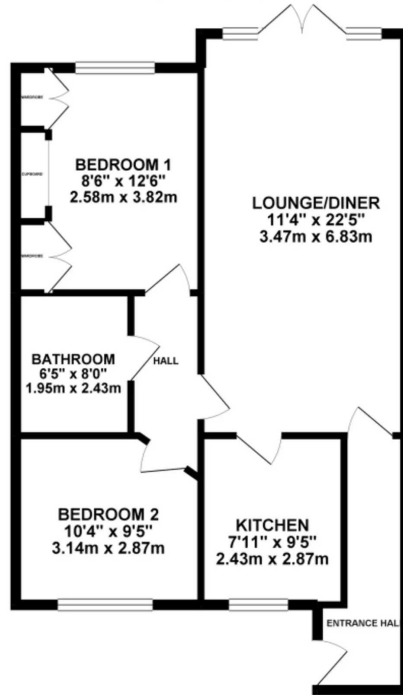
Rare 2-bedroom apartment at Cameron Wharf featuring canal views. Spacious living/dining room, fully fitted kitchen, walk-in shower. Private front door, wraparound garden, allocated parking, visitor spaces. Desirable location with town amenities nearby. Don't miss this exceptional opportunity!

Council Tax band: C

Tenure: Leasehold



GROUND FLOOR 693.34 sq. ft.
(64.41 sq. m.)



TOTAL FLOOR AREA : 693.34 sq. ft. (64.41 sq. m.) approx.

Whilst every effort has been made to ensure the accuracy of the floorplan contained herein, measurements of doors, windows, carpets and any other items are approximate and no responsibility is taken for any error, omission or misstatement. This plan is for illustrative purposes only and should be used in conjunction with any prospective purchaser. The services, systems and appliances shown herein have not been tested and no guarantee is to their operation or efficiency can be given.
Made with Metaphor 8/2/04



You can include any text here. The text can be modified upon generating your brochure.

01785 814917