



3 Pheasant Walk, Loggerheads

£625,000 Freehold



A simply superb five bedroom detached property, with an abundance of space for the whole family, or perhaps the perfect multi generational home! • Situated on a private and generous plot with wrought iron railings and gates which provide access to the driveway with space for multiple vehicles! • To the front and rear of the property you shall find mature gardens with a range of plants, and shrubs as well as a pond with patio seating area. • With the added bonus of having two extremely large bedrooms, one being used as the master with ensuite and one as bedroom two, but you also have the space to add an ensuite as well! • Located in the sought after village of Loggerheads where you can enjoy a range of local amenities as well as having a variety of woodland walks!



Has your property search left you feeling a bit deflated? A feeling that you will never find what you are searching for? YES! I hear you cry! Well look no further for we have found your new home! This fantastic five bedroomed detached family home is ready and waiting for you to make your own. With an abundance of space throughout, you really will have all your dreams come true. Are you keen to hear more? Good! Let me take you to my favourite room of the house (hard to choose, I know!) which is the stunning kitchen/ breakfast room which is a great sized room fitted with matching cream base and eye level units with complementing worktop and matching upstands. Rangemaster oven with matching extractor over, space for freestanding fridge/freezer and integrated Bosch dishwasher. Stainless steel sink and drainer with chrome mixer tap over, tiled flooring, uPVC double glazed window overlooking the garden and bifolding doors which provide seamless access to the patio at the rear. The kitchen also provides access to the perfectly appointed utility room with wood effect flooring, stainless steel sink and drainer with chrome mixer tap over, Worcester boiler and space for your washer and dryer under counter. Wall mounted units, radiator and a door leading to the double garage. Once you have finished cooking up a feast in the kitchen, you surely must need somewhere to relax and enjoy your creations? Well, lucky for you we have the most perfect dining room with plenty of space for your extendable dining table to fit the whole family, decorative coving and ceiling rose as well as a large uPVC double glazed bow window to the front. After satisfying your appetite and feeling a bit snoozy, time to sleep off the banquet in the spacious living room with uPVC double glazed bow window to the front and access to the conservatory which provides uninterrupted views over the stunning rear garden. Are you excited to see what else this fantastic home has to offer?! Good, Well let me take you up the stairs and onto the first floor landing. You can find five double bedrooms all with uPVC double glazed windows and radiators. The master suite is a generous room with plenty of space for additional furniture, there is also an ensuite that has been fitted with a corner shower and aqua board splash areas, chrome heated towel rail, white high gloss vanity with complementing worktop, tiled splash areas, wash hand basin and W/C. There is one final surprise for you on the first floor which is bedroom two. Now this room is just oozing with potential to become another fabulous sized room with possibility to add an ensuite! There are dual aspect uPVC double glazed windows as well as a dressing area! Venturing outside now to the vast gardens which wrap both front and rear elevations with a variety of mature plants and shrubs, to make any gardener turn green with envy! You could watch the hours fly by simply sitting and taking it all in, with so many different varieties of plants, you are sure to find something to tickle your fancy. If your not the green fingered type, then why not take a moment to enjoy listening to the sound of the pond and soak up the sun whilst lounging on a deck chair with a good book, or glass of wine, whichever you prefer?! Sounds like heaven to me? So why not make this dream home turn into your reality by calling our Eccleshall office today



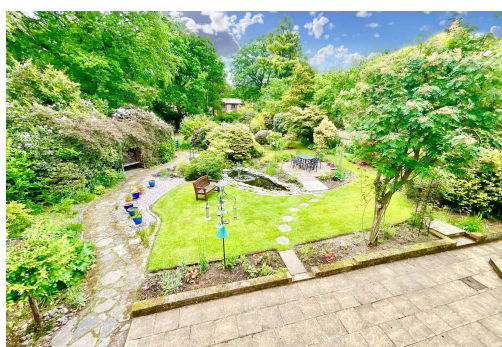
Escape the property search frustration and step into your dream home! This stunning five-bedroom detached family home boasts spacious rooms, a stylish kitchen, inviting living spaces, and a beautiful garden. Enquire today to make it yours!

Council Tax band: F

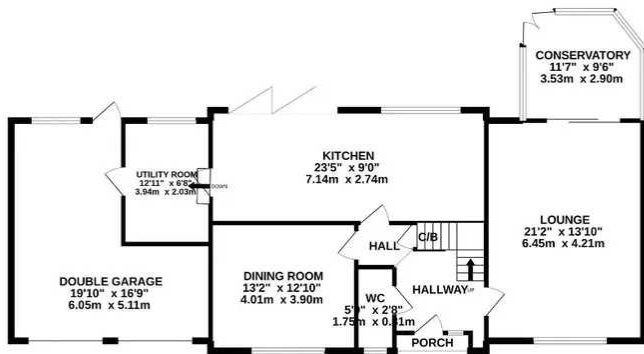
Tenure: Freehold

EPC Energy Efficiency Rating: C

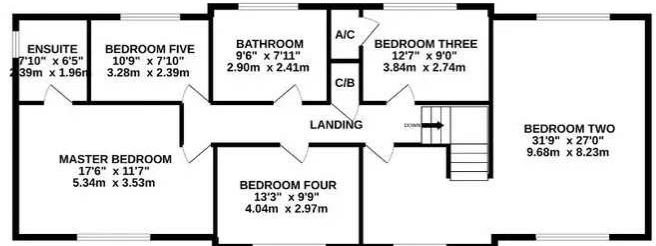
EPC Environmental Impact Rating: C



GROUND FLOOR



1ST FLOOR



Whilst every attempt has been made to ensure the accuracy of the floorplan contained here, measurements of doors, windows, rooms and any other items are approximate and no responsibility is taken for any error, omission or mis-statement. This plan is for illustrative purposes only and should be used as such by any prospective purchaser. The services, systems and appliances shown have not been tested and no guarantee as to their operability or efficiency can be given.
Made with Metropix ©2022

