

Fairview, Burston

£499,950 Freehold



360-degree panoramic countryside views to the master bedroom's private balcony overlooking fields, Fairview offers a gorgeous setting. • This Edwardian four bedroom home oozes charm with its bright white exterior and tasteful modernizations. • With three reception rooms, Fairview provides ample space for family living. • Immaculate breakfast kitchen is a highlight, featuring a unique well with lights and French doors opening onto the patio area. • The expansive wrap-around driveway and detached garage ensure ample parking and storage, while the spacious garden and patio areas are there to enjoy.



Welcome to Fairview, a stunning four-bedroom detached Edwardian home that truly lives up to its name. This bright white gem stands proudly, offering unparalleled 360-degree countryside views from every window, making it a haven of tranquillity and beauty. Tucked amidst lush greenery, this home boasts views that will take your breath away, providing a true escape from the everyday hustle and bustle. Step inside and discover a thoughtfully extended and modernized interior, ready to be transformed with the warmth and personality of its new owners, and with no upward chain to delay your move-in. Fairview features three reception rooms, including a fabulous living room filled with natural light from dual aspect windows, perfect for enjoying the stunning views. For more intimate gatherings, a snug lounge through to the dining room offers a cosy retreat. The immaculate breakfast kitchen to the rear exudes country cottage charm, complete with a unique feature – a well with lights, visible as you cook! French doors open to the patio area, providing yet another vantage point to soak in the beautiful surroundings. Upstairs, four bedrooms await, including three doubles. The master bedroom boasts its own balcony, ideal for waking up to gentle breezes and uninterrupted views of the fields, or stepping out to enjoy the sunshine just steps from your bed. The master suite also includes an ensuite with a walk-in shower, while a family bathroom with a separate bath and shower caters to the remaining bedrooms. Outside, private gates lead to Fairview's ample-sized wrap-around driveway, offering plenty of parking space and access to a generously sized single detached garage with additional storage above. The rear garden is a true oasis, featuring a gorgeous landscape and patio areas perfect for relaxation, all surrounded by fields that ensure complete privacy, save for the occasional visit from grazing cows. Fairview enjoys an ideal location near Stone and Stafford, providing excellent schooling options and convenient commuter links. Don't miss your chance to experience Fairview's breath-taking views and exceptional charm – call now to arrange your viewing and make Fairview your own slice of paradise.



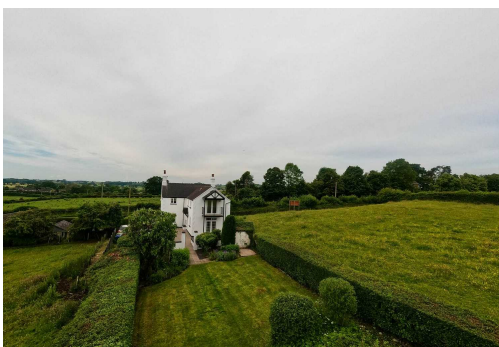
Stunning 4-bed Edwardian home with 360-degree countryside views. Modernised interior, 3 reception rooms, country cottage kitchen, master balcony, driveway, garage, private garden. Ideal location near Stone and Stafford. Book a viewing today!

Council Tax band: D

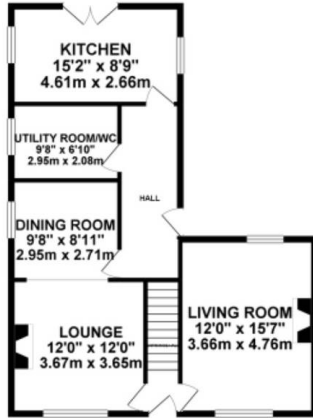
Tenure: Freehold

EPC Energy Efficiency Rating: E

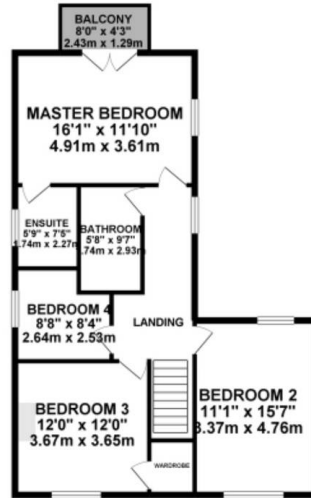
EPC Environmental Impact Rating:



GROUND FLOOR 981.92 sq. ft.
(91.22 sq. m.)

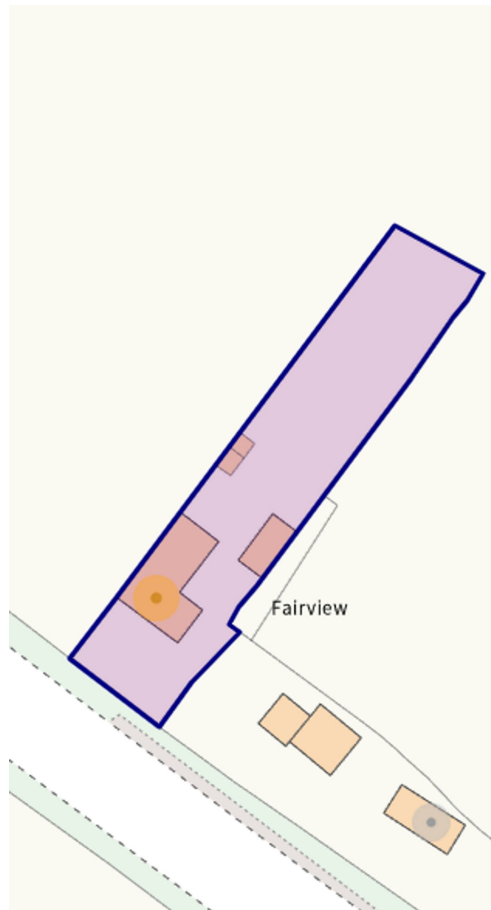


1ST FLOOR 809.62 sq. ft.
(75.22 sq. m.)



TOTAL FLOOR AREA : 1791.54 sq. ft. (166.44 sq. m.) approx.

Whilst every attempt has been made to ensure the accuracy of the floorplan contained here, measurements of doors, windows, rooms and any other items are approximate and no responsibility is taken for any error, omission or misstatement. This plan is for illustrative purposes only, and should be used as such by any prospective purchaser. The services, systems and appliances shown have not been listed and no guarantee as to their operability or efficiency can be given.
Made with Metropix ©2014



You can include any text here. The text can be modified upon generating your brochure.