



## 3 East Holme, Hilderstone

£240,000 Freehold



Uninterrupted views from the rear are truly something. Whether enjoying your morning coffee or unwinding in the evening, the scenery offers a backdrop that you can appreciate all year round. • This three-bedroom home is deceptively spacious. The large living room with a cosy log burner, a delightful dining room, and a galley kitchen provide plenty of space for family living. • The outbuilding adds versatile space to the home. Whether you need a utility room, WC, office, or extra storage, this area can be adapted to meet your needs. • In the picturesque village of Hilderstone, East Holme offers a rural setting, yet it remains conveniently close to local towns, excellent commuter links, and great schools. • Being sold with no upward chain, this fabulous family home is ready for you to start creating your new home sweet home!



Discover East Holme in the picturesque village of Hilderstone, where your new home awaits. This deceptively spacious three-bedroom mid-terraced house is full of character and charming scenic views...truly a place to call home. As you enter, a welcoming hallway leads to the living room, where a log burner adds a touch of warmth and French doors open out to the garden, perfect for enjoying the peace of this rural setting. Adjacent to the living room is a second versatile reception room, this could be the delightful dining room, ideal for family meals. The galley kitchen features a fabulous under-stairs pantry for all your storage needs. This space seamlessly connects to a storm porch and a versatile outbuilding, which could be used as a utility room, WC, office, or additional storage. Upstairs, you'll find three generously sized bedrooms. The modern bathroom is equipped with a great-sized walk-in shower, ensuring a refreshing start to your mornings. One of the standout features of East Holme is the breathtaking, uninterrupted views from the rear bedrooms and the garden. Imagine relaxing in a little bar area in the back garden, taking in the stunning scenery and creating wonderful memories with family and friends. The property also boasts a large driveway for off-road parking, adding to its practicality. Set in the serene village of Hilderstone, East Holme is an idyllic setting while still being within easy reach of local towns, excellent commuter links, and great schools. This fabulous family home is being sold with no upward chain, therefore, what are you waiting for, call us now to arrange a viewing and let us welcome you to East Holme, where your new home sweet home begins.



Charming 3-bed terraced house in Hilderstone village. Characterful interiors, log burner, garden views, versatile spaces, modern bathroom, stunning rear views, driveway. Ideal family home with no upward chain in picturesque rural setting. Call now to view!

Council Tax band: B

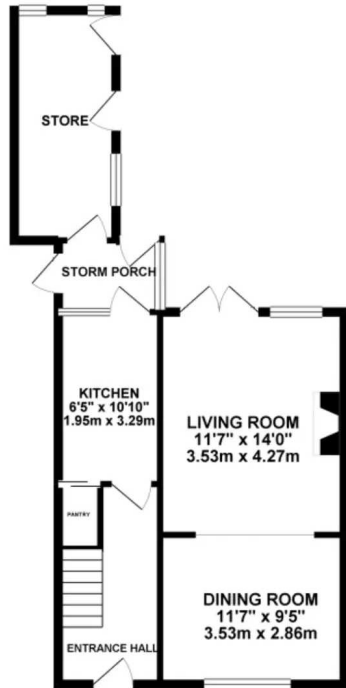
Tenure: Freehold

EPC Energy Efficiency Rating: C

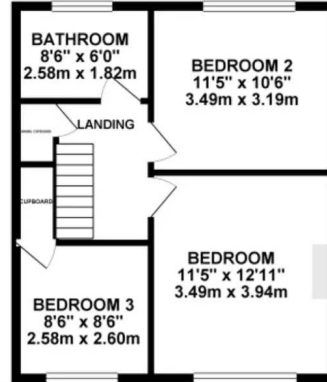
EPC Environmental Impact Rating: D



GROUND FLOOR 542.05 sq. ft.  
( 50.36 sq. m. )

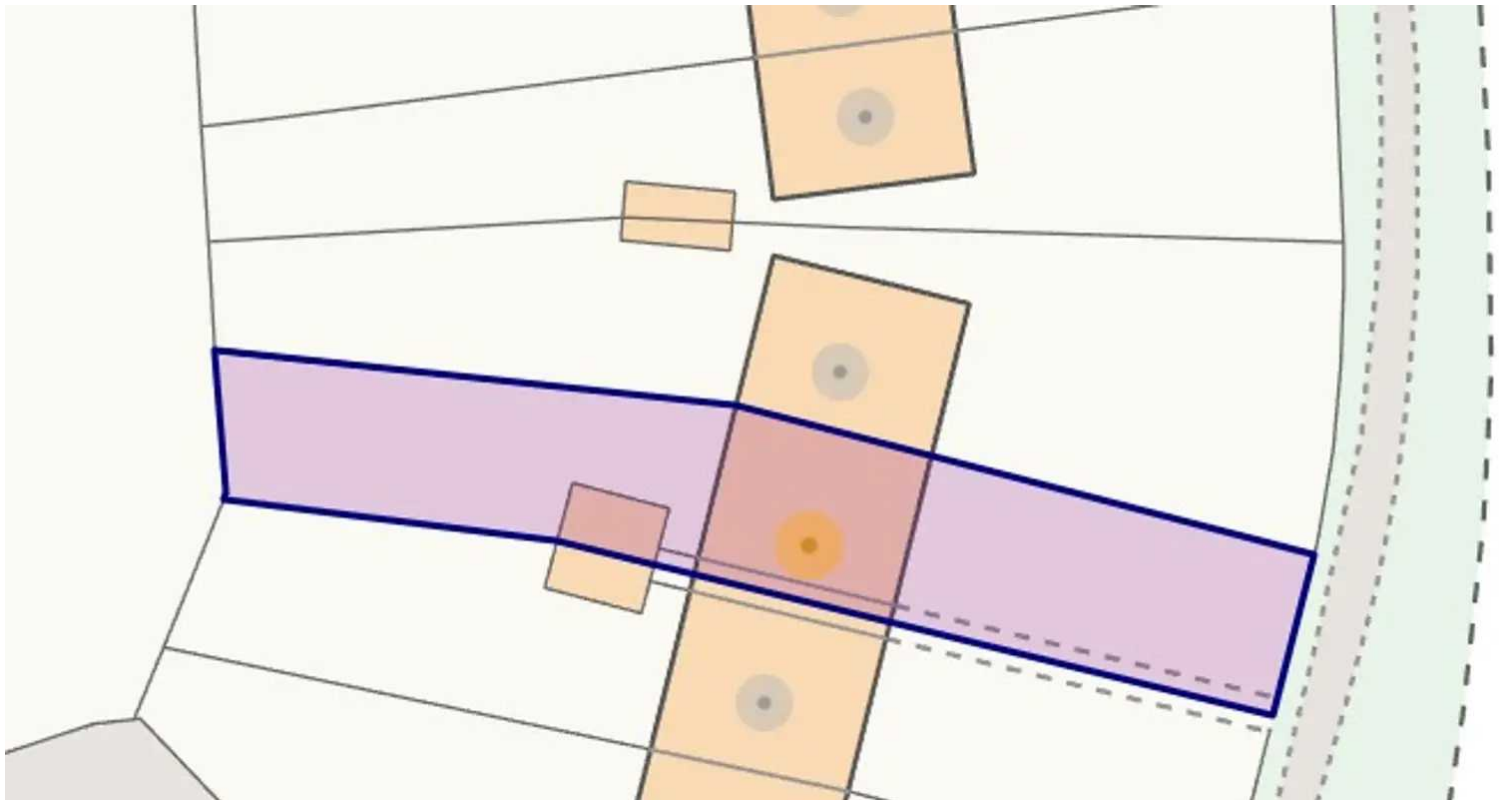


1ST FLOOR 466.31 sq. ft.  
( 43.32 sq. m. )



TOTAL FLOOR AREA : 1008.37 sq. ft. ( 93.68 sq. m. ) approx.

Unless every effort has been made to ensure the accuracy of the floorplan contained herein, measurements of doors, windows, rooms and any other items are approximate and no responsibility is taken for any error, omission or mis-statement. This plan is for illustrative purposes only and should be used as such for any prospective purchaser. The fixtures, systems and appliances shown have not been tested and no guarantee as to their operability or efficiency can be given.  
Made with Metriplan G2024



You can include any text here. The text can be modified upon generating your brochure.

01785 814917