



11 Derrington Place Oulton Road, Stone

£150,000 Leasehold

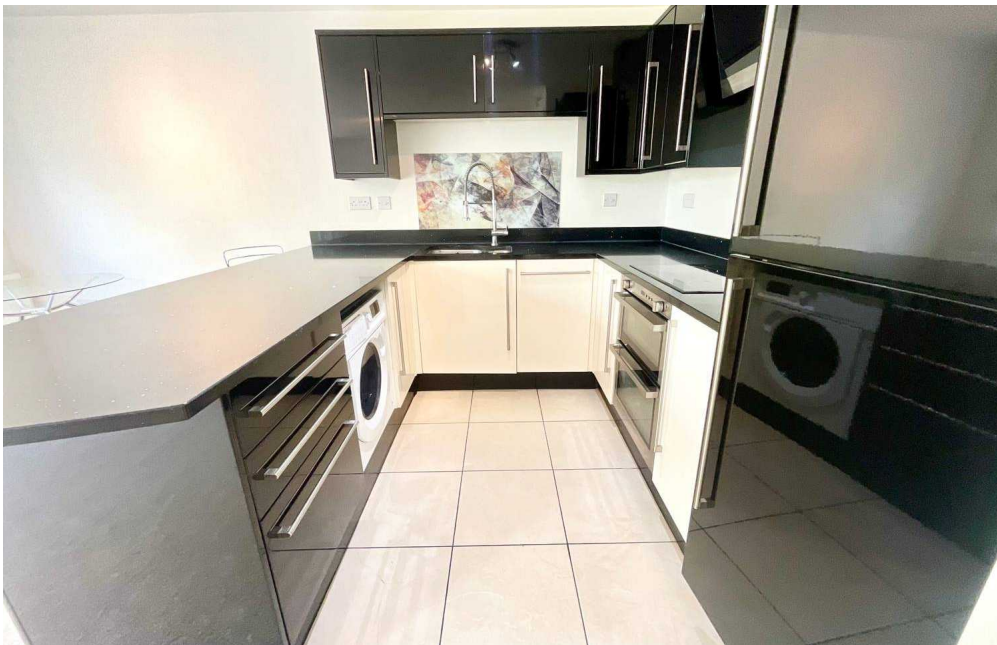


Modern style open plan kitchen/dining living space with large sliding doors opening out onto the patio at the rear

- Best of all offered with no onwards chain, so pack up those bags and get ready to move straight on in!
- Superb ground floor apartment in the heart of Stone
- Prime location within walking distance to Stone high-street, train station, supermarkets, schools, leisure centres and restaurants, to name but a few facilities.
- Allocated off-road private parking area along with beautiful communal garden to enjoy.



Dare to dream and the right property is sure to come knocking! This one bedroom ground floor apartment situated in the heart of Stone is a prime example! A rare opportunity presents itself to become the new owner of this fabulous apartment that is offered with no onwards chain! Convenience is key and this location is everything... Close proximity to Stone Town Centre, excellent commuter links to A34/M6 and having the train station close by too! The apartment comprises a spacious entrance hall that offers lots of handy storage, an open plan kitchen/dining/living area to the rear, a double bedroom to the front and then a sleek and modern bathroom. This apartment caters well to modern living and has a set of sliding doors at the rear that open out into the communal gardens onto a patio area. The fitted kitchen offers a range of integrated appliances including, cooker, electric hob, fridge/freezer, dishwasher and washer/dryer, not to mention complete with granite counters. To the front, there is an allocated off-road private parking area with visitor parking too. This wonderful apartment offers everything that you will need so whether you are a first time buyer, downsizer or an investor this is the one for you. Don't waste anymore time, contact our Stone office to arrange your viewing today!



Dream apartment in Stone Town Centre with no chain! 1 bed, open plan living, modern kitchen, integrated appliances, communal gardens, parking. Perfect for first-time buyers, downsizers, or investors. Near A34/M6 & train station. Book a viewing now!
Council Tax band: B

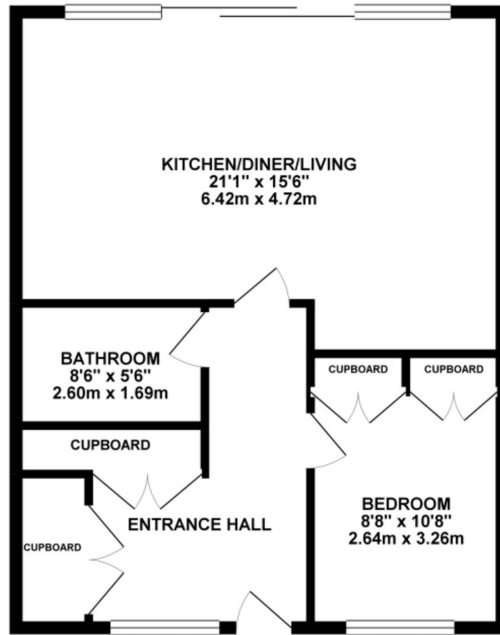
Tenure: Leasehold

EPC Energy Efficiency Rating: C

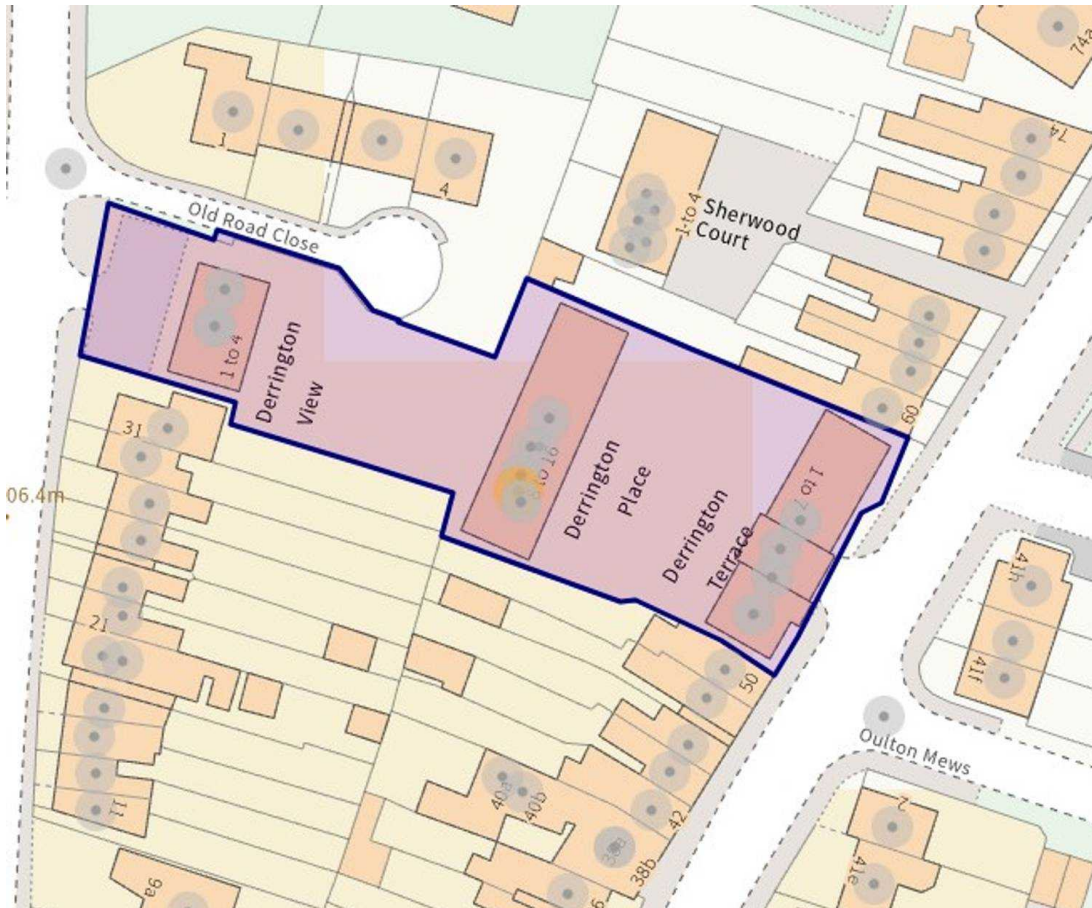
EPC Environmental Impact Rating: B



GROUND FLOOR 613.24 sq. ft.
(56.97 sq. m.)



TOTAL FLOOR AREA : 613.24 sq. ft. (56.97 sq. m.) approx.
While every attempt has been made to ensure the accuracy of the floorplan contained here, measurements of plots, windows, rooms and other items are approximate and no responsibility is taken for any error, omission or misstatement. The Buyer is advised to purchase only what is shown on the plan and to inspect the property prior to purchase. The services, systems and appliances shown here have not been tested and no guarantee is to be given regarding their availability or efficiency can be given.
Made with Metaplan 8/2014



You can include any text here. The text can be modified upon generating your brochure.