



## 4 The Crossings, Stone

£136,000 Leasehold



This two-bedroom ground-floor apartment has an open-plan living space that is light-filled and spacious. • The property is beautifully presented throughout, featuring two generous double bedrooms, a well-appointed bathroom with modern fixtures, and ample storage options. • Within a small, private residential development, the apartment includes communal gardens, allocated parking, and additional visitor spaces. • Ideally situated within easy reach of Stone town centre and key commuting links, this apartment provides convenient access to all necessary amenities. • This apartment is an ideal choice for first-time buyers, those looking to downsize, or investors seeking a reliable rental property.



At the Crossings, where life's paths converge, this ground-floor two-bedroom apartment awaits, perfectly poised at the crossroads of style and practicality. Step inside to discover beautifully presented interiors featuring open-plan living with a fitted kitchen, a light-filled living/dining area with a bay window, and a spacious family bathroom. Both double bedrooms offer ample space, with the master having built-in wardrobes. Additional perks include allocated parking, visitor spaces, and communal gardens, ensuring you're well-equipped no matter which road you travel. This versatile property stands at the intersection of opportunity, ideal for a first-time buyer, a downsizer, or as a savvy investment. Positioned within a small, private residential development, it offers effortless access to Stone town centre and key commuting links. Viewings are highly recommended—don't miss this pivotal moment to make it yours!



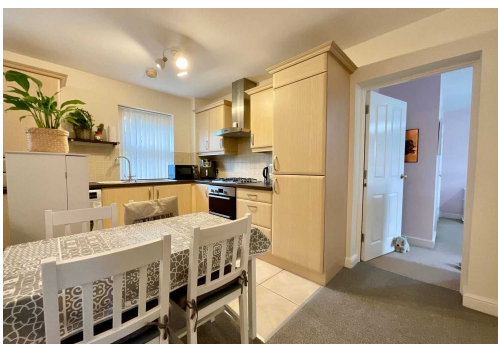
Perfectly located 2-bed ground-floor apartment at The Crossings. Stylish open-plan living, fitted kitchen, spacious bedrooms, allocated parking, communal gardens. Ideal for first-time buyers or investors. Close to Stone town centre and commuting links. Don't miss out!

Council Tax band: B

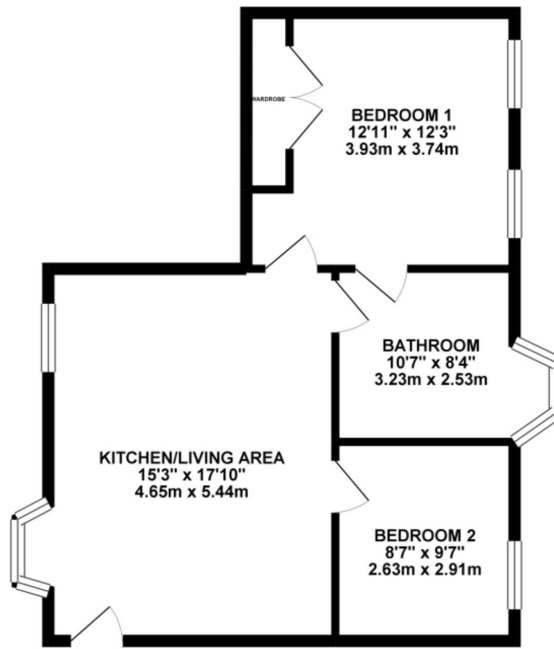
Tenure: Leasehold

EPC Energy Efficiency Rating: C

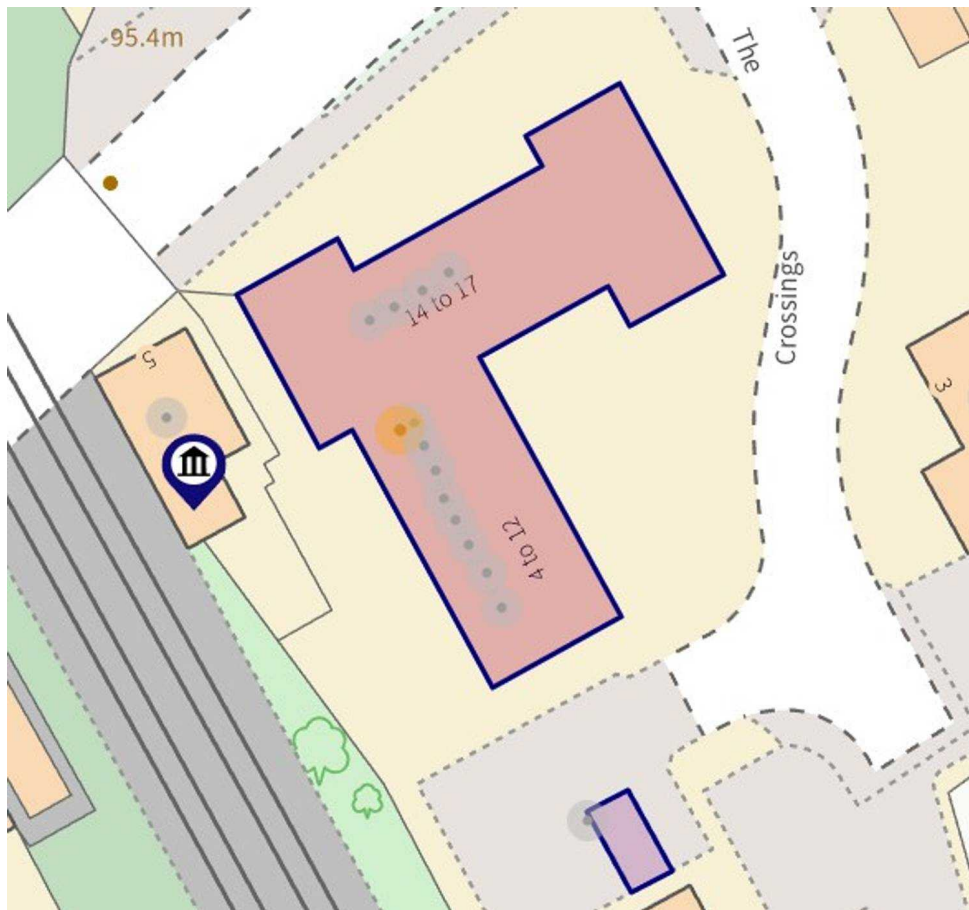
EPC Environmental Impact Rating: B



GROUND FLOOR 570.93 sq. ft.  
( 53.04 sq. m. )



TOTAL FLOOR AREA : 570.93 sq. ft. ( 53.04 sq. m. ) approx.  
Whilst every effort has been made to ensure the accuracy of the floorplan, contained here, measurements of doors, windows, rooms and any other items are approximate and no responsibility is taken for any error, omission or misstatement. This plan is for guidance purposes only and should be used as such by any prospective purchaser. The services, systems and appliances shown here are not listed and no guarantee is to their operability or efficiency can be given.  
Made with Metron 8/2014



You can include any text here. The text can be modified upon generating your brochure.

01785 814917