



## 36 Longhope Drive, Stone

£205,000 Freehold



This three-bedroom home is a blank canvas, freshly renovated with a brand-new kitchen and painted walls throughout, offering you the perfect opportunity to infuse your style. • The open-plan living and dining room is spacious and versatile, with dual aspects and sliding doors leading to a charming front patio. • The brand-new kitchen not only provides ample space for all your appliances but also includes a flexible area that can serve as a dining space or a snug/family area. • A front garden and a mix of patio and lawn areas in the rear garden. Plus, the extra plot to the right of the house offers further potential for a play area, or whatever you envision. • Within walking distance of Stone's amenities and offering excellent commuter links, and the convenience of easy access to everything you need.



Your long-awaited dream home on Longhope Drive. Have you been long hoping for the perfect place to call home? Look no further! On Longhope Drive, this extended three-bedroom end terraced house in Stone is a blank canvas, awaiting your creative touch. Recently renovated with a brand-new kitchen and freshly painted walls throughout, this spacious home invites you to design the space of your dreams. Step into the porch and through to the entrance hall, where the journey of your new home begins. The generous open-plan living and dining room boasts dual aspects and sliding doors that lead out to a charming front patio. The brand-new kitchen offers ample space for all your appliances and features a generous sized area that could serve as a dining space or a family/snug area. On the ground floor, you'll also find a convenient WC with generous storage space, making everyday living that much easier. Upstairs, discover three well-sized bedrooms, each offering a peaceful retreat for the end of the day. The family bathroom is complete with a shower over the bath. The exterior of this delightful home is equally impressive. The immaculately maintained, colourful front garden welcomes you with a path leading to the patio doors off the living room. To the rear, enjoy a blend of patio and lawn areas. Additionally, the expansive plot to the right of the house offers further potential for your outdoor aspirations, be it a garden extension or a play area for children. Situated within walking distance of Stone's vibrant amenities and offering excellent commuter links. Have you been long hoping for a home that offers both space and opportunity? Look no further! Call us now to arrange a viewing and start envisioning your future on Longhope Drive.



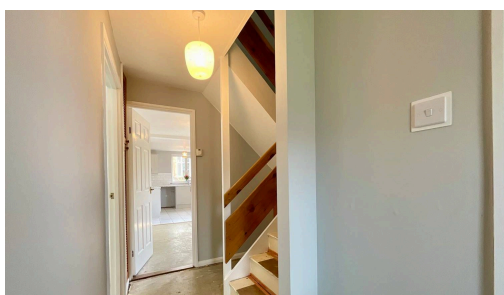
Your dream home on Longhope Drive awaits! 3-bed end-terrace in Stone with brand-new kitchen, spacious living area, ample storage, and vibrant front garden. Excellent location near amenities and commuter links. Call now to view!

Council Tax band: B

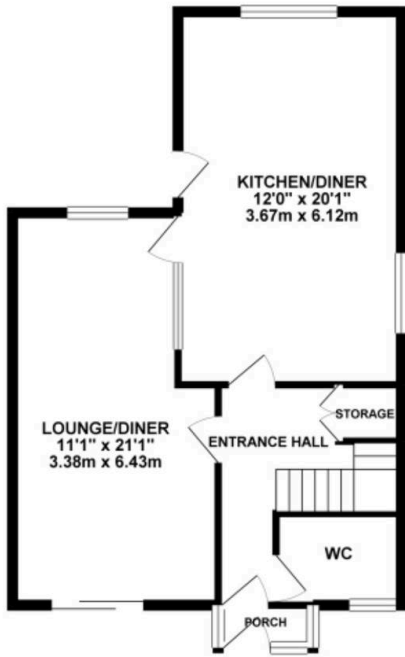
Tenure: Freehold

EPC Energy Efficiency Rating: C

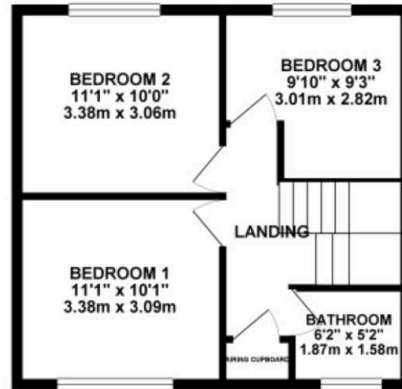
EPC Environmental Impact Rating: D



GROUND FLOOR 583.71 sq. ft.  
( 54.23 sq. m. )

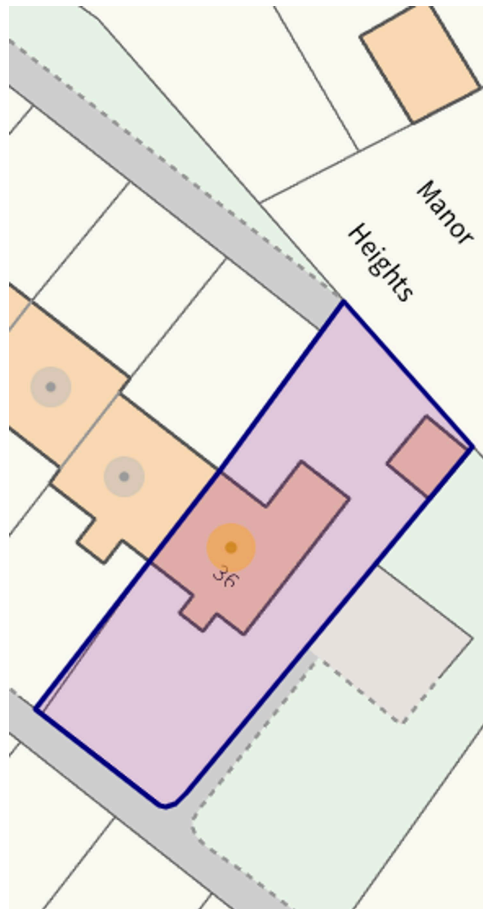


1ST FLOOR 421.98 sq. ft.  
( 39.20 sq. m. )



TOTAL FLOOR AREA : 1005.69 sq. ft. ( 93.43 sq. m. ) approx.

Whilst every attempt has been made to ensure the accuracy of the floorplan contained here, measurements of doors, windows, rooms and any other items are approximate and no responsibility is taken for any error, omission or mis-statement. This plan is for illustrative purposes only and should be used as such by any prospective purchaser. The services, systems and appliances shown have not been tested and no guarantee as to their operability or efficiency can be given.  
Made with Metropix ©2024



You can include any text here. The text can be modified upon generating your brochure.

01785 814917