



Greenways Southwood, Baldwins Gate

£485,000 Freehold



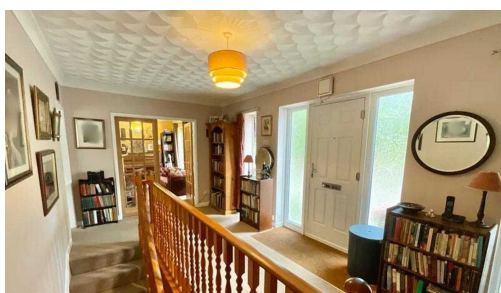
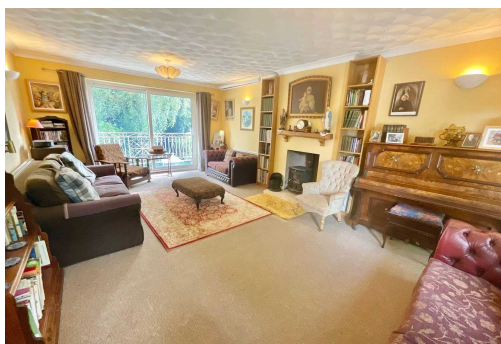
This five-bedroom home offers generous space for family living and entertaining. The living room, dining room, and kitchen are all large and versatile with stunning views of the garden and woodland. • Greenways is equipped with a Tesla Powerwall, installed last year, which stores energy from solar panels or the grid, promoting eco-friendly living and reducing electricity bills. • The home's unique split-level design adds charm and functionality. The lower level includes spacious bedrooms with garden access, this layout is perfect for both privacy and communal living. • The garden is a true sanctuary with a mix of lawn and patio areas. The surrounding woodland attracts wildlife, enhancing the property's serene and green atmosphere. • Located in Baldwin's Gate, Greenways offers the best of both worlds, a peaceful, rural setting close to Newcastle-under-Lyme's amenities, excellent schools, and commuter links.

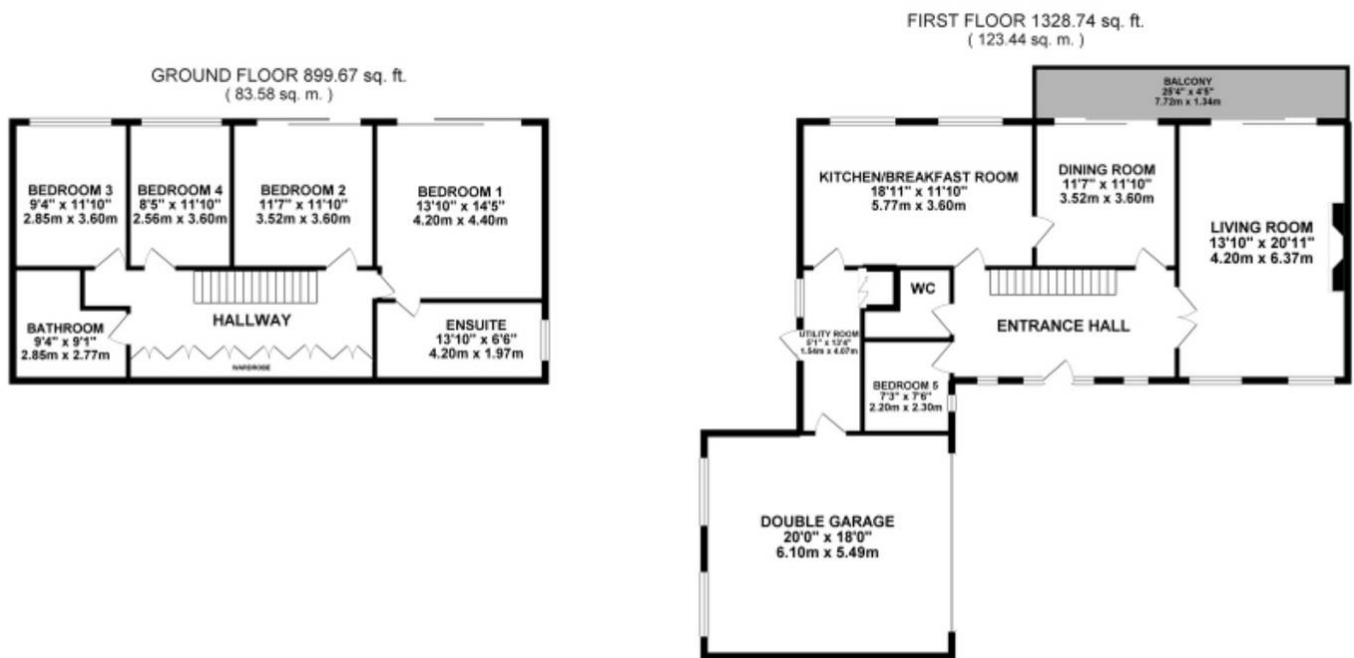


We're giving the green light to Greenways, a stunning five-bedroom detached home in Baldwin's Gate that's a dream come true for families. With its spacious bedrooms and generous garden, there's plenty of room for everyone to enjoy and relax. Pull up onto the driveway which has ample parking for 5+ cars and be welcomed by this, a green oasis. As you enter through the front door into the inviting entrance hall, step through the glass French doors on your right into a spacious living area, this room includes a multi-fuel wood burner and additional patio doors that lead onto the balcony, perfect for soaking in the serene views. Adjacent to the living room is a versatile dining room, currently used as a study, with a convenient connecting door to the kitchen. The dining room also features patio doors to the balcony, offering lovely views of the garden and surrounding woodland. The kitchen is a great space with plenty of room for the whole family. It includes a one-and-a-half bowl sink, draining board, double oven, and plumbing ready for a dishwasher. A connected utility room provides access to the back garden and a spacious double garage with an electric door. The garage houses a Tesla Powerwall, installed just last year, making Greenways an eco-friendly haven. This compact home battery stores energy generated by solar or from the grid, helping you save on electricity bills and more. On the first floor, you'll also find a good-sized cloakroom and a single bedroom, which can double as a study. Now, let's head downstairs, yes, downstairs! This home's unique layout adds to its charm. The lower level features a generous hallway with a wall of fitted wardrobes, a storage enthusiast's dream! The master bedroom is a spacious retreat with sliding doors to the garden and an ensuite having both a standalone jacuzzi bath, twin sinks and shower. Another double bedroom on this level also has sliding doors to the garden, creating a great light-filled space. The final two bedrooms are well-sized for double beds and feature large windows with beautiful garden views. A large family bathroom completes the downstairs, with bright tiles, a standalone bath, and a single shower. Outside, the garden is a beautiful sanctuary. With a mix of lawn and patio areas, it's perfect for relaxation or entertaining. The surrounding woodland attracts magical wildlife, living up to Greenways' name. With double-glazed windows, a Tesla Powerwall, a new roof along with 24 exclusively owned solar panels installed last year, and a boarded and insulated loft make this house perfect all year round, enjoy the beautiful garden during the warmer months and snuggle up by the wood burner on those colder nights. Located on the outskirts of Baldwin's Gate, on the exclusive Madeley Parkwood development, Greenways offers not only a great family home but also a prime location. Close to Newcastle-under-Lyme, you're never far from excellent schools, amenities, and commuter links, while still being able to enjoy part rural living. Make Greenways Southwood your green paradise today and book a viewing!



Stunning 5-bed detached home in Baldwin's Gate, perfect for families. Spacious rooms, generous garden, balcony with serene views. Eco-friendly features include Tesla Powerwall. Convenient location near Newcastle-under-Lyme. Book a viewing today!
Council Tax band: G
Tenure: Freehold
EPC Energy Efficiency Rating: C
EPC Environmental Impact Rating:





TOTAL FLOOR AREA : 2228.42 sq. ft. (207.03 sq. m.) approx.

Whilst every attempt has been made to ensure the accuracy of the floorplan contained here, measurements of doors, windows, rooms and any other items are approximate and no responsibility is taken for any error, omission or mis-statement. This plan is for illustrative purposes only and should be used as such by any prospective purchaser. The services, systems and appliances shown have not been tested and no guarantee as to their operability or efficiency can be given.
Made with Metropix 62024



You can include any text here. The text can be modified upon generating your brochure.