



Flat 59, Walton Grange, Stafford Road

£110,000 Leasehold



Just moments from Stone Town Centre, this home offers fantastic walkability to local amenities, shops, and excellent commuter links by road or rail. • The apartment features two bedrooms with leafy outlooks and a spacious living and dining room with dual aspect windows. • Enjoy tree-top views from the separate kitchen, adding a peaceful backdrop for your daily routines. • With two walk-in storage cupboards, you'll have ample space to keep your home organized. • Benefit from the security of a new intercom system and off-street shared parking, along with communal grounds perfect for leisurely walks.



Wonderful Walton Grange—your walkable home in Stone! This two-bedroom, first-floor apartment offers a wonderful opportunity to step onto the property ladder or expand your property portfolio. Walton Grange is a winning choice, with its welcoming atmosphere and walking distance to Stone Town Centre, excellent commuter links by road or rail, local amenities, and wonderful country walks—all on the doorstep. Inside, you'll find two good sized bedrooms with leafy outlooks. The apartment offers ample storage, with not one, but two walk-in storage cupboards. The living and dining room is wonderfully spacious, with dual aspect windows that wash the room with natural light. The separate kitchen, with its tree-top views, is a delightful place to whip up your favourite meals and a spacious family bathroom, complete with a shower over the bath. Outside, enjoy the peace of mind offered by security doors and a new intercom system—swanky and secure! Plenty of off-street shared parking is available, along with communal grounds that are perfect for a walk and a breath of fresh air. What are you waiting for at Walton Grange? This is your chance to weave a wonderful new chapter. Call us to arrange a viewing today. Don't wait—embrace Walton Grange!

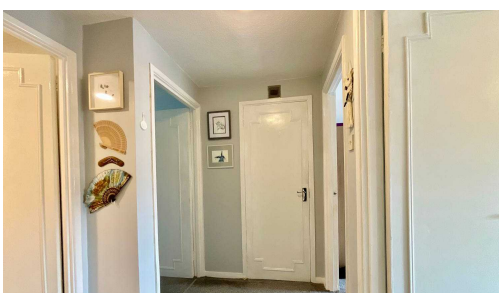


"Charming 2-bed apartment in Walton Grange, Stone. Ideal for first-time buyers or investors. Close to amenities, transport links, and country walks. Spacious living/dining room, ample storage, secure parking, communal grounds. Book a viewing now!"
Council Tax band: A

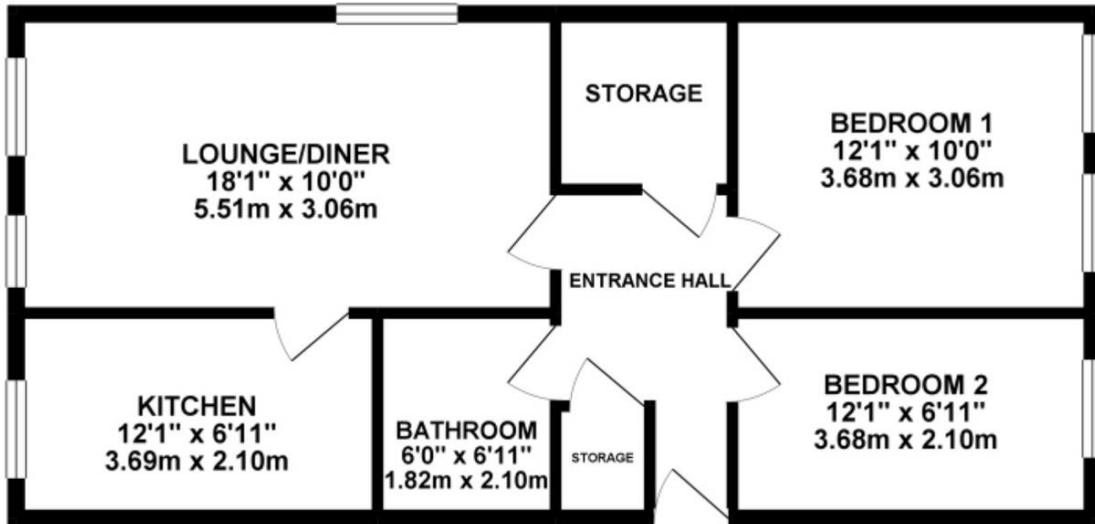
Tenure: Leasehold

EPC Energy Efficiency Rating: C

EPC Environmental Impact Rating:

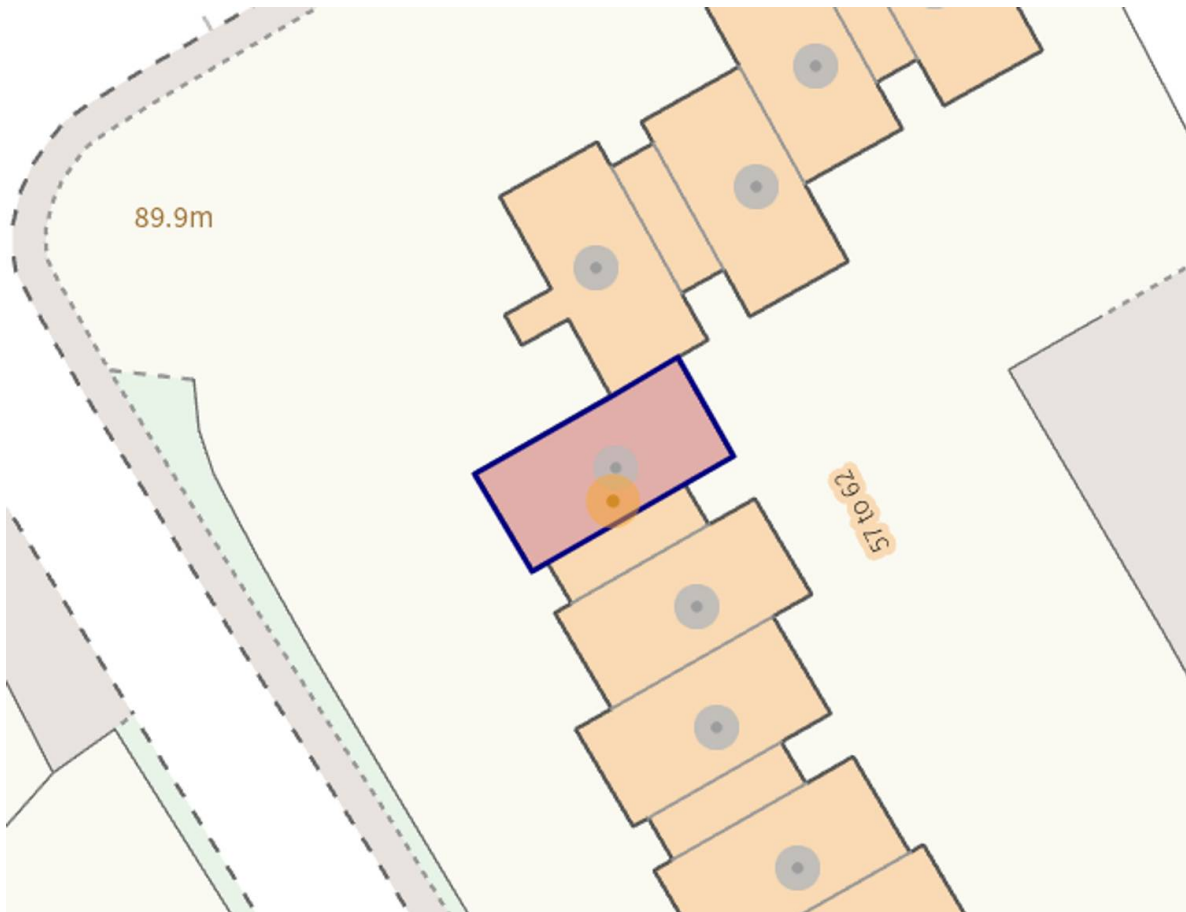


GROUND FLOOR 610.09 sq. ft.
(56.68 sq. m.)



TOTAL FLOOR AREA : 610.09 sq. ft. (56.68 sq. m.) approx.

Whilst every attempt has been made to ensure the accuracy of the floorplan contained here, measurements of doors, windows, rooms and any other items are approximate and no responsibility is taken for any error, omission or mis-statement. This plan is for illustrative purposes only and should be used as such by any prospective purchaser. The services, systems and appliances shown have not been tested and no guarantee as to their operability or efficiency can be given.
Made with Lettopix ©2024



You can include any text here. The text can be modified upon generating your brochure.