

## 20 Churchill Avenue, Stoke-On-Trent

£240,000 Freehold



A well presented two-bedroom bungalow positioned at the end of a quiet cul-de-sac on Churchill Avenue in Trentham. • A spacious living/dining room, stylish kitchen, two double bedrooms, wet room, and plenty of storage. • With a fully paved rear garden and a well-maintained interior, this bungalow is ideal for those who prefer to spend more time enjoying their home and less time maintaining it. • Positioned in Trentham, close by to local shops, amenities and bus routes. • With no upward chain, this is a huge plus for anyone eager to settle into their new home.





Welcome to Churchill Avenue, where this cosy two-bedroom bungalow offers a blend of comfort and charm, just like its namesake. Tucked away at the end of a quiet cul-de-sac, this home has been lovingly cared for and is ready for you to move in with no upward chain. Step inside, and you'll find a warm and inviting living/dining room at the heart of the home. With space to lounge and dine, this room is perfect for relaxing evenings or meals with friends. The large rear window lets in plenty of natural light and gives you a lovely view of the garden—ideal for those who appreciate a bit of greenery without too much upkeep. The kitchen is smart and modern, equipped with integrated appliances and easy access to the rear garden. At the front of the bungalow, you'll find two comfortable double bedrooms. One comes with fitted wardrobes, offering plenty of storage space for your belongings. And if storage is a concern, this home has you covered with a handy storage cupboard, loft access, and a large airing cupboard in the bathroom. The bathroom has been cleverly designed as a wet room, featuring a spacious walk-in shower. Outside, you'll appreciate the low-maintenance appeal of the property. The front garden adds a touch of charm and curb appeal, while the driveway leads to a single garage—perfect for storage or a small workshop. The rear garden is fully paved, making it easy to maintain and offering potential for a few colourful flower pots or a quiet spot to relax. Located in the popular area of Trentham, Churchill Avenue puts you within walking distance of local shops, Trentham Gardens, and convenient bus routes. It's a straightforward, no-nonsense home in a prime location, ideal for those looking for a peaceful and practical place to settle down. Call us today to arrange a viewing—this Churchill Avenue bungalow might just be the cosy retreat you've been looking for.

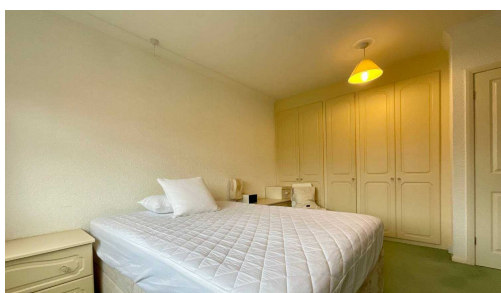


Cosy 2-bed bungalow on Churchill Ave. Quiet cul-de-sac. Well-maintained, no upward chain. Spacious living/dining area, modern kitchen, 2 double bedrooms, wet room bathroom. Low-maintenance front & rear gardens, single garage. Ideal Trentham location near shops & bus routes. Viewing recommended!  
Council Tax band: C

Tenure: Freehold

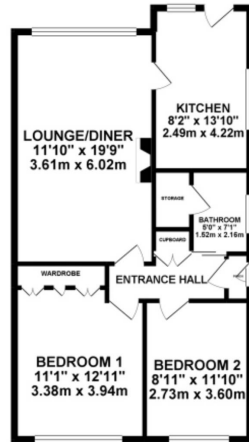
EPC Energy Efficiency Rating: D

EPC Environmental Impact Rating:





GROUND FLOOR 831.21 sq. ft.  
( 77.22 sq. m. )



TOTAL FLOOR AREA : 831.21 sq. ft. ( 77.22 sq. m. ) approx.  
Whilst every attempt has been made to ensure the accuracy of the floorplan contained herein, measurements of doors, windows, stairs and any other items are approximate and no responsibility is taken for any error apparent or not. This plan is for illustrative purposes only and should be used as such by any prospective purchaser. The services, systems and appliances shown have not been tested and no guarantee is to their operation or efficiency can be given.  
Made with Metron 8/2/04



You can include any text here. The text can be modified upon generating your brochure.

01785 814917