



31 Joules Court Crown Street, Stone

£185,000 Leasehold



Second-floor, three-bedroom apartment in a purpose-built development with lift and secure door access. • Spacious lounge/dining area, with double doors opening to the kitchen, two double bedrooms, and a third smaller room. • A community to be a part of with lots of entertainment programs and facilities on site. • In the heart of Stone Town Centre, meaning a stroll to all nearby amenities, including shops and local bus routes. • No upward chain; make it ready whenever you are.



We think we might have you jumping for joy because we have found you a lovey spot at Joules Court, which is in the heart of Stone and the abundance it has to offer, including monthly farmers markets, independent shops, restaurants, and a bustling community, all just a short stroll away from this second-floor three-bedroom apartment. The building itself is a very safe space with secure door access and its own private parking for residents. Using either stairs or the communal lift, there is easy access to enter the apartment through an entrance hall. The apartment comprises a great-sized living room with a featured walk-in bay window, giving you floor-to-ceiling views over the town's roof tops. The kitchen has double doors, which you can leave open into the living room if you enjoy an open-plan feel. In the kitchen, there is an eye-level built-in electric oven and hob, again offering views over the town. This generously sized apartment benefits from two double bedrooms, one including a mirrored fitted wardrobe, and a third smaller bedroom, which is a versatile space and would be a fabulous study. With the first bathroom having a shower over the bath, this apartment also includes a separate walk-in shower room, giving you the best of both worlds: a soak in the bath or a refreshing shower. The choice is yours! For your storage needs, there is a great-sized cupboard in the hall. Throughout the apartments are safety pull cords, so you can rest easy knowing someone is not far away to offer a helping hand. Joules Court also offers a fantastic communal lounge, laundry room, shared kitchen, and garden for all the residents to use at their leisure. Age restrictions apply, and to find out more, don't hesitate, but jump to that phone to call James Du Pavey today!

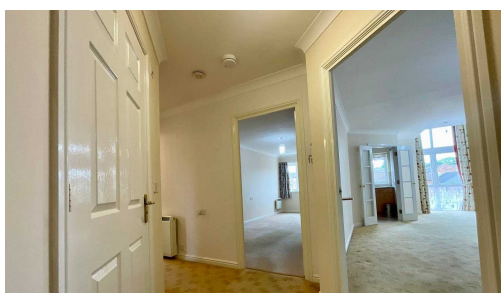


Charming 3-bed apartment in Joules Court, Stone. Enjoy town views, secure parking, communal facilities, and vibrant community. Age restrictions apply. Call James Du Pavey today!
Council Tax band: D

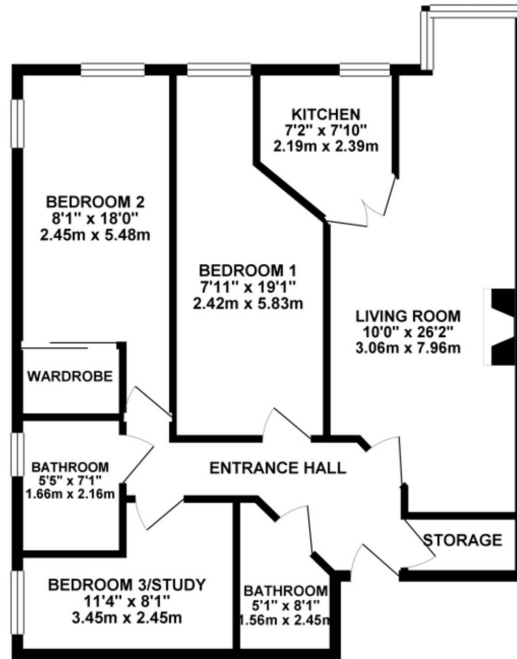
Tenure: Leasehold

EPC Energy Efficiency Rating: B

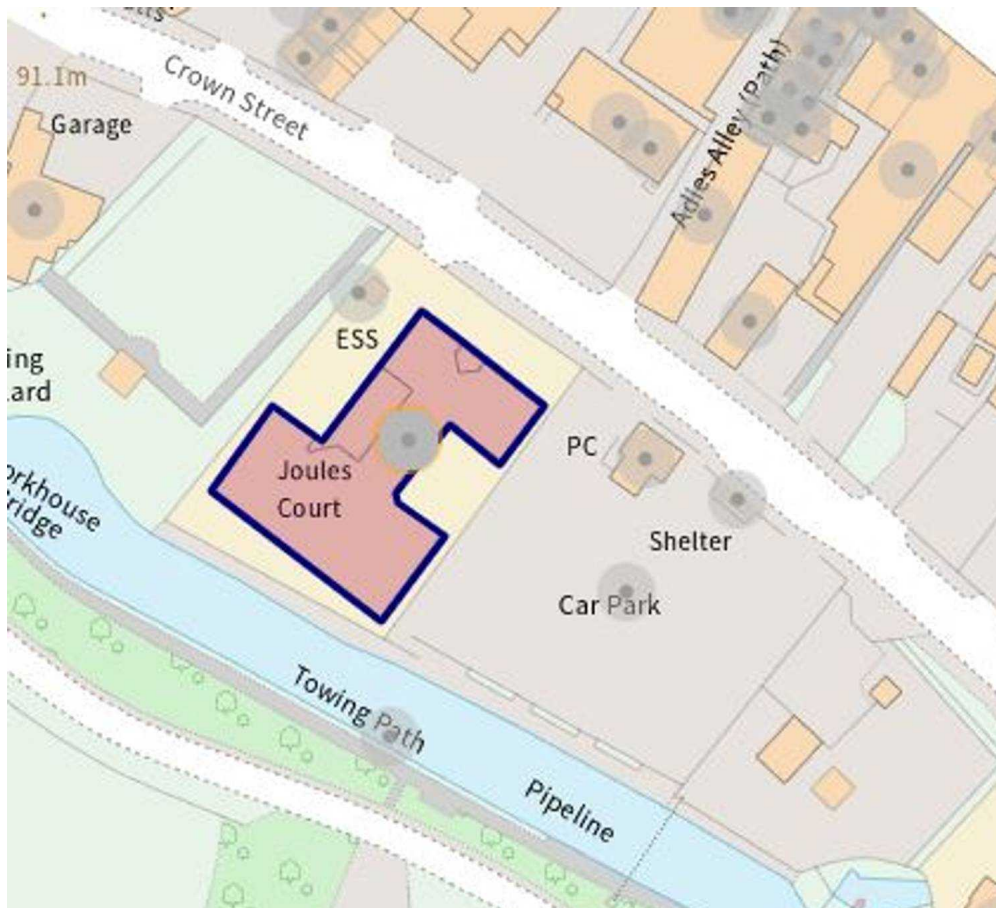
EPC Environmental Impact Rating:



GROUND FLOOR 763.92 sq. ft.
(70.97 sq. m.)



TOTAL FLOOR AREA: 763.92 sq. ft. (70.97 sq. m.) approx.
While every effort has been made to ensure the accuracy of the floorplan contained herein, measurements of doors, windows, stairs and any other items are approximate and the responsibility is taken for any error, omission or misstatement. This plan is for guidance only and should be used as a guide to any prospective purchaser. The services, systems and appliances shown have not been tested and no guarantee is given for their operability or efficiency can be given.
Made with Mapogen ©2014



You can include any text here. The text can be modified upon generating your brochure.

01785 814917