



21 Lichfield Street, Stone

£199,950 Freehold



Central Location - Just a few steps from shops, restaurants, and pubs in Stone's vibrant high street. • Spacious Living - Flexible rooms, including three double bedrooms and a large kitchen. • Unique Character - Charming, quirky features throughout. • Potential - A unique opportunity to make it your own. • Commuter Links - Easy access to A34/A500 and M6.

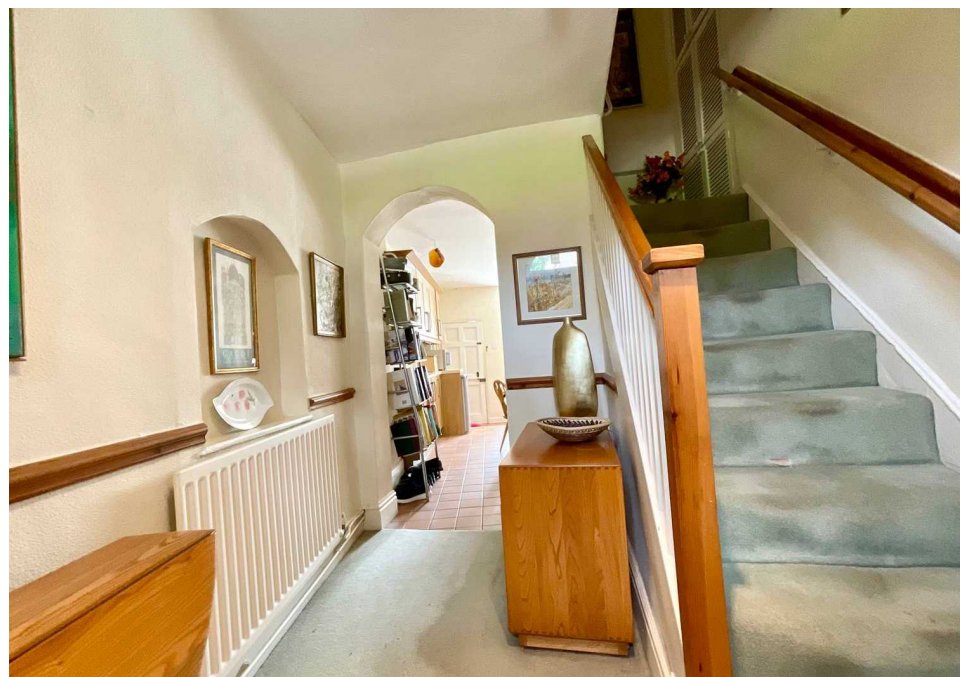


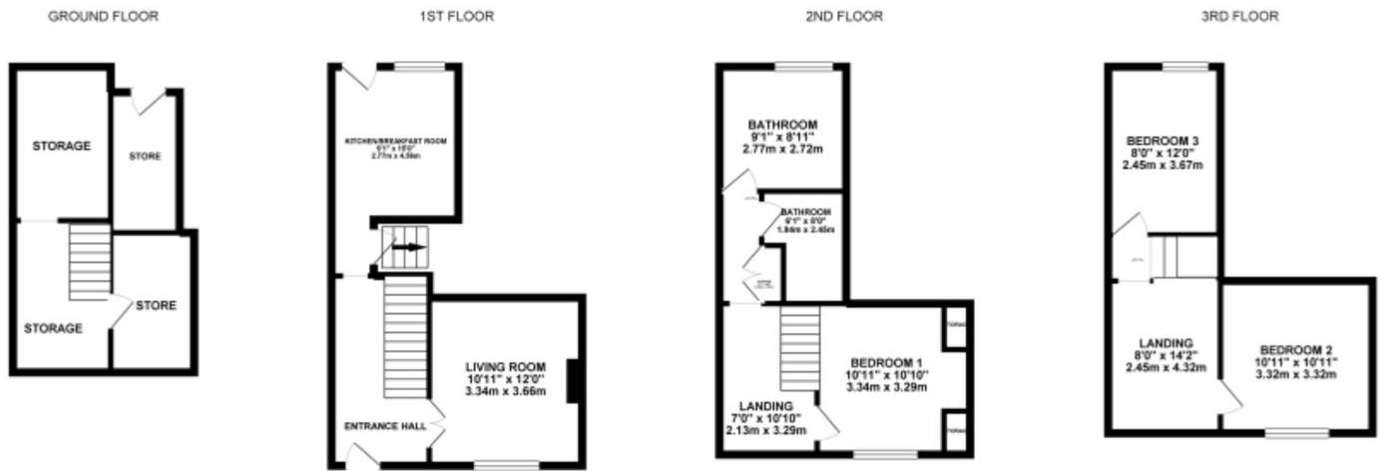
Hear Ye! Hear Ye! The town crier is calling you to come and explore what's on offer on Lichfield Street – a Grade II listed town house that's all about location, location, location. Spacious, full of character, and just a 'stone's throw' from the heart of Stone, this home offers unparalleled convenience with shops, pubs, restaurants, and local amenities just a stroll away. Perfect for those seeking vibrant urban living, this quirky and characterful property offers flexible living accommodation across three storeys. Loved by its current owner for many years, it's now ready for its next chapter. Upon entering, you're greeted by a spacious hallway leading to a cosy living room with charming outlook towards St Michael & St Wulfad's Church. The generous breakfast kitchen at the rear offers ample space for appliances and a table for entertaining. On the first floor, you'll find two bathrooms and a light-filled master bedroom with fitted storage and lovely leafy views of the church. Heading to the third floor, there are two additional double bedrooms, perfect for versatile use. The galleried landings add an extra touch of charm and space to furnish as you desire. Bonus features include a large cellar converted into a practical office, utility space, and valuable storage. Outside, enjoy a shared storage room and a communal seating area. Hear Ye! Hear Ye! Don't miss the chance to make this unique town house in a prime location your new home!



Council Tax band: C

Tenure: Freehold





Whilst every attempt has been made to ensure the accuracy of the floorplan contained here, measurements of doors, windows, rooms and any other items are approximate and no responsibility is taken for any error, omission or mis-statement. This plan is for illustrative purposes only and should be used as such by any prospective purchaser. The services, systems and appliances shown have not been tested and no guarantee as to their operability or efficiency can be given.
Made with Metropix ©2024



You can include any text here. The text can be modified upon generating your brochure.