



Smithy Cottage Middleton Green, Leigh

£485,000 Freehold



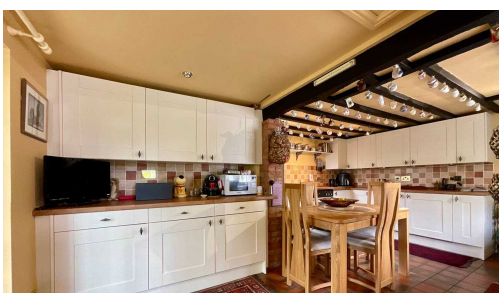
Charming and classic country living in this two-bedroom cottage with exposed beams throughout and cosy log burners in both reception rooms. • Smithy Cottage offers views of the surrounding countryside, providing a serene space to relax and enjoy nature year-round. • A spacious ground floor with a beautiful breakfast kitchen, two reception rooms, and a clever upstairs layout with a walk-in wardrobe leading to a versatile hobby room. • The well-maintained garden is a peaceful space with lovely views over the fields—perfect for gardening, relaxing, or outdoor dining. • Lovingly maintained, Smithy Cottage makes escaping to the countryside easy and stress-free.



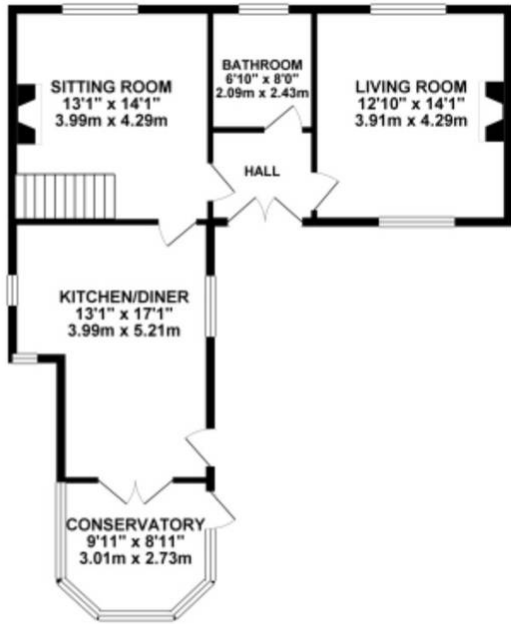
If you've ever dreamed of leaving behind the city's hustle and finding peace among rolling hills and quiet fields, it's time to Escape to the Cottage! From the moment you step inside Smithy Cottage, you'll be embraced by its rustic charm, with exposed beams throughout and a welcoming warmth that immediately puts you at ease. The extended ground floor offers plenty of space to breathe, entertain, and relax. Picture starting your day in the gorgeous breakfast kitchen, where sunlight pours in, filling the room with a golden glow. The kitchen flows effortlessly into a bright conservatory, the perfect spot to enjoy your morning coffee or an evening glass of wine while soaking up uninterrupted views of the serene countryside. This is where you'll truly feel the meaning of country living—the peace, the quiet, and the simple joy of watching the world go by. Smithy Cottage continues to captivate with its two spacious reception rooms, each with a cosy log burner. Imagine curling up with a good book as the fire crackles and the wind whispers outside. The downstairs main bathroom features a luxurious corner bath —perfect for unwinding after a day of exploring the countryside. Upstairs, the charm continues with two delightful double bedrooms, each with its own unique appeal. One bedroom opens directly from the stairs, creating a wonderfully quirky layout that adds character to the cottage. A walk-in wardrobe leads you to a versatile hobby room, filled with natural light from two skylights. Whether you see this space as a cosy reading nook, craft room, or home office, it offers endless possibilities to suit your lifestyle. Off the second bedroom, a private bathroom with a walk-in shower and panoramic countryside views awaits. Outside, Smithy Cottage boasts a beautifully maintained garden. With vibrant flower beds, lush lawns, and peaceful spots to relax and enjoy the sunshine, the garden is an escape all its own. Though Smithy Cottage is a semi-detached property, it feels wonderfully private and secluded, thanks to its clever design and layout. The spacious ground floor ensures you never feel crowded, while the upper floor provides a cosy, intimate retreat at the end of the day. Plus, with private gates, ample parking for several vehicles, and a detached garage, convenience is at your doorstep. Located in Middleton Green, a charming village nestled between Tamworth and Lichfield, Smithy Cottage offers endless opportunities to embrace the country lifestyle. Properties like this are rare, offering a unique chance to immerse yourself in the beauty and peace of the Staffordshire countryside. Don't miss out on the opportunity to escape to the cottage and make Smithy Cottage your very own country retreat. Call us today to arrange a viewing and begin your new adventure. Your escape to cottage life begins here!



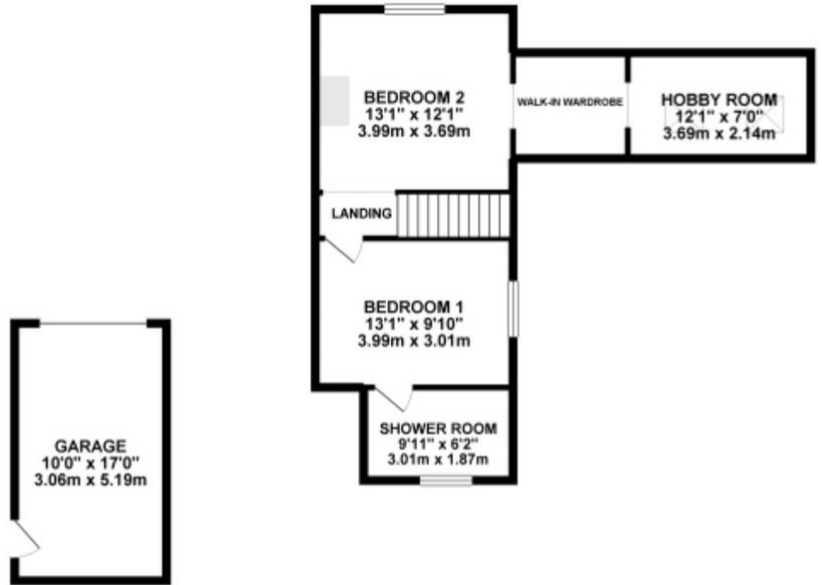
Escape to the Cottage at Smithy Cottage in Middleton Green. Rustic charm with exposed beams, spacious rooms, conservatory, log burners, 2 double bedrooms, hobby room, private garden, parking. Peaceful rural living near Tamworth and Lichfield. Book a viewing today!
Tenure: Freehold



GROUND FLOOR 912.62 sq. ft.
(84.79 sq. m.)



1ST FLOOR 525.76 sq. ft.
(48.84 sq. m.)



TOTAL FLOOR AREA: 1438.38 sq. ft. (133.63 sq. m.) approx.

Whilst every attempt has been made to ensure the accuracy of the floorplan contained here, measurements of doors, windows, rooms and any other items are approximate and no responsibility is taken for any error, omission or mis-statement. This plan is for illustrative purposes only and should be used as such by any prospective purchaser. The services, systems and appliances shown have not been tested and no guarantee as to their operability or efficiency can be given.
Made with Metropix ©2024



You can include any text here. The text can be modified upon generating your brochure.