



4 Fir Tree Cottages Rushy Lane, Barthomley

£270,000 Freehold



Excellent opportunity to obtain a home in a popular village location which seldom become available. • Are you looking for a property to put your own stamp on? This cottage is the perfect proposition. • The downstairs accommodation offers an open plan kitchen diner, spacious lounge and bathroom. • The property offers four bedrooms and bags of period features. • Good sized wrap around garden leading to a brook.



Welcome to this hidden gem of a property in the heart of a popular village location! It's not often that homes in this neck of the woods come up for sale, so consider yourself as lucky as a four-leaf clover to have stumbled upon this excellent opportunity.

The property offers an open plan kitchen and dining area, perfect for whipping up your favourite meals or entertaining guests. The lounge is a good size. Need a quick freshen up? No problem, as there's a convenient bathroom on the ground floor for your convenience.

Venture upstairs and discover four bedrooms waiting to be personalised to your liking. Maybe you're envisioning a dreamy master suite, a vibrant home office, or a cosy guest room - the possibilities are endless. Plus, with plenty of characterful period features throughout the property, you'll be surrounded by a touch of history and charm at every turn.

Outside, the property boasts a good-sized wrap-around garden, offering plenty of potential for green-thumbed enthusiasts to create their own outdoor oasis. Whether you're dreaming of a lush vegetable patch, a sunny spot for al-fresco dining, or simply a peaceful space to enjoy the fresh air, this garden has the space for it all. Follow the garden path and you'll find yourself at a tranquil brook, creating a soothing backdrop to your daily life.

In summary, this property presents an excellent opportunity for those seeking a home with character, space, and a touch of seclusion. Don't let this rare chance slip through your fingers - take the reins and transform this cottage into your own personal sanctuary. Whether you're a first-time buyer, a growing family, or simply someone looking for a change of scenery, this charming abode has something to offer everyone.

Location

Barthomley is situated on the Cheshire and Staffordshire border. The name Barthomley is said to derive from Bertamlegh meaning 'a woodland clearing of the dwellers at a place called Brightmead or Brightwell'.

Located only a short distance from the towns of Crewe, Nantwich and Alsager where local amenities including shops and facilities, educational and healthcare needs are within easy reach. Barthomley benefits with efficient access to the A500 and M6 motorway network, while Crewe railway station is easily accessible and provides direct routes to major cities across the country. Leisure facilities are well covered in the area including, many local golf courses including the PGA championship course at Wychwood Park and local village Bowling Green.



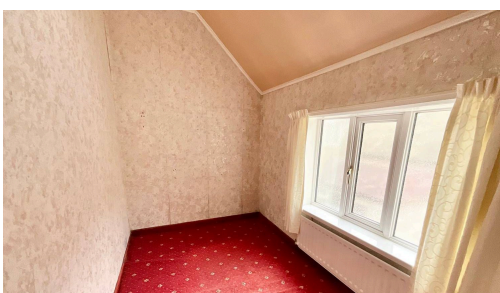
Rare opportunity to own a characterful property in a popular village location. Boasts open plan kitchen, four bedrooms, period features, and a spacious garden with brook. Close to towns, amenities, A500/M6, and leisure facilities. Perfect for first-time buyers or families seeking a tranquil retreat.

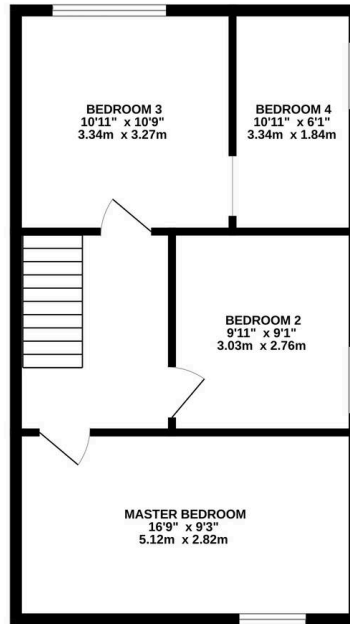
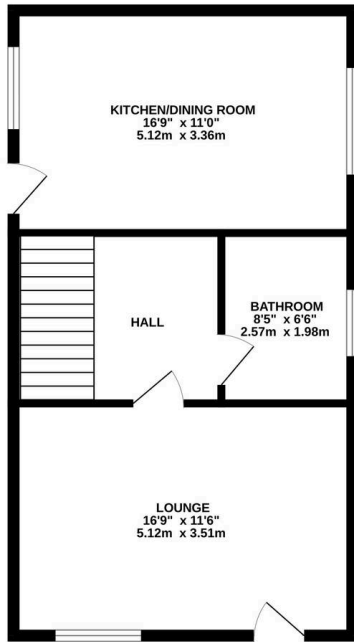
Council Tax band: D

Tenure: Freehold

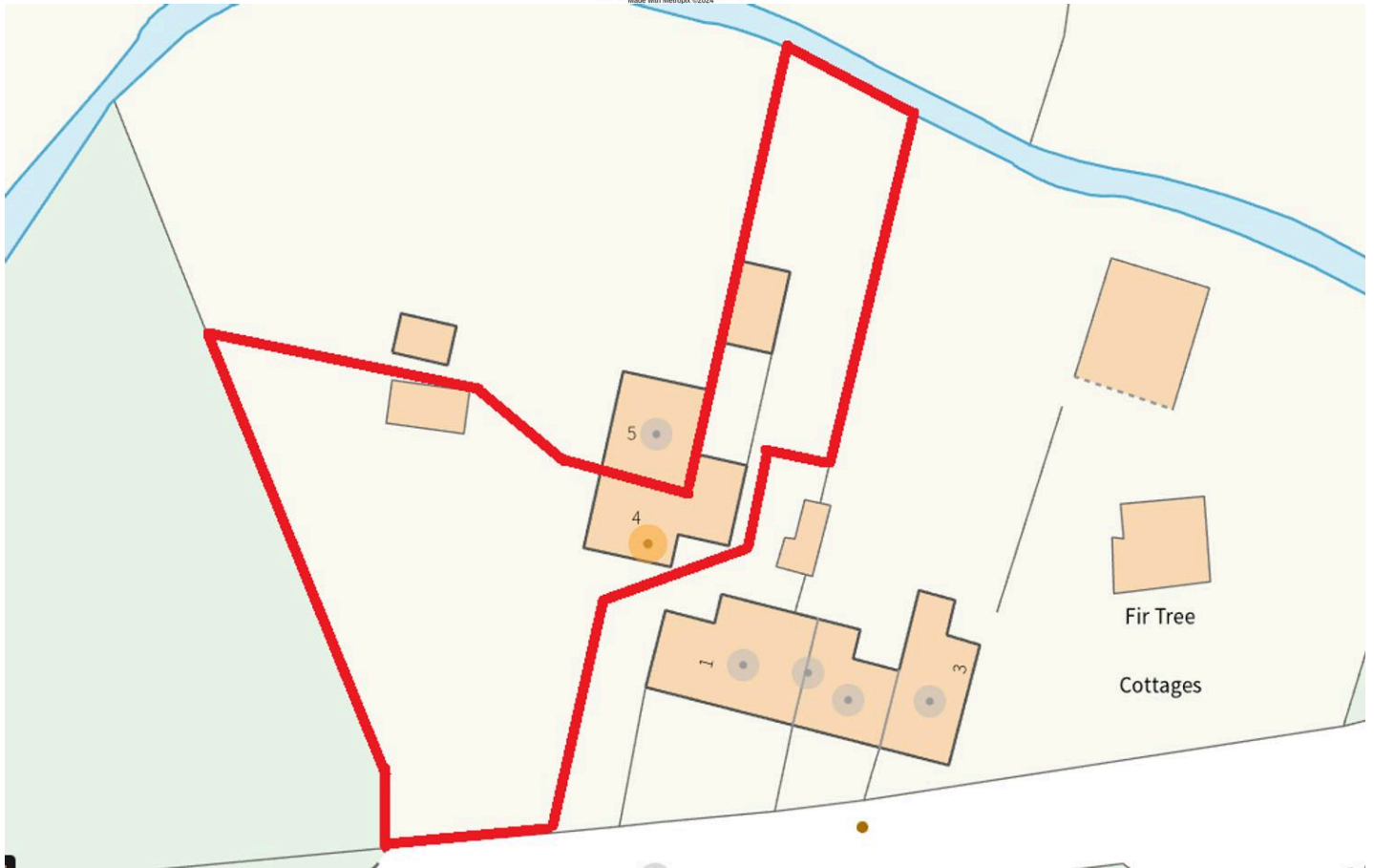
EPC Energy Efficiency Rating: E

EPC Environmental Impact Rating: F





TOTAL FLOOR AREA - 1025 sq. ft. (95.3 sq. m.) approx.
 Whilst every attempt has been made to ensure the accuracy of the floorplan contained here, measurements of doors, windows, rooms and any other items are approximate and no responsibility is taken for any error, omission or mis-statement. This plan is for illustrative purposes only and should be used as such by any prospective purchaser. The services, systems and appliances shown have not been tested and no guarantee as to their operability or efficiency can be given.
 Made with Metropix ©2024



You can include any text here. The text can be modified upon generating your brochure.