



The Mews Court Chase Lane, Tittensor

£700,000



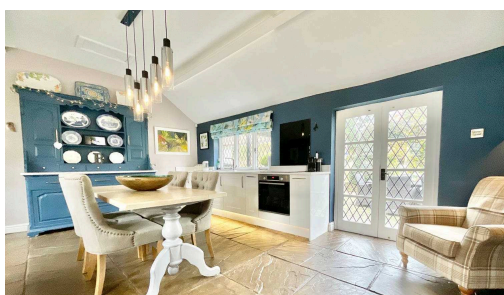
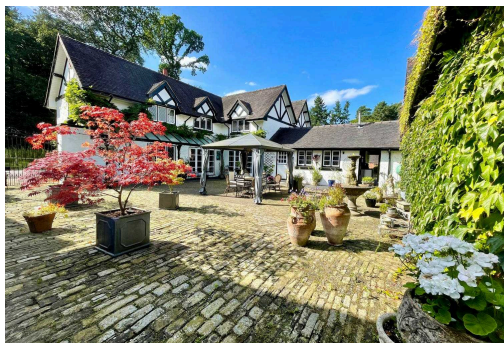
Stunning four bedroom period link detached home with a luscious green garden and its own courtyard. • Substantial master suite and en suite making it the perfect place for any king or queen to relax. • Once used as the stables to the neighbouring estate which was built for the First Duke of Sutherland, the home is packed full of history. • Sleek and modern kitchen area along with stunning oak beams and diamond leaded windows running throughout creating the seamless blend of the 1800's and modern day times. • Perfectly situated on Chase Lane, you are just a short drive to Stone's vibrant town centre, excellent schooling options and amazing commuter links via road, rail and bus.



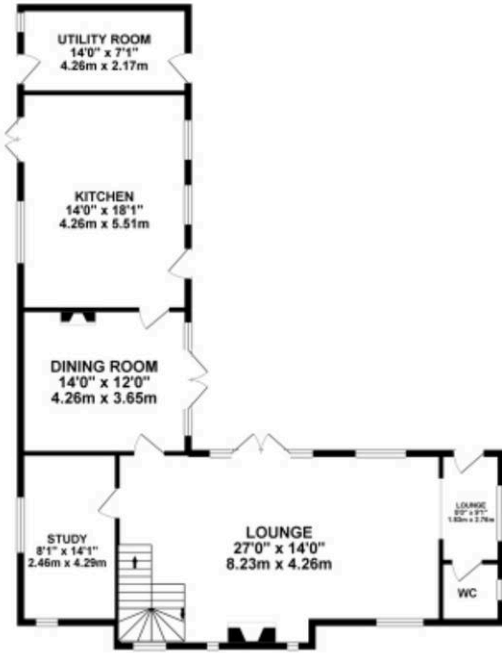
Here Ye Here Ye! Let me announce to you all the beautiful four bedroom, link-detached home on Chase Lane that is plucked straight from the 1800's with bags o mystery for you to explore! Once serving as the stables for the neighbouring estate which was home to the 1st Duke of Sutherland. Since being converted into the home it is today, it perfectly combines period charm with modern twist, offering a spacious family home that honours its history whilst providing all of the comforts of contemporary living. The entrance opens into a sleek, modern kitchen with integrated appliances, including a fridge, dishwasher and ample storage solutions such as spice racks and deep pan drawers. The kitchen is complete with stylish quartz worktops and a stunning Rayburn stove. The kitchen flows effortlessly into the dining room, where French doors open onto a large private courtyard, creating a perfect space for al fresco dining and entertainment. The large living room is the heart of the home, offering an expansive area with French doors leading out to the courtyard. The focal point is an impressive Inglenook fireplace with a log burner, complimented by oak shutters, adding both warm and character to the space. A downstairs W/C is conveniently located off the living room for ease of use. Throughout the property, diamond leaded windows and original beams add a touch of elegance, enhancing the period charm of the property. For those seeking a quiet retreat, the study offers a peaceful space to work. The graceful staircase, complete with an arched stained glass window, leads to the first floor where a spacious landing area, currently utilised as an additional study area, greets you. Upstairs, the home boasts four generously sized double bedrooms, each with their own unique character. One of the bedrooms features a balcony offering views over the garden and the perfect spot for enjoying the morning sunrise. The family bathroom is beautifully appointed with a bath and shower combination, hand wash basin and W/C. The master suite is a true sanctuary, with a large en suite bathroom that includes a free standing, double ended bath, separate shower, hand wash basin, W/C and extensive storage. Outside, the property offers a beautiful courtyard, ideal for hosting family gatherings or simply enjoying peaceful afternoons in the sunshine. The luscious green lawn is perfect for both summer BBQ's and creating the perfect snow angels in the winter. A convenient laundry also adjoins to the kitchen making it the perfect place to kick off your boots before entering the main home. A carport to the side of the property provides convenient off road parking. Situated on Chase Lane, this home enjoys a fantastic location just a short drive from Stone's vibrant town centre, offering excellent shopping, dining and leisure facilities. The property is also within easy reach to the best schooling options and excellent commuter links via road, rail and bus. This exceptional home offers the best of both worlds - a historic property with beautiful period features, complimented by modern touches that provides all the comforts of contemporary living. Farewell for now but don't go too far as you will soon be drawn back to the good old days when imagining yourself in this stunning home on Chase Lane.



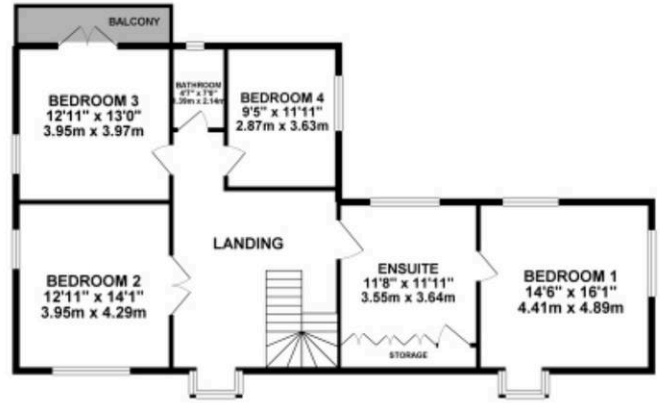
Stunning 4 bed link-detached home in Chase Lane, steeped in 1800's history yet modernised. Spacious living, period features, modern kitchen, courtyard, carport. Ideal family home near Stone town centre with excellent amenities and transport links. Council Tax band: G



GROUND FLOOR 1115.84 sq. ft.
(103.66 sq. m.)



1ST FLOOR 1112.42 sq. ft.
(103.35 sq. m.)



TOTAL FLOOR AREA : 2228.26 sq. ft. (207.01 sq. m.) approx.

Whilst every attempt has been made to ensure the accuracy of the floorplan contained here, measurements of doors, windows, rooms and any other items are approximate and no responsibility is taken for any error, omission or mis-statement. This plan is for illustrative purposes only and should be used as such by any prospective purchaser. The services, systems and appliances shown have not been tested and no guarantee as to their operability or efficiency can be given.
Made with Helpspot ©2020



You can include any text here. The text can be modified upon generating your brochure.

01785 814917