

114 Highlander Drive, Donnington

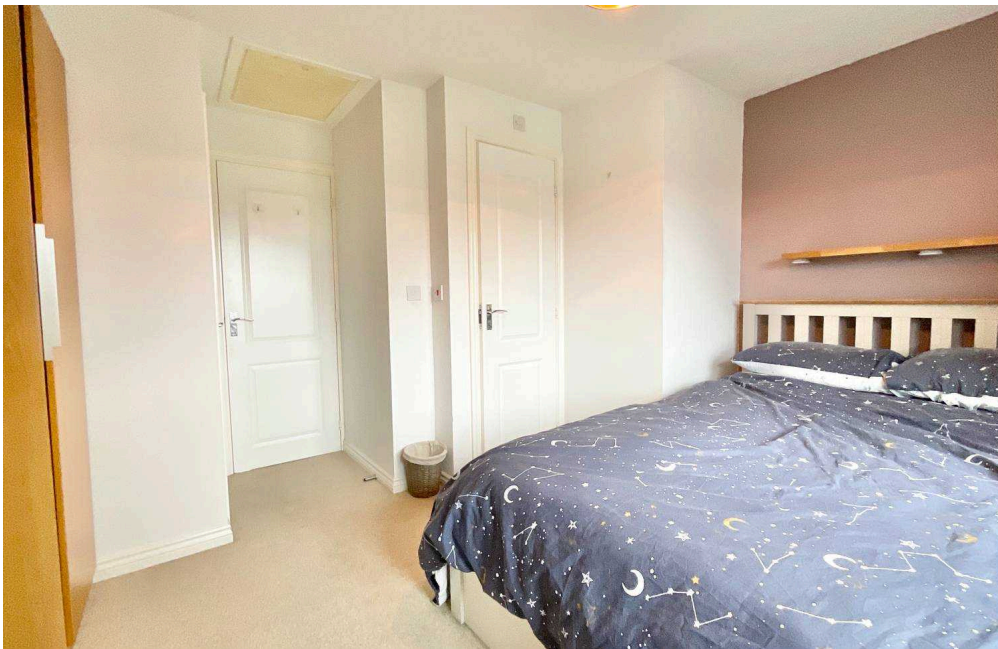
£170,000 Freehold



A fantastic two bedroom terraced home in Donnington with a large reception room and rear garden. • An open living room/diner creates a great entertaining space with French doors that open out to the back garden. • With two spacious double bedrooms, an suite shower room and separate bathroom you can't go wrong! • A kitchen fitted with white cabinets and complimenting grey worksurfaces can be found to the left when you enter the home, along with its integrated oven, hob and sink. • Located in Donnington, Telford be nearby to excellent amenities, schools and travel links.



On your marks, get set, go! Welcome to the Tour de Telford, where the finish line leads you straight to this charming two-bedroom, two-bathroom terrace home in Donnington. You'll be spinning your wheels to get here once you catch sight of this beauty! Step through the front door and find yourself welcomed right into the action. To your left, the kitchen is a sleek and stylish pit stop, featuring white cabinets, grey countertops and an integrated oven, gas hob and sink with a draining board to keep your culinary course on track. Opposite, you'll find a handy W.C. and storage space, ideal for a quick refuel! Pedal down the hallway to the open-plan living/dining room, a spacious area perfect for entertaining your team. With French doors opening out to the back garden, you can easily cruise into outdoor dining and relaxation mode. Upstairs, you'll discover two fantastic double bedrooms. Bedroom one includes its own ensuite shower room, giving you a private oasis to recharge after a long day. Bedroom two is equally as spacious, with wood-effect flooring to add that extra touch. A separate bathroom completes the home with a bath, W.C. and sink, so everyone's covered. Outside, the back garden offers a mix of lawn and patio, the perfect spot to create your dream seating area and gear up for those sunny afternoons. Don't worry about parking, with two designated spaces in a private car park accessed through an archway on the left, you'll have no need to wheel around the block looking for a spot. Located in Donnington, you're close to great amenities, schools and travel links in Telford town centre. Don't miss out on this winning opportunity, make this home your trophy today! Call us to book your viewing and get ready to race home!



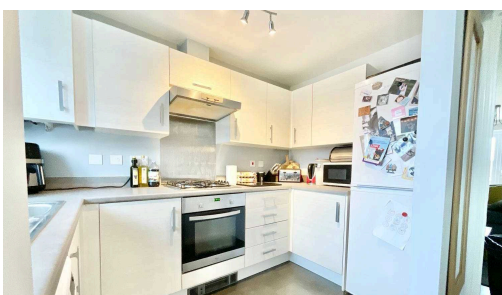
Race to this 2-bed, 2-bath terraced home in Donnington! Modern kitchen, spacious living/dining area with French doors to garden. Two double bedrooms, one with ensuite. Bathroom, parking, convenient location near amenities and schools. Trophy home waiting for you!

Council Tax band: B

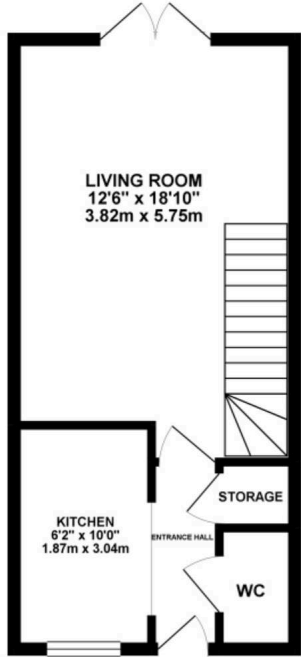
Tenure: Freehold

EPC Energy Efficiency Rating: C

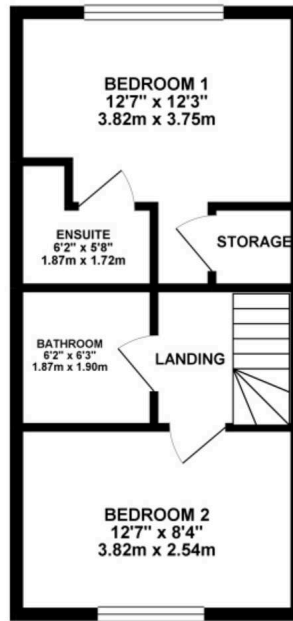
EPC Environmental Impact Rating:



GROUND FLOOR 341.16 sq. ft.
(31.70 sq. m.)

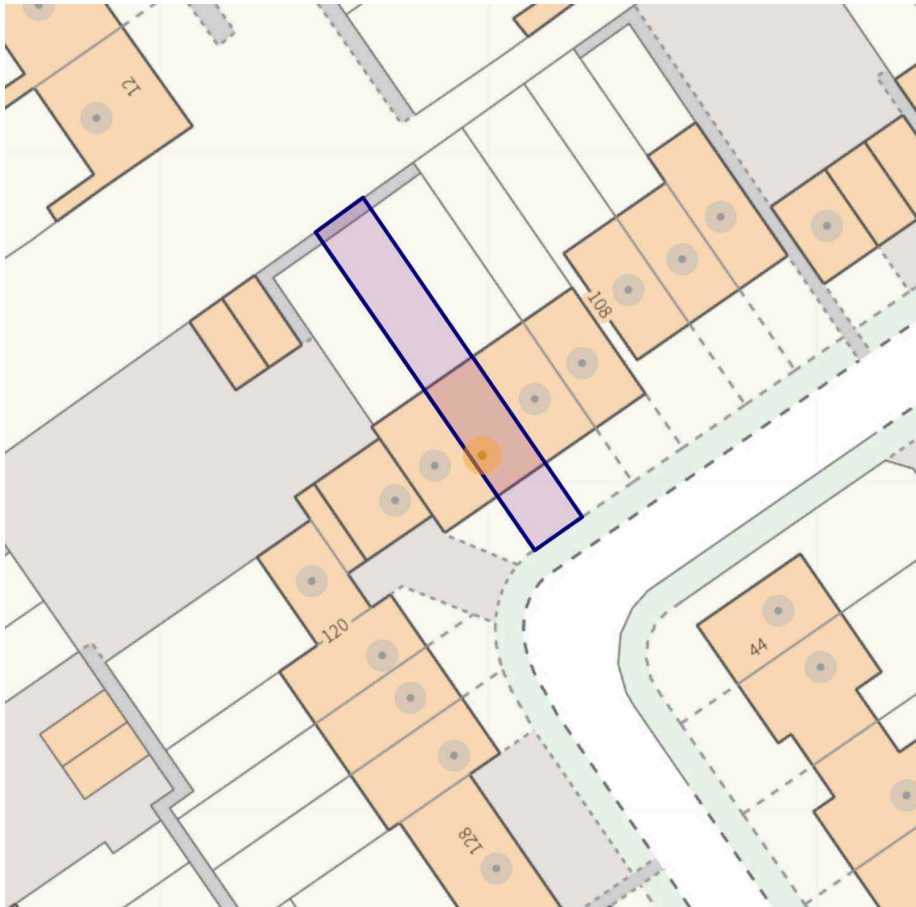


1ST FLOOR 336.90 sq. ft.
(31.30 sq. m.)



TOTAL FLOOR AREA - 678.06 sq. ft. (62.99 sq. m.) approx.

Whilst every effort has been made to ensure the accuracy of the figures contained here, measurements of doors, windows, rooms and any other items are approximate and no responsibility is taken for any error, omission or misstatement. This plan is for guidance purposes only and should be used as such by any prospective purchaser. The services, systems and appliances shown have not been tested and no guarantee as to their operability or efficiency can be given.
Made with Hdrpapi ©2024



You can include any text here. The text can be modified upon generating your brochure.

01785 851886