



## Fox Lodge, Rowan Lane

£595,000 Freehold



A charming three bedroom bungalow in Ashley Heath offering beautiful gardens and a private gated driveway. • Three bedrooms with built in wardrobes, two are spacious double where as the third is single that would also make a great study. • A generous sized living room featuring a log burner and views over the beautiful garden and surrounding woodland. • A double garage and private gated driveway for parking bliss, alongside the garages storage advantages, • Located in Ashley Heath enjoy a quiet lifestyle away from the hustle and bustle of everyday life.



Why follow the usual path when you can take a clever detour? Just like our cunning fox, this delightful three-bedroom bungalow in Ashley Heath is sure to lead you to unexpected treasures! Don't let this one slip away, get your paws on it before anyone else does! As you glide down the long private driveway, you'll be greeted by a charming double garage and a welcoming front porch. Step inside and be immediately charmed by the entrance hallway where you'll discover two spacious double bedrooms, both with built-in wardrobes. The first bedroom features a large window that offers lovely views of the garden! Continue down the hall to find the third bedroom, another fantastic space featuring built-in wardrobes and an airing cupboard. Currently a home office, it's ideal for anyone looking to work from their foxhole. Next up is the dining room, where you'll enter through a grand stone archway, this inviting space flows seamlessly into the kitchen, which is stocked with many cupboards, generous counter space along with floor-to-ceiling tiling, a double oven and a handy one-and-a-half bowl sink. Plus, a side door leads you directly to the outdoors. Now, let's not forget the bathroom, equipped with a large shower, W.C. and sink. Fianlly, the pièce de résistance, the living room! They say the kitchen is the heart of the home, but with its floor-to-ceiling windows, a cosy log burner and stunning views of the garden, this room is pure paradise and the ideal spot for entertaining friends or unwinding after a long day of fox-trotting. Step outside to the stunning garden, where a spacious lawn awaits you year-round, surrounded by woodland for ultimate privacy. You'll also find a block-paved patio, perfect for creating your outdoor oasis. To the right, the double garage ensures you have all the parking and storage you could dream of. Located in peaceful Ashley Heath, this semi-rural retreat offers the tranquility and privacy you crave. If you're ready to make Fox Lodge your very own sanctuary, give us a call today at 01785 851886 to book your viewing. Don't let this foxy find slip away!



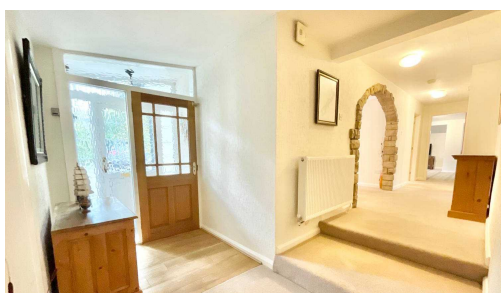
Beautiful bungalow in Ashley Heath with spacious double bedrooms, reception rooms, kitchen, log burner in living room, large garden with woodland views, and double garage. Private and serene setting. Call to view - 01785 851886.

Council Tax band: F

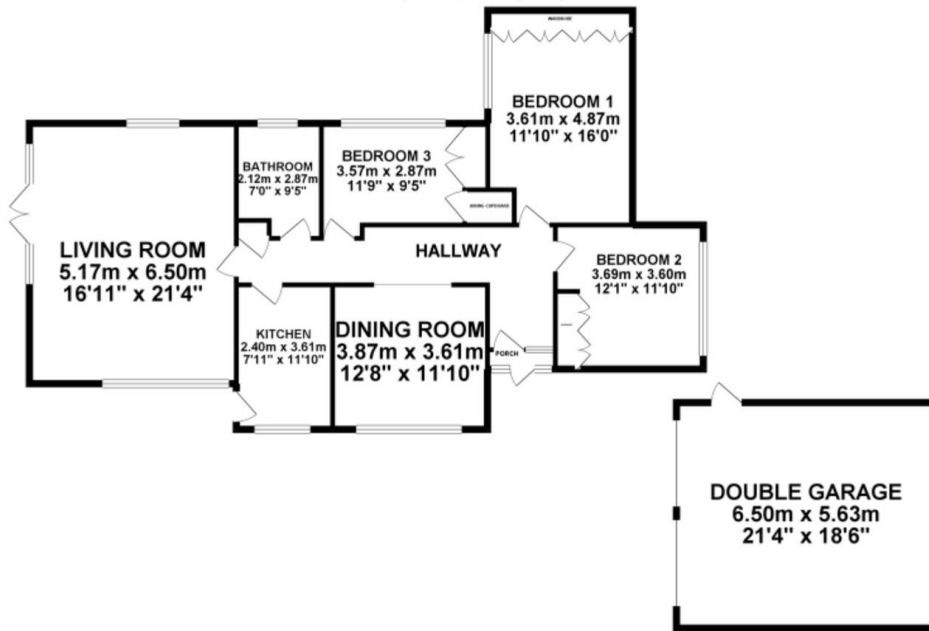
Tenure: Freehold

EPC Energy Efficiency Rating: E

EPC Environmental Impact Rating: E



GROUND FLOOR 156.91 sq. m.  
( 1688.97 sq. ft. )



TOTAL FLOOR AREA : 156.91 sq. m. ( 1688.97 sq. ft. ) approx.

Whilst every attempt has been made to ensure the accuracy of the floorplan contained here, measurements of doors, windows, rooms and any other items are approximate and no responsibility is taken for any error, omission or mis-statement. This plan is for illustrative purposes only and should be used as such by any prospective purchaser. The services, systems and appliances shown have not been tested and no guarantee as to their operability or efficiency can be given.  
Made with Metropix ©2024



You can include any text here. The text can be modified upon generating your brochure.

01785 851886