



## Flat 48, The Moorings Stafford Street, Stone

£130,000 Leasehold



This one-bedroom ground-floor apartment offers easy, direct access to the gardens. • Picturesque views of the canal right from your living room and bedroom. • Enjoy a stylish kitchen and a contemporary shower room. • With a vibrant community of over 55s, residents can connect at coffee mornings and social gatherings. • Tended gardens provide a peaceful spot, perfect for relaxing.



Dreaming of a peaceful spot where you can truly feel moored? At The Moorings, you can leave stress behind and embrace a lifestyle that allows you to anchor yourself in relaxation. Forget the worries of garden maintenance; here, you can unwind in beautifully landscaped grounds while listening to the soothing sounds of canal boats gently mooring right outside your window. This is where you want to spend your time. This is retirement living at its very best. The Moorings is an exclusive community for those over 55, where residents come together in the communal lounge for coffee mornings, explore the shared library and reading room, and make use of laundry facilities and parking. Inside this ground-floor apartment, the immaculate accommodation includes a stylish kitchen with plenty of storage, a built-in oven and hob, and an integrated fridge-freezer. The modern shower room provides contemporary comfort, while the double bedroom features fitted wardrobes for ample space. The living room is a cosy haven, complete with French doors that open directly onto the gardens. This apartment offers direct access to these gardens, allowing you to immerse yourself in the beauty of nature at your doorstep. With easy access to the town centre and those beautiful canalside views, this is truly where you'll want to spend your time—moored at The Moorings.

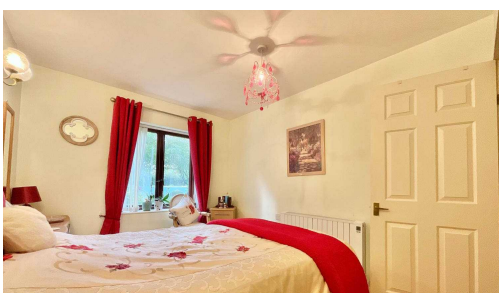


Retirement living at its best in this exclusive over-55s community. Ground-floor apartment with easy garden access, modern kitchen, shower room, and peaceful living room with garden views. Onsite amenities include communal lounge, library, and parking. Ideal for a tranquil lifestyle by the canal. Council Tax band: B

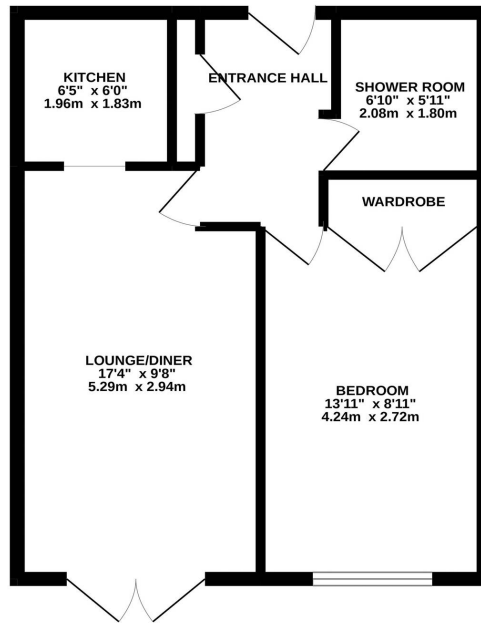
Tenure: Leasehold

EPC Energy Efficiency Rating: E

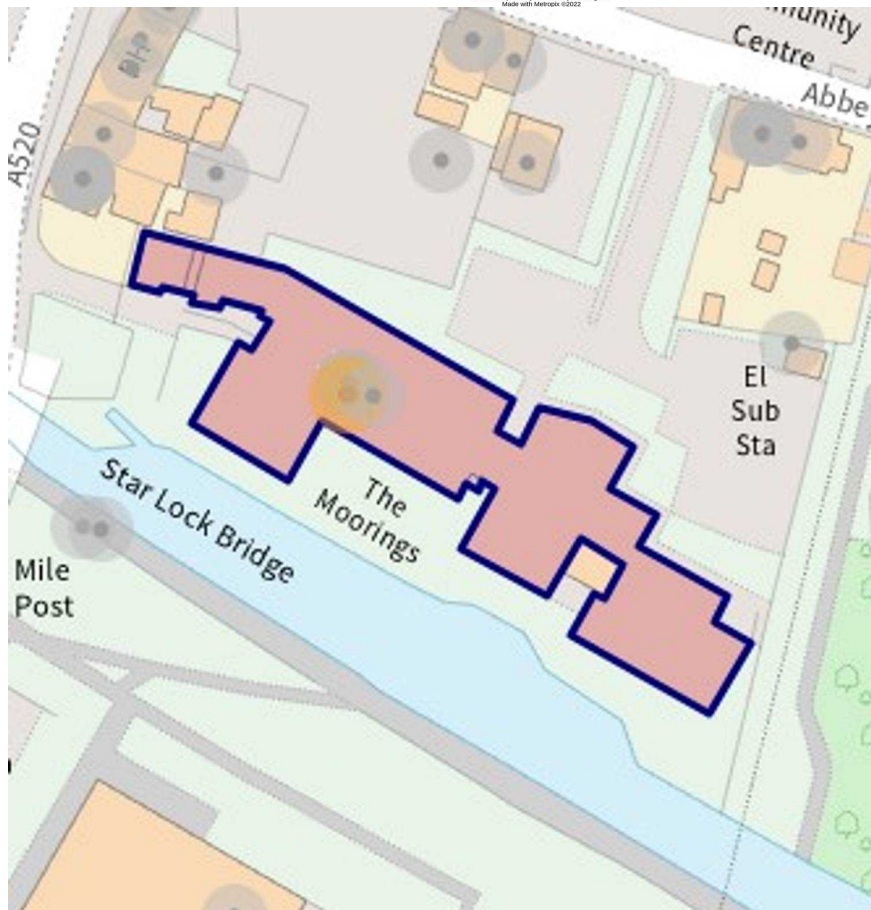
EPC Environmental Impact Rating: F



GROUND FLOOR



While every attempt has been made to ensure the accuracy of the floorplan, contained here, measurements of doors, windows, rooms and any other items are approximate and no responsibility is taken for any error, omission or mis-statement. This plan is for illustrative purposes only and should be used in conjunction with any prospective purchaser. The services, systems and appliances shown have not been tested and no guarantee as to their operability or efficiency can be given.  
Made with MetreX ©2022



You can include any text here. The text can be modified upon generating your brochure.

01785 814917