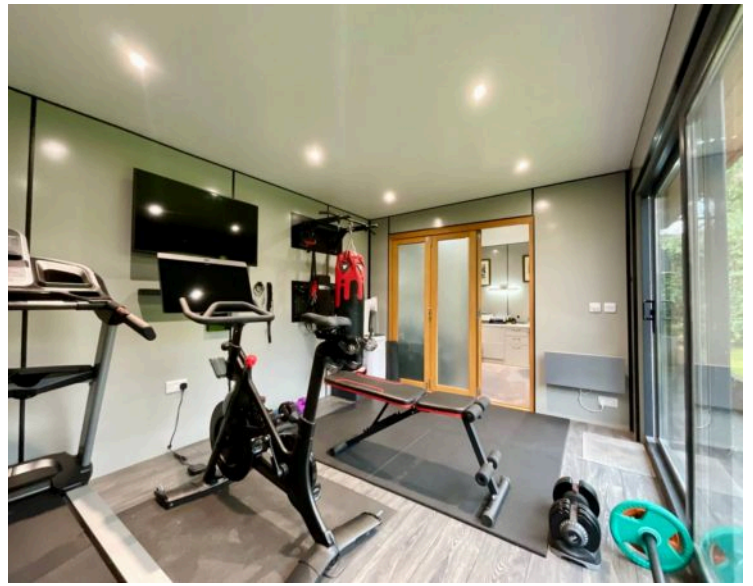


51 Mount Avenue, Stone

£390,000 Freehold



Beautiful three-bedroom detached family home on Mount Avenue within walking distance to Stone town centre, excellent local schools and convenient road and rail commuter links. • Open-plan living downstairs spanning from the living room to the kitchen/diner, perfect for the whole family to spread out and enjoy. • Three double bedrooms, complimented by the main bathroom with a walk-in rainfall shower, his and hers sinks and W/C. • Stunning garden with block paved seating area, louvered pergola and the impressive outbuilding, which currently houses a store, gym and study. • Driveway providing ample off road parking.



Discover your dream home on Mount Avenue, a charming three-bedroom detached house. Enter through the front door into a welcoming entrance hall. The spacious open-plan living room leads to a versatile rear space, perfect for a reading nook, play area, or family gatherings. Through elegant glazed French doors, find an extended section currently used as a peaceful study, filled with natural light. The modern, top-quality contemporary kitchen, with sleek cabinetry and integrated appliances, is the heart of the home. It adjoins a dining area with an inviting in-built breakfast bar. The converted garage serves as a playroom and utility area, keeping the home organised. A convenient downstairs W/C ensures comfort for guests and family alike. Upstairs, there are three double bedrooms. The first has built-in wardrobes that maximise space. The second bedroom features an airing cupboard for additional storage, and the third bedroom, though smaller, includes a built-in cupboard, making it a practical space. The family bathroom offers a walk-in rainfall shower, his-and-hers sinks, and a W/C. The loft is boarded and has electrics fitted, ready for potential transformation (subject to necessary planning permissions). Outside, enjoy a beautifully landscaped garden with a block-paved seating area and a metal pergola with a louvred roof currently covering a hot tub. The outside area also features a sunning garden office that includes a handy store area, a home gym, and a second study with fully networked internet and Wi-Fi, electrics, and heating. The driveway provides ample off-road parking for up to 3 cars with security cameras both at the front and rear. Located a short walk from Stone town centre, this home is close to excellent schools, shops, restaurants, and supermarkets. Commuters will appreciate the nearby rail, road, and bus links, with Stone train station within walking distance. This home on Mount Avenue is ready for you to create your own story.



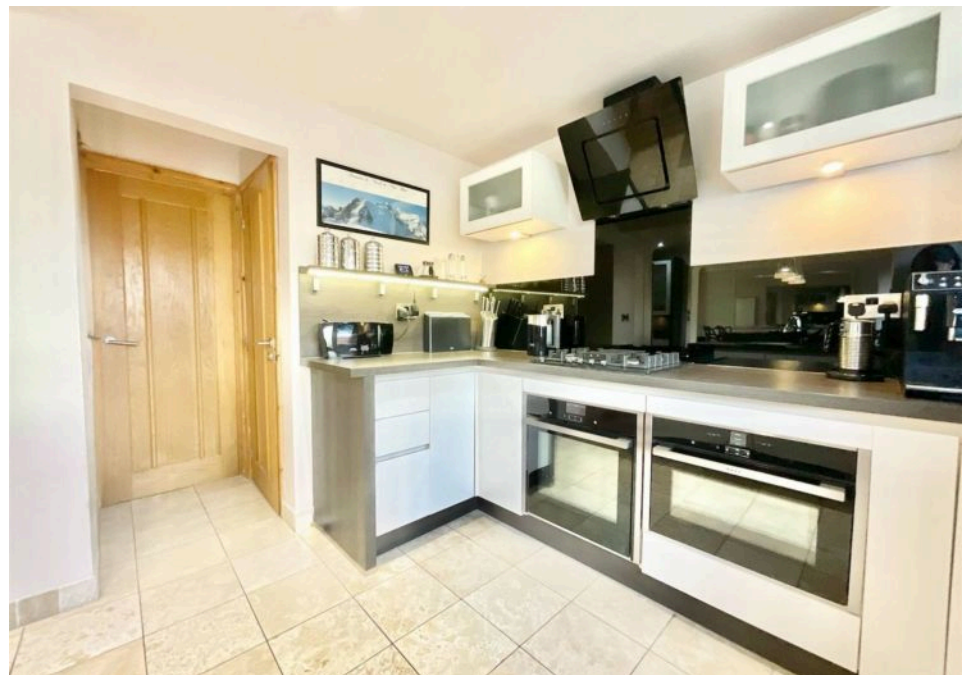
Stunning 3-bed detached home on Mount Avenue with open-plan living, kitchen/diner. Main bath, beautiful garden and outbuilding with adaptable space. Close to Stone town centre. Begin your story today!

Council Tax band: D

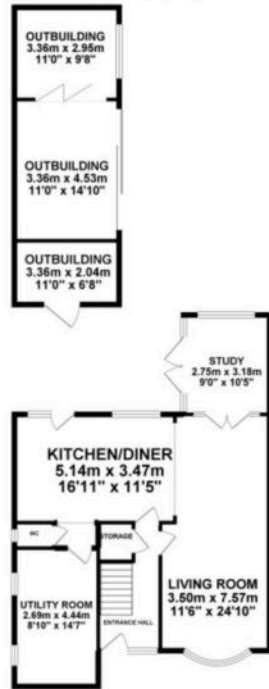
Tenure: Freehold

EPC Energy Efficiency Rating: C

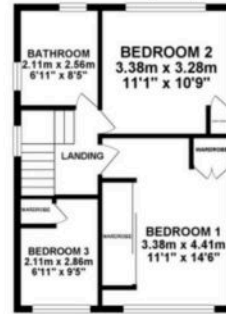
EPC Environmental Impact Rating:



GROUND FLOOR 105.15 sq. m.
(1131.88 sq. ft.)



1ST FLOOR 42.23 sq. m.
(454.53 sq. ft.)



TOTAL FLOOR AREA : 147.38 sq. m. (1586.40 sq. ft.) approx.

While every attempt has been made to ensure the accuracy of the floorplan contained here, measurements of walls, windows, doors and any other items are approximate and no responsibility is taken for any error arising from this document. The plan is for guidance purposes only and should be used in conjunction with any professional's advice. The names, systems and appliances shown are not to be taken as an indication of any particular brand or model. Plans are subject to change without notice. See also the floor plan on page 10 of the brochure.



You can include any text here. The text can be modified upon generating your brochure.