

The Canterbury, Castle Meadows, Eccleshall

£460,000 Freehold



The development adjoins the Staffordshire countryside providing open green space right on your doorstep • Located within a stone's throw of Eccleshall High Street with a vibrant community boasting a range of shops, restaurants and all necessary amenities • Set within a stunning new development of similar homes boasting attention to detail at every turn from site design through to exceptional build standards • A four bedroom detached family home with two separate reception rooms on the ground floor as well as a separate study • Four well proportioned bedrooms on the first floor having both an en-suite shower room and family bathroom



Castle Meadows is a new development within a stone's throw of Eccleshall High Street. The development is made up of 37 new homes blending contemporary living with the timeless charm offered by this historic market town. Each home has been designed to create comfort for the family whilst benefitting from the idyllic semi-rural lifestyle that Eccleshall offers.

The Canterbury is a four-bedroom detached home benefitting from separate rooms on the ground floor creating plenty of space for the family to enjoy independently or together. The ground floor is divided into a lounge with front front-facing bay window, a dining room accessed from the kitchen with French doors opening out into the rear garden and a study from the main hallway. The kitchen is fitted with a range of base and wall units and also benefits from having a separate utility room to provide further storage and space for the washing machine away from the kitchen. The ground floor is finished with a guest WC. Upstairs four double bedrooms occupy each corner of the house giving everyone plenty of privacy with wardrobes to bedrooms one and two and both an ensuite shower room to the master bedroom and a family bathroom accessed from the landing.

Outside, the property will benefit from driveway parking, a good sized rear garden and garaging.

These homes will be finished to an exceptional standard throughout. The kitchen will be complete with a choice of Gaddesby base and wall units fitted with soft close drawers and doors finished with laminated worktops and matching upstands. Zanussi appliances will be fitted including a five burner gas hob with chimney extractor hood and have space and plumbing for your washing machine and fridge freezer. There are options available to have additional appliances added. The bathrooms will be finished with a range of Roper Rhodes sanitaryware and Porcelanosa tiling.

Imagery used within these details are a combination of computer generated images and previously finished homes and should only be seen as a representation of the finished property. Details will vary and but these images should provide a guide as to what to expect.

Price List

Plot 1 - Ludgate - £405,000

Plot 2 - Warstone - Show Home - Price TBC

Plot 3 - Canterbury - Show Home - Price TBC

Plot 4 - Canterbury - £460,000

Plot 5 - Stratford - £430,000

Plot 6 - Stratford - £430,000

Plot 7 - Canterbury - £460,000

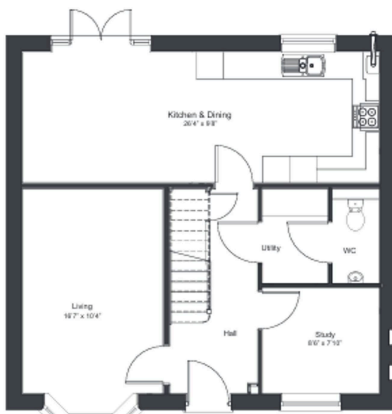
Eccleshall is a vibrant community with a rich heritage and holds regular local events. From the well-known Eccleshall Show down to the local clubs and groups held by different members of the community, there's always something happening to bring people together. The town is surrounded by beautiful countryside, offering over 130 public footpaths that are perfect for nature lovers and families looking for outdoor activities. With top-rated schools, convenient transport links, and a welcoming atmosphere, Eccleshall offers the perfect balance of rural tranquility and access to nearby urban centres. This town provides not just a place to live, but a lifestyle filled with beauty, community, and convenience, making it the perfect location for your next home.



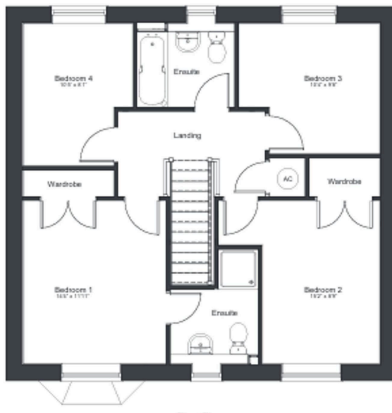
The Canterbury: 4-bed detached with spacious living areas, ensuite master, garage, driveway, and high-quality finishes throughout. Council Tax band: TBD

Tenure: Freehold





Ground Floor



First Floor

You can include any text here. The text can be modified upon generating your brochure.