



## 8 Hawley Close, Stone

£350,000 Freehold



From the bright and airy open plan living and dining area to the cosy yet spacious garden room with underfloor heating, every room connects beautifully, making it a perfect family hub. • The converted garage offers endless possibilities, a home office, a playroom, a guest bedroom, or even a hobby space. It's a home that adapts to your needs. • From the sleek kitchen to the elegant en-suite in the master bedroom, every inch of this home is beautifully finished and ready to enjoy. • The spacious driveway offers plenty of room for multiple vehicles, so there's no need to worry about squeezing everyone in, perfect for busy households or when guests come trotting over! • Positioned in sought-after Hawley Close, it's close to excellent schools, local amenities, and superb commuter links.



Hold your horses! What's that For Sale on Hawley Close? Saddle up and get ready to fall head over hooves for this fantastic three-bedroom family home that ticks all the boxes, and then some! Immaculately presented throughout, with a layout that flows like a dream, this home is as versatile as it is inviting. Perfect for modern living, it's a home where you can truly hold your ground and put down roots. Step inside through the handy porch (no muddy boots in here!) and into the welcoming hallway. From here, you'll find the open plan living and dining area, a space that's ready to hold court with family and friends. A bay window to the front floods the room with light, creating a warm and airy feel. But hold up, there's more! Flow seamlessly into the garden room, complete with underfloor heating, making it the perfect spot to enjoy the views come rain or shine. The modern kitchen is as practical as it is stylish, boasting plenty of storage and overlooking the rear garden. Through the back door, you'll find a side entrance to the garden and access to the converted room downstairs, formerly the garage, but now a fabulous home office, guest bedroom, playroom, or whatever your heart desires. There's also a downstairs cloakroom for added convenience. Heading upstairs, you'll find three generously sized bedrooms. The master bedroom steals the show with its elegant en-suite, while two of the bedrooms feature fitted wardrobes, perfect for keeping things neat and tidy. The modern family bathroom, complete with a shower over the bath, ensures there's plenty of space for everyone to get ready in the morning. Now, let's step outside and hold your horses! The driveway offers ample parking space, so there's no need to worry about squeezing everyone in. To the rear, the private garden, with a patio for alfresco dining, a lush lawn for the kids to play on, and a charming pond that adds a touch of serenity. Sit back, relax, and listen to the trickle of the water. Located in the sought-after Hawley Close, this home is a gallop away from excellent schools, town amenities, and commuter links. So don't delay, this property won't hold still for long. Call us today to arrange your viewing before someone else reins it in!

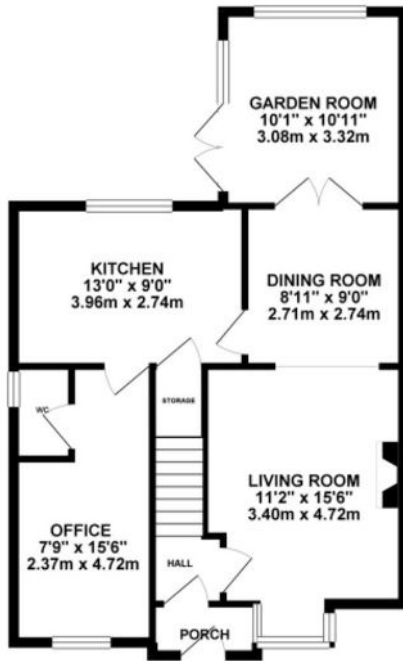


Fantastic 3-bed family home in Hawley Close. Open plan living, garden room, modern kitchen, converted room, ample parking. Close to schools, amenities, and commuter links. Book viewing now! Council Tax band: D

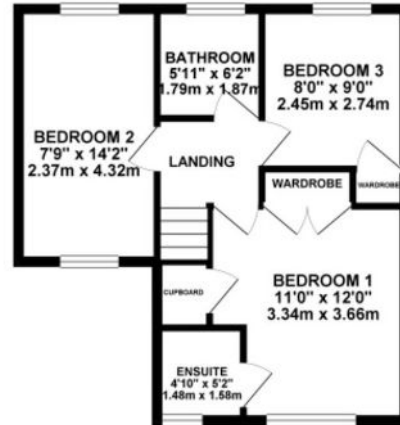
Tenure: Freehold



GROUND FLOOR 641.33 sq. ft.  
( 59.58 sq. m. )



1ST FLOOR 431.48 sq. ft.  
( 40.09 sq. m. )



TOTAL FLOOR AREA : 1072.81 sq. ft. ( 99.67 sq. m. ) approx.

Whilst every attempt has been made to ensure the accuracy of the floorplan contained here, measurements of doors, windows, rooms and any other items are approximate and no responsibility is taken for any error, omission or mis-statement. This plan is for illustrative purposes only and should be used as such by any prospective purchaser. The services, systems and appliances shown have not been tested and no guarantee as to their operability or efficiency can be given.  
Made with Interplan ©2014



You can include any text here. The text can be modified upon generating your brochure.