



Heath House Sandy Lane, Red Bull

£550,000 Freehold



This three bedroom home boasts the perfect blend of rural charm and home comforts located on Sandy Lane between Market Drayton and Loggerheads. • Three double bedrooms ensures room for everyone to unwind and relax. The master suite includes its own ensuite and dressing room to enjoy. • The kitchen/diner/family room is the perfect entertaining space with a utility room attached for extra day to day convenience. • Walk into the entrance hall and be taken back by the beautiful feature fireplace, the spacious living room is also complete with a log burner and a floor to ceiling window with scenic garden views. • A fantastically sized garden, a workshop and insulated shed with electrics guarantees and outdoor oasis for you to explore throughout the year.



You don't need a beach to feel like you're on holiday! This three-bedroom detached home is nothing short of a five-star all-inclusive resort for the whole family, where relaxation and comfort are served on a silver (or sandy) platter! With two parking entrances, you can choose your own VIP arrival experience before stepping up to the front door. Once inside, prepare to be wowed by the expansive entrance hall, complete with a stunning Clearview log burner, a cosy invitation to those chilly nights in. To your left, the living room beckons, a spacious reception area with yet another Clearview log burner to snuggle up by and a floor-to-ceiling window framing views of the garden and rural surroundings. It's the perfect spot to kick back, relax and watch the waves of nature roll by. Back in the entrance hall, you'll find access to a generously sized cloakroom, a utility room and the heart of the home, the kitchen/diner/family room. This open-plan space is tailor-made for entertaining or laid-back family evenings. Bespoke painted cabinetry flows seamlessly alongside oak worktops and a larder unit, while a solid fuel Rayburn cooker, Belfast sink, Neff dishwasher and double oven make cooking feel like a breeze, or a refreshing sea breeze! The utility room adds extra convenience, with space for your laundry essentials and a charming barn door leading to the rear garden. Upstairs, the holiday vibes continue. Three double bedrooms and two bathrooms await, starting with the master suite, a generously sized retreat featuring an ensuite, a dressing room and two built-in storage units for all your packing needs. The second and third bedrooms also boast lovely views of the rural surrounds, while the family bathroom completes the first floor with a spacious double shower, sink, W.C. and airing cupboard. Outside, it's a paradise for green thumbs and outdoor enthusiasts alike. The expansive garden is brimming with green lawns, trees, plants and shrubs, ready for your gardening adventures. Multiple patio areas provide the perfect spot to soak up the sun, while a large workshop and insulated shed with power and lighting offer endless possibilities, whether it be a home office or studio. Located in the peaceful hamlet of Red Bull, you'll enjoy the serenity of rural living while being perfectly positioned between the bustling town of Market Drayton and the charming village of Loggerheads, both offering excellent amenities and schools. Why wait for your next holiday? Check in to Sandy Lane today, your personal retreat is ready to welcome you. Call us now to book your viewing and start your lifelong holiday!



Stunning 3-bed detached home in rural Red Bull. Expansive entrance, log burners, open-plan kitchen/diner/family room, master suite with ensuite, beautiful garden, workshop. Ideal for nature lovers. Close to Market Drayton & Loggerheads.

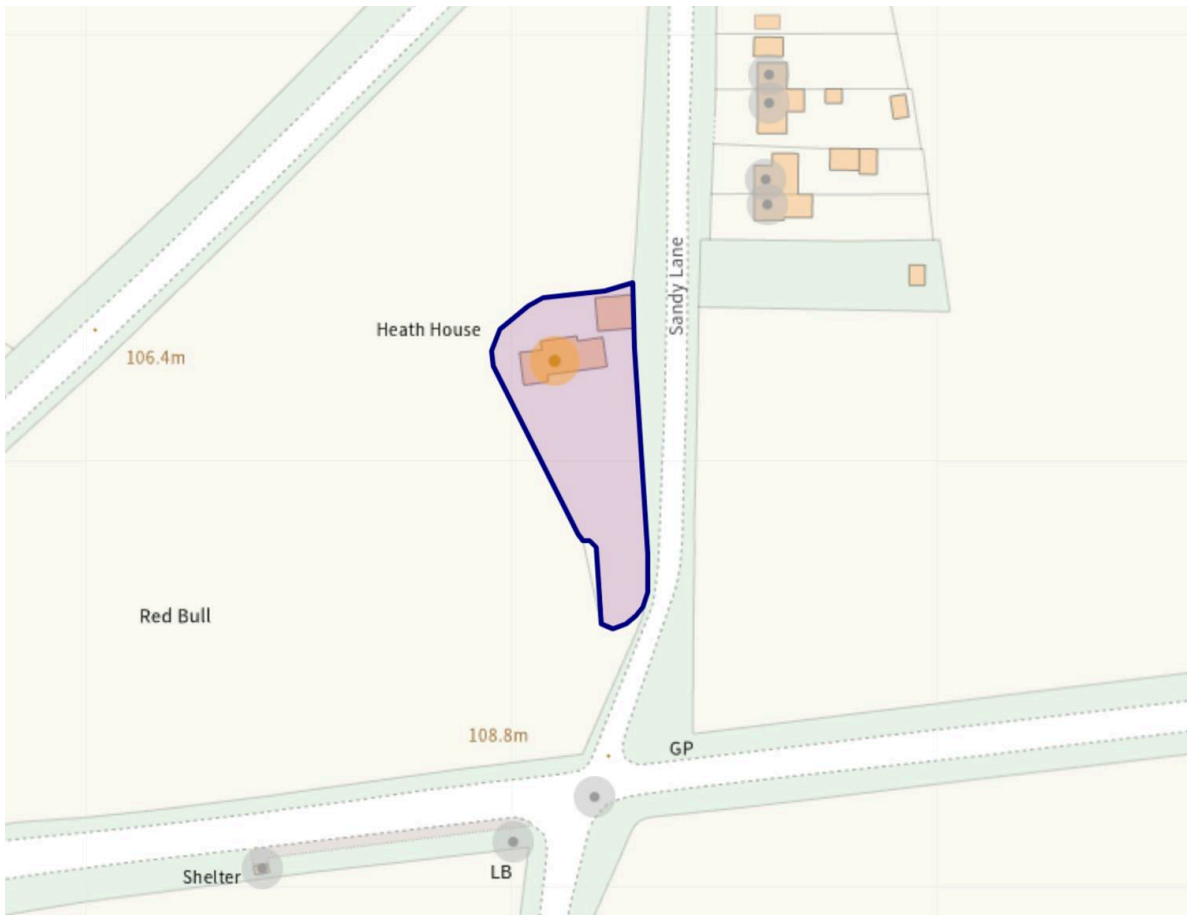
Council Tax band: F

Tenure: Freehold

EPC Energy Efficiency Rating: D

EPC Environmental Impact Rating: E





You can include any text here. The text can be modified upon generating your brochure.