



Flat 16, The Moorings Stafford Street, Stone

£82,000 Leasehold



A smart one-bedroom, first floor apartment at The Moorings, wake up to peaceful surroundings and enjoy the beautifully maintained gardens and the residents' lounge. • With a lift for easy access, a modern kitchen, a spacious double bedroom with built-in storage, and an updated shower room, this home is designed for stress-free living. • More than just a place to live, The Moorings offers a friendly and sociable atmosphere with shared spaces, a communal laundry, and even a guest suite for visiting family and friends. • Situated on the edge of Stone town centre, you're just a short stroll from shops, cafés, and all the essentials. • With no upward chain, secure entry, and resident parking, moving in and settling down couldn't be easier. Just turn the key and start enjoying a carefree lifestyle.



The Moorings, what more could you ask for? On the edge of Stone town centre, The Moorings offers more than just a place to call home, it's a place of peace, security, and community. This smart and well-kept first-floor retirement apartment is the perfect place to drop anchor and enjoy life at a gentler pace. Step inside, whether by lift or one flight of stairs, and you'll find a welcoming entrance hall with storage, a generously sized living room with a charming rear-facing bay window, and a stylish kitchen with integrated appliances, including new ceramic hob. The spacious double bedroom boasts a built-in wardrobe, while the modern shower room has been thoughtfully updated for ease and comfort. Life at The Moorings isn't just about your own four walls, it's about the whole experience. 'Moor' up in the beautifully kept gardens, unwind with neighbours in the residents' lounge overlooking the canal, or take advantage of the communal laundry facilities. Expecting visitors? No problem, there's a guest suite available so they can drop anchor too. With parking for residents and guests, a secure door entry system for peace of mind, and no upward chain, this is stress-free living at its finest. Plus, with Stone's vibrant town centre just a short stroll away, you have shops, cafés, and everything you need right on your doorstep. So why just drift along when you could settle in? Call us today and make The Moorings your next port of call!



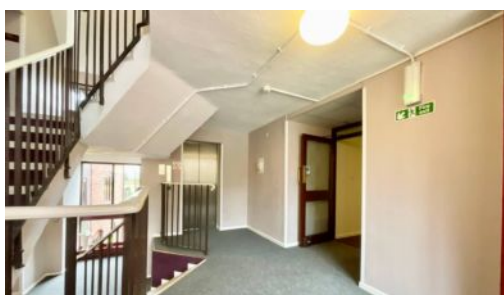
The Moorings in Stone offers smart retirement living with a charming bay window and garden views. Residents enjoy a community lounge, guest suite, and close proximity to town centre amenities.

Council Tax band: B

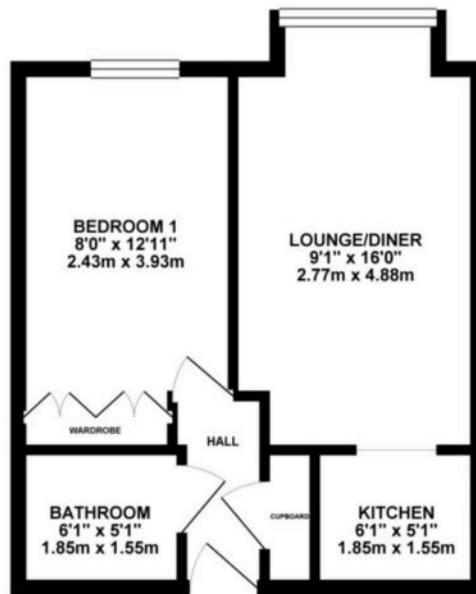
Tenure: Leasehold

EPC Energy Efficiency Rating: E

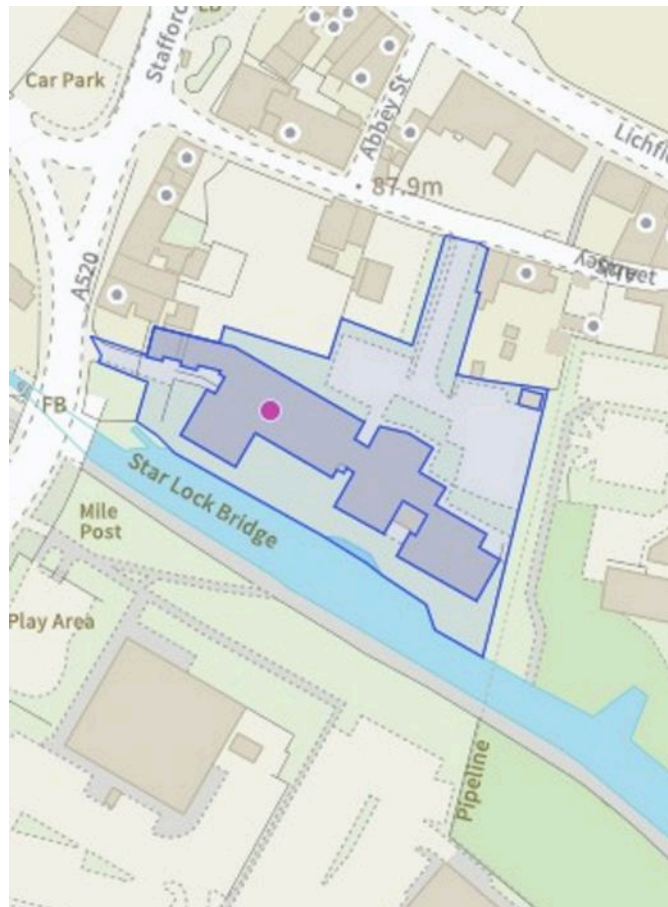
EPC Environmental Impact Rating: E



GROUND FLOOR 338.59 sq. ft.
(31.46 sq. m.)



TOTAL FLOOR AREA - 338.59 sq. ft. (31.46 sq. m.) approx.
While every effort has been made to ensure the accuracy of the floorplan contained here, measurements of floors, walls, doors and any other details are approximate and no responsibility is taken for any error or omission of this document. This plan is for guidance only and should be used as such by any prospective purchaser. The vendor, agent and any other person involved in the sale of the property shall not be liable for any error or omission of this document. No part of this plan may be reproduced or stored in a retrieval system without the prior written permission of the vendor.



You can include any text here. The text can be modified upon generating your brochure.