



16 Whitehouse Lane, Nantwich

£250,000 Freehold



Offered for sale chain free, two bedroom true bungalow in sought after location, just a short walking distance from Nantwich town centre • Lounge with bay window, electric fire in surround leading through to rear bedrooms • Kitchen with a range of wall and base units, with space for washing machine, cooker and fridge • Two bedrooms, the second with sliding doors leading into the pleasant glass lean-to • Bathroom with walk in mains fed shower, WC and wash hand basin in vanity unit • Fully paved low maintenance garden • Detached garage with light and power and driveway parking for 1 vehicle • Gas central heating and double glazed throughout



Located just a stone's throw away from the bustling Nantwich town centre, this charming 2-bedroom semi-detached bungalow offers a cosy retreat in a sought-after location. Step inside to discover a warm and inviting lounge boasting a bay window that floods the room with natural light, creating a serene ambience. The electric fire nestled in a decorative surround adds a touch of comfort, perfect for unwinding after a long day. Added to this the property boasts gas central heating and double glazing throughout.

The kitchen is a delightful space, equipped with a range of wall and base units that provide ample storage for all your culinary essentials. With space for a washing machine, cooker, and fridge, this kitchen is not only practical but also allows for creativity to flourish. Imagine cooking up your favourite meals while looking out onto the tranquil surroundings.

This charming abode features two bedrooms, each offering a unique charm. The second bedroom boasts sliding doors that lead into a glass lean-to, making it the ideal spot for enjoying your morning coffee or simply basking in the beauty of nature. This room would also make the perfect dining room should you so wish. The bathroom comes complete with a walk-in mains fed shower, WC, and wash hand basin set within a chic vanity unit.

Outside, a fully paved low maintenance garden awaits, providing a private oasis for relaxation and enjoyment. Whether you prefer lounging in the sun or hosting a barbeque with friends and family, this outdoor space is the perfect place to unwind and create lasting memories. Additionally, a detached garage with light and power, along with driveway parking for one vehicle, offers convenience and peace of mind.

If you're seeking a tranquil retreat with easy access to amenities and a vibrant town centre, look no further than this delightful 2-bedroom semi-detached bungalow, with the added bonus of being offered for sale chain free. Don't miss out on the opportunity to make this house your home sweet home. Give us a call today to schedule a viewing and experience the charm and comfort of this lovely abode first hand.

Location:

Nantwich is a historic market town located in the county of Cheshire, England. It lies on the banks of the River Weaver and is approximately 5 miles south-west of the larger town of Crewe. Nantwich has a rich history that dates back to Roman times, and it is known for its well-preserved medieval architecture and charming streets.

One of the most prominent features of Nantwich is its black and white timber-framed buildings, which give the town a distinctive character. The town centre is filled with historic structures, including the Nantwich Town Walls, St. Mary's Church, and the Queen's Aid House. The Nantwich Museum, located in a restored Georgian townhouse, offers visitors an opportunity to explore the town's history and heritage.

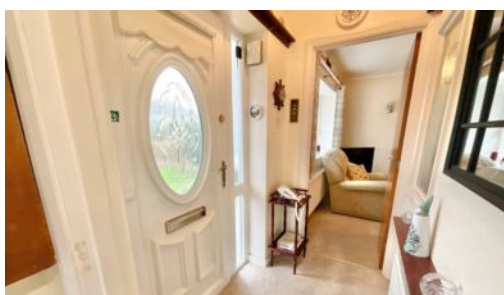
Nantwich is also famous for its annual food and drink festival, which takes place in September and attracts thousands of visitors. The festival showcases a variety of local and regional produce, including Cheshire cheese



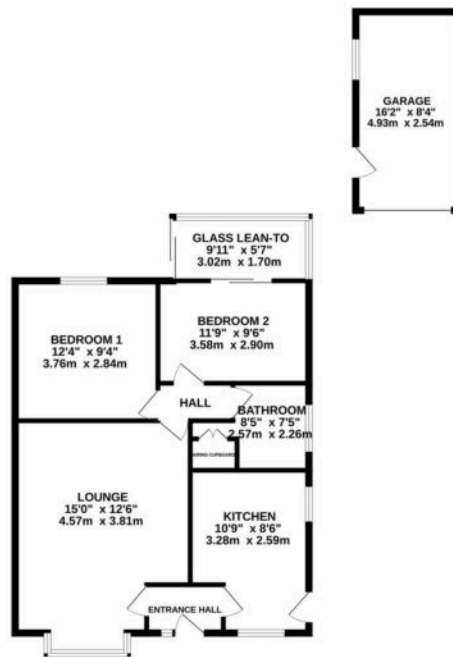
Charming 2-bed semi-detached bungalow near bustling Nantwich centre. Cosy lounge, well-equipped kitchen, glass lean-to, low maintenance garden, garage, and driveway.

Council Tax band: C

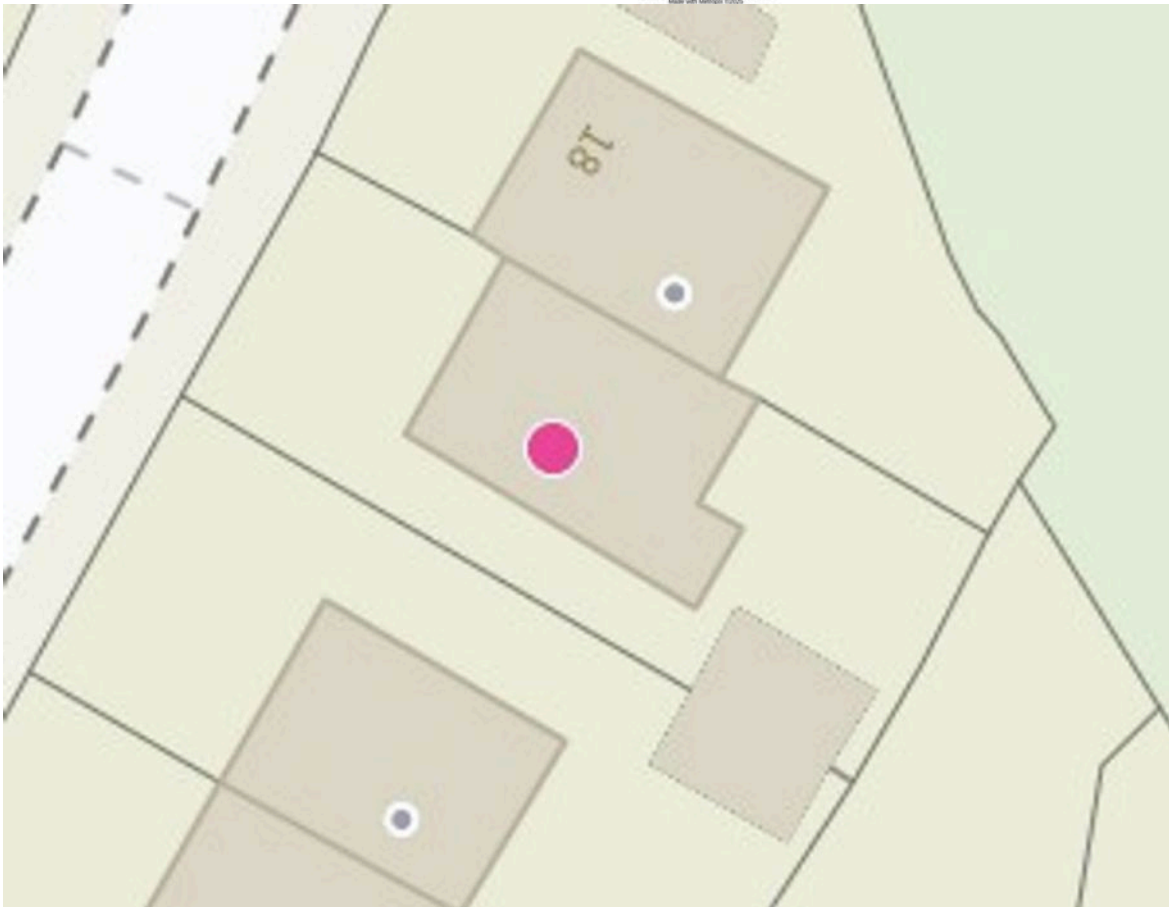
Tenure: Freehold



GROUND FLOOR
888 sq.ft. (82.5 sq.m.) approx.



TOTAL FLOOR AREA: 888 sq.ft. (82.5 sq.m.) approx.
Whilst every attempt has been made to ensure the accuracy of the floorplan contained here, measurements of doors, windows, corners and any other details are approximate and no responsibility is taken for any error, omission or mis-statement. This plan is for illustrative purposes only and should not be used as a basis for any prospective purchase. The services, systems and appliances shown have not been tested and no guarantee is given as to their capacity or efficiency. See the plans.
Made with Memmert 1/1/05



You can include any text here. The text can be modified upon generating your brochure.

01270 445678