



10 Windsor Close, Stone

£230,000 Freehold

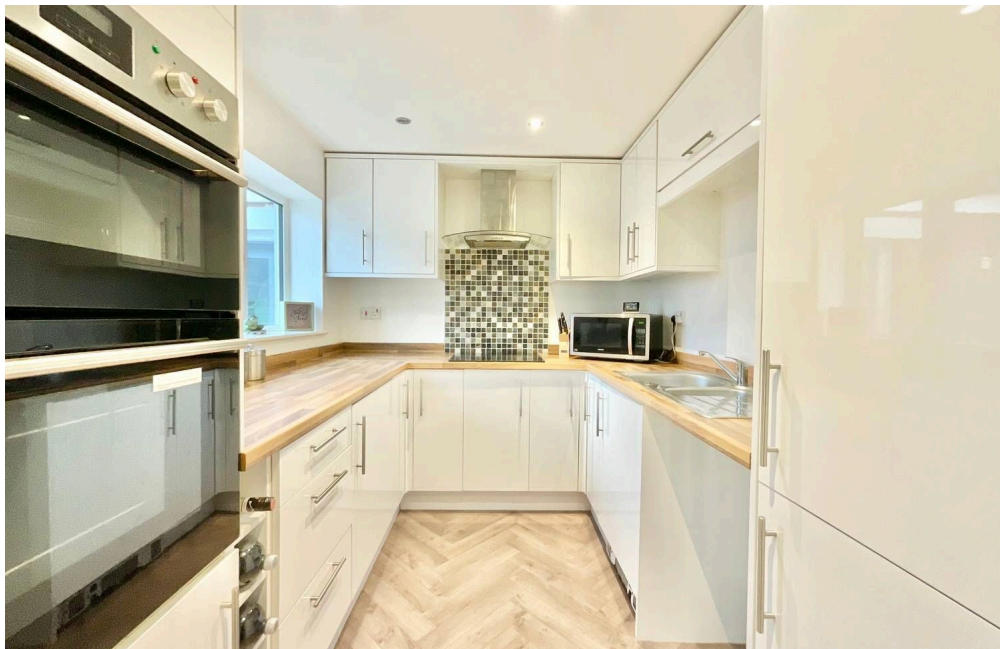


Located in the sought-after area of Walton, this home is nearby Stone's vibrant centre with a variety of shops, bars and restaurants. Commuters will enjoy the nearby road and rail links. • Spacious living room, conservatory and practical u-shape kitchen with sleek cabinets, an integrated fridge/freezer and space for more kitchen essentials.

• Two double bedrooms, along with a well-appointed family bathroom with a bath/shower duo, a wash-hand basin and W/C. • Stunning landscaped rear garden with large feature pond, patio seating space and an artificial lawn. • Driveway offering off-road parking, leading to a single garage.



While you may not find the Kings guard standing in your back garden, this charming two-bedroom semi-detached bungalow on Windsor Close has the charm to make you feel like royalty every day. Step inside, and the entrance hall leads you to each corner of this home. The spacious living room is the heart of the home and provides easy access to the rest of the property. The kitchen is set in a practical u-shape and features sleek cabinetry, an integrated fridge/freezer and oven, and plenty of room to prepare your culinary masterpieces. The versatile conservatory is a real bonus. Whether you envision it as another living space, a hobby room, or a cosy reading nook, it's a space that can adapt to your needs. The bungalow boasts two generously sized double bedrooms, along with a well-appointed family bathroom featuring a bath/shower duo, a wash-hand basin and W/C. Step outside to your personal palace grounds, where a beautifully landscaped garden awaits. A stunning feature pond, patio seating space and an artificial lawn ensures minimal maintenance. The driveway offers off-road parking and leads to a single garage. Located in the desirable area of Walton, just being a stroll away from local shops and just a short drive from Stone's vibrant town centre, offering a variety of shops, bars and restaurants. With excellent transport links by road and rail, getting around is a breeze. This is your chance to reign over Windsor Close and see why this home is truly fit for royalty!



Charming 2-bed bungalow on Windsor Close. Spacious living room, u-shaped kitchen, versatile conservatory. Generous bedrooms, stunning garden with pond. Desirable location near Stone town centre.

Council Tax band: C

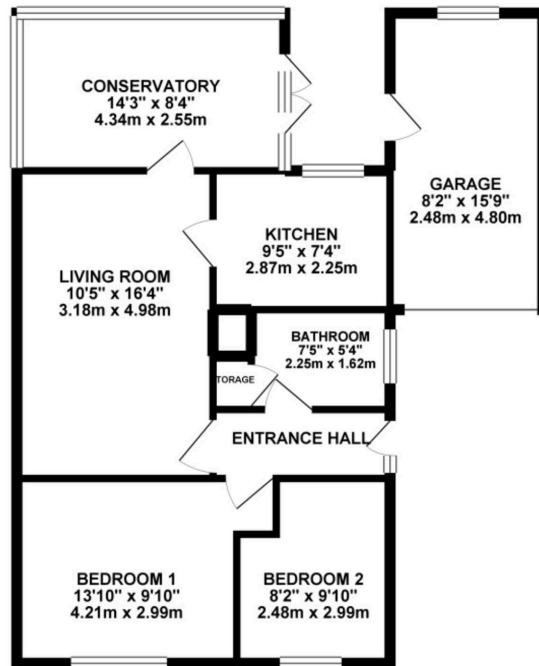
Tenure: Freehold

EPC Energy Efficiency Rating: D

EPC Environmental Impact Rating: D



GROUND FLOOR 760.72 sq. ft.
(70.67 sq. m.)



TOTAL FLOOR AREA: 760.72 sq. ft. (70.67 sq. m.) approx.
While every attempt has been made to ensure the accuracy of the floorplan contained here, measurements of doors, windows, rooms and any other items are approximate and no responsibility is taken for any error, omission or misstatement. This plan is for illustrative purposes only and should be used as such by any prospective purchaser. The services, systems and appliances shown have not been tested and no guarantee is given for their operability or efficiency will be given.
Made with Metamax EDC3



You can include any text here. The text can be modified upon generating your brochure.

01785 814917