



## 27 Kent Grove, Stone

£160,000 Leasehold



Beautiful home on Kent Grove being offered for sale with NO UPWARD CHAIN! • This home is perfectly located nearby excellent schools and within walking distance to Stone's bustling centre with shops, supermarkets and eateries. Commuters have nearby road and rail links. • This property offers two double bedrooms plus a further single, along with a spacious family bathroom offering a bath/shower duo, sink, and W/C. • Bright and airy, open-plan living/dining room, practical U-shape kitchen, separate utility, two outbuildings and a spacious entry hall. • The rear garden is spacious and offers patio seating space and a lush grass lawn, while the front offers mature shrubbery leading up to the front door.



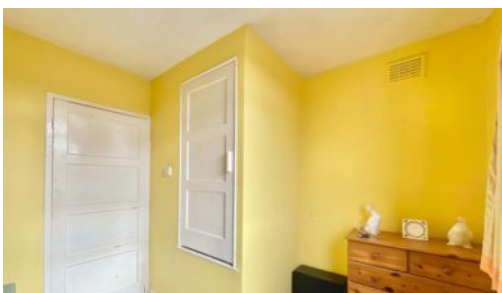
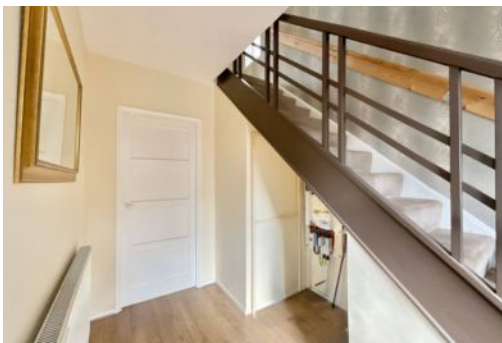
Welcome to a home that's truly what dreams are made of! Hey now, hey now, you've just found the perfect place to call your own. With charm, style, and plenty of space, this property is ready to make all your homeownership dreams come true. Let's take a tour and see if it hits all the right notes. Enter the home and be directed into a beautiful open-plan living/dining room with space for the whole family and a bright window that floods the room with natural light. The kitchen is set in a practical U-shape with ample cabinetry, space for appliances, and access into a handy storage cupboard. Continue, and you'll find the separate utility room and two outbuildings. Upstairs, you will find two generous double bedrooms, plus a further single with its own storage space. The family bathroom features a bath/shower duo, a sink, and a W.C. The first floor is complete with another storage cupboard. Outside, you'll find a generous rear garden with patio seating space and a lush, well-maintained lawn. Perfectly located on Kent Grove, you are nearby excellent schools and within walking distance to Stone's busy town centre, with a variety of shops, supermarkets, eateries, and more. Commuters will appreciate the nearby road and bus links, and Stone train station is within walking distance. As the song goes, *"Hey now, hey now, this is what dreams are made of!"* Could this be your dream home?

Please note that this property is non-standard construction, and mortgage lenders should be advised of this at the outset.

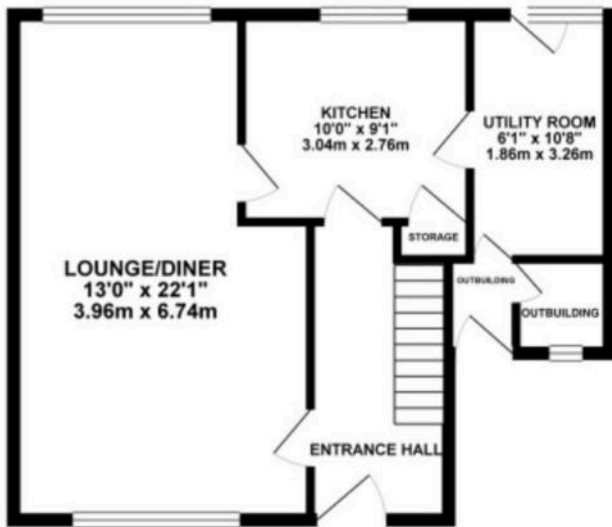


Hey now, hey now, this is what dreams are made of! They're made of 3 bedrooms, open-plan living/dining room, U-shaped kitchen, separate utility, outbuildings, family bathroom and a stunning rear garden with a lush grass lawn. Nearby schools, amenities and travel links! Council Tax band: A

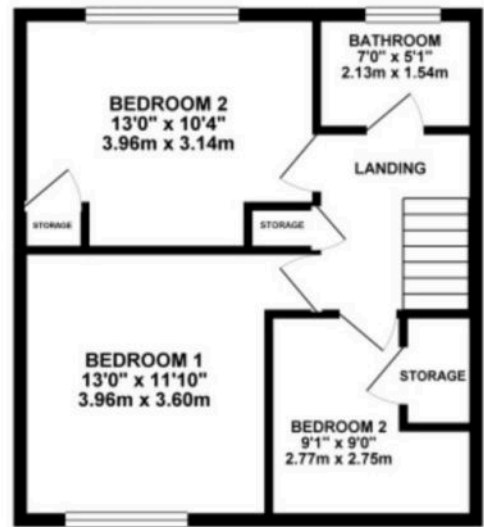
Tenure: Leasehold



GROUND FLOOR 525.06 sq. ft.  
(48.78 sq. m.)

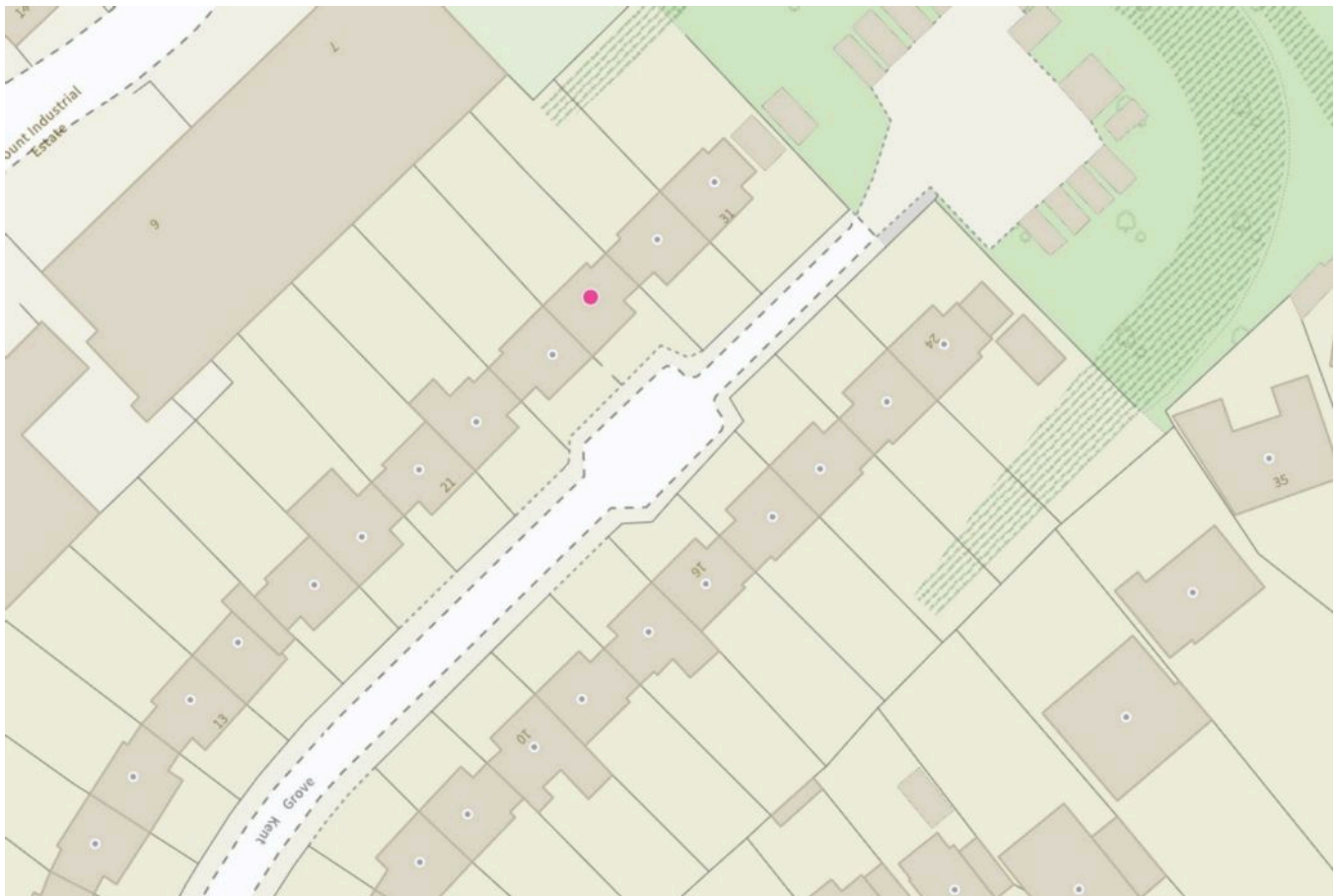


1ST FLOOR 441.41 sq. ft.  
(41.01 sq. m.)



TOTAL FLOOR AREA : 966.47 sq. ft. ( 89.79 sq. m.) approx.

Whilst every attempt has been made to ensure the accuracy of the floorplan contained here, measurements of doors, windows, rooms and any other items are approximate and no responsibility is taken for any error, omission or mis-statement. This plan is for illustrative purposes only and should be used as such by any prospective purchaser. The services, systems and appliances shown have not been tested and no guarantee as to their operability or efficiency can be given.  
Made with Hectagon ©2025



You can include any text here. The text can be modified upon generating your brochure.

01785 814917