



## 6 Tudor Court, Fulford

£195,000 Freehold



A little TLC and creativity will transform this three-bedroom home into something truly special. Perfect for first-time buyers and investors! • A bright living room, open-plan potential in the kitchen/diner, and a conservatory to adapt to your needs. • A versatile third bedroom that can be your office, dressing room or nursery... the choice is yours! • A garden with far-reaching countryside views, plus a garage and off-road parking. • Positioned in Fulford's semi-rural charm, with great amenities, schools, and commuter links close by.





Calling all first-time buyers, creatives, and investors, this three-bedroom mid-terrace in Fulford is bursting with potential and ready for your vision to take centre stage! With no upward chain, it's a blank canvas waiting for fresh ideas, a stylish refresh, and a touch of personality. Step inside and imagine the possibilities...A spacious living area welcomes you in, bathed in natural light from the bow window, the perfect space to unwind or entertain. Double doors lead through to the kitchen/diner, offering open-plan potential for those who love modern flow and functionality. From here, enjoy views over the rear garden, with a stable door opening to the conservatory, a space ready to be transformed. Upstairs, find two generous double bedrooms plus a versatile third room, an ideal home office, dressing room, or nursery. Whether you're dreaming of sleek modern finishes or cosy rustic charm, this is a home where your creativity can shine. Time to unlock the potential outdoors, set on a quiet street, the property benefits from off-road parking and a single garage, ideal for storage or even a future workshop. The rear garden is ready for transformation, whether you envision a stylish patio, lush lawn, or garden studio, the far-reaching countryside views provide the perfect backdrop. Situated in sought-after Fulford, this home offers a semi-rural feel with modern convenience, local amenities, schools, and commuting links are all within easy reach. If you're ready to put your own stamp on a home, add value and style, and create something truly unique, this is the opportunity you've been waiting for! Call today to arrange a viewing, your design journey starts here!



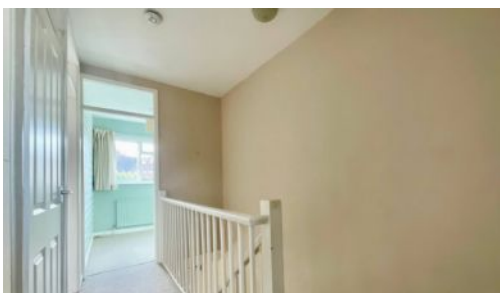


A blank canvas with endless potential...a little creativity, a splash of style, and this Fulford terrace could be your dream home or next smart investment!  
Council Tax band: C

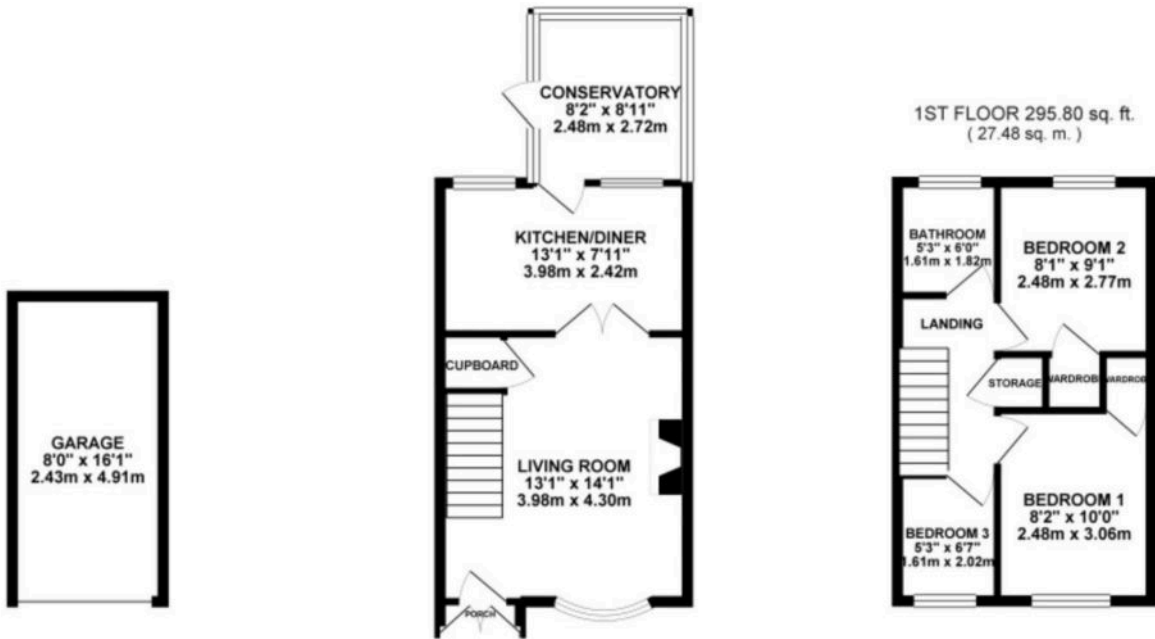
Tenure: Freehold

EPC Energy Efficiency Rating: D

EPC Environmental Impact Rating: D



GROUND FLOOR 498.13 sq. ft.  
( 46.28 sq. m. )



TOTAL FLOOR AREA : 793.94 sq. ft. ( 73.76 sq. m. ) approx.

Whilst every attempt has been made to ensure the accuracy of the floorplan contained here, measurements of doors, windows, rooms and any other items are approximate and no responsibility is taken for any error, omission or mis-statement. This plan is for illustrative purposes only and should be used as such by any prospective purchaser. The services, systems and appliances shown have not been listed and no guarantee as to their operability or efficiency can be given.  
Made with Hologra 6000.



You can include any text here. The text can be modified upon generating your brochure.